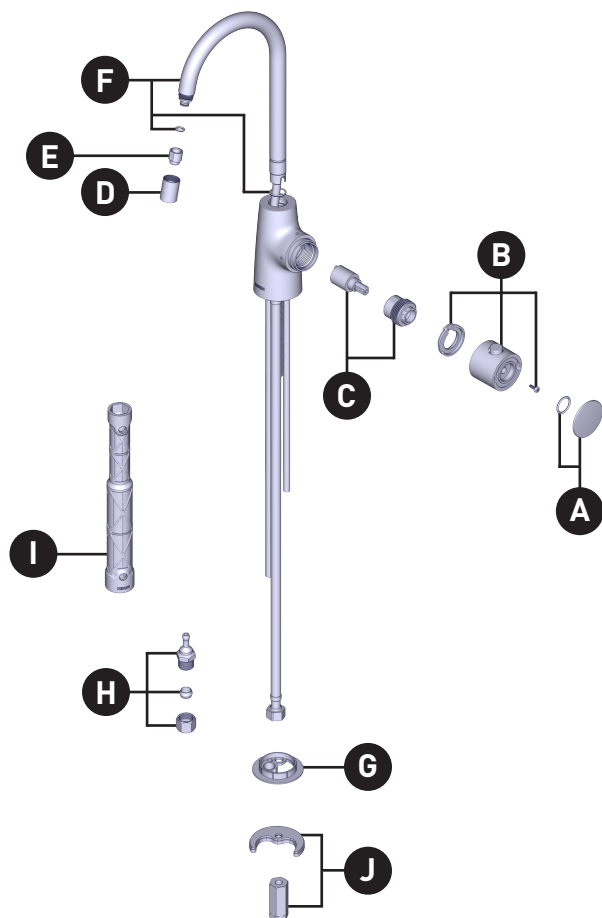


ILLUSTRATED PARTS

SIPT™

IH7620 Series Transitional
Instant Hot Faucet

ORDER BY PART NUMBER



ID	Kit Number	Finish
*A	219601	See Below
*B	219602	See Below
C	219603	N/A
*D	219604	See Below
E	219605	N/A
*F	219606	See Below
G	219607	N/A
H	219608	N/A
I	118305	N/A
J	146190	N/A

NOTE: IH2300 Instant Hot Water Tank
sold separately.

<u>*Finish Determined by Suffix</u>	
<u>Finish</u>	<u>Description</u>
No Suffix	Chrome
BL	Matte Black
BZG	Bronzed Gold
SRS	Spot Resist Stainless