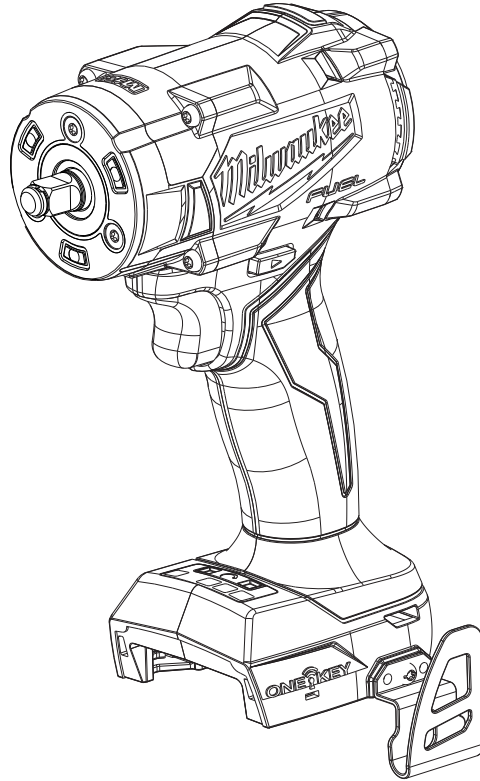




SERVICE PARTS LIST

BULLETIN NO.
54-26-3035

SPECIFY CATALOG NO. AND SERIAL NO. WHEN ORDERING PARTS		REVISED BULLETIN	DATE
M18 FUEL™ 3/8" Friction Ring Controlled Torque Compact Impact Wrench			Nov. 2023
CATALOG NO.	3060-20	SERIAL NO.	M88A
		WIRING INSTRUCTION See Pages 4 & 5	



This product is to be serviced **ONLY** by personnel authorized by MILWAUKEE TOOL. Do **NOT** attempt to purchase parts and install them yourself. Installation by anyone other than an authorized MILWAUKEE personnel could void your warranty.

For service, parts, or inquiries, contact us:

- Customer Service at 1.800.SAWDUST (1.800.729.3878)
- E-Service tool repair at: www.milwaukeetool.com/e-service
- Find a local authorized MILWAUKEE service location at Milwaukeetool.com
- Find a MILWAUKEE *factory* Service Center Location or MILWAUKEE *factory* Central Repair Center at Milwaukeetool.com. Send the following, posted paid and insured:
 - Your name, address, and phone number
 - Description of the issues
 - Copy of the proof of purchase
 - Tool, charger, and batteries involved with the issues

MILWAUKEE factory Central Repair Centers:

MILWAUKEE TOOL
Central Repair
1401 Sycamore Avenue
Greenwood, MS 38930

MILWAUKEE TOOL
Central Repair
2198 Southtech Drive
Greenwood, IN 46143

SERVICE PARTS EXPLODED VIEW

EXAMPLE:
 00 0 Component Parts (Small #)
 Are Included When Ordering
 The Assembly (Large #).

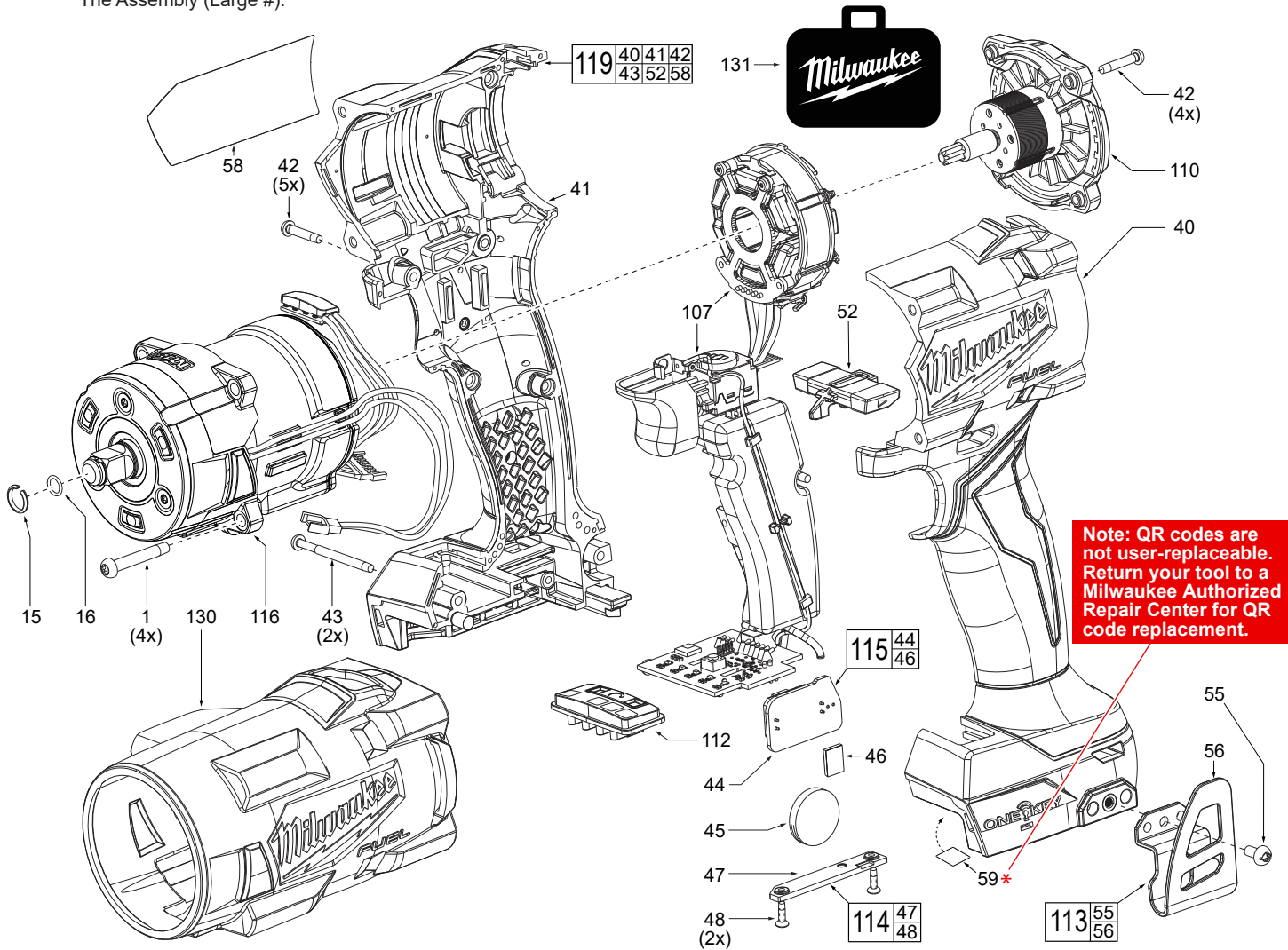


FIG.	PART NO.	DESCRIPTION OF PART	NO. REQ.
1	05-74-7130	M4 x 1.411 Pan Hd. T-20 ST Screw	(4)
15	44-90-1050	Friction Ring	(1)
16	34-40-1885	O-Ring	(1)
40	-----	Right Housing Halve-Cover	(1)
41	-----	Left Housing Halve-Support	(1)
42	06-82-6351	M3 x 1.058 Pan Hd. ST T-10 Screw	(9)
43	06-82-2367	M3 x 1.058 Pan Hd. ST T-10 Screw	(2)
44	22-09-0015	Coin Cell PCBA	(1)
45	-----	Coin Cell Battery	(1)
46	44-52-0006	Foam Pad	(1)
47	-----	Coin Cell Cover	(1)
48	-----	M2.6 PH ST Screw	(2)
52	45-24-9015	Forward/Reverse Shuttle	(1)
55	06-82-2500	6-32 x 7mm Pan Hd. Tapt. T-15 Screw	(1)
56	42-70-5151	Belt Clip	(1)
58	12-20-9880	Service Nameplate	(1)
59	-----	QR Code Label	(1)
107	14-20-9255	Electronics Assembly	(1)
110	16-01-6020	Rotor/Back Cap Assembly	(1)
112	45-24-2860	Speed Selector Assembly	(1)

FIG.	PART NO.	DESCRIPTION OF PART	NO. REQ.
113	42-70-0950	Belt Clip Kit	(1)
114	45-04-7015	Coin Cell Cover Screw Assembly	(1)
115	14-20-9185	Coin Cell PCBA Assembly	(1)
116	14-29-9010	Gearbox Assembly	(1)
119	14-34-7050	Handle Housing Kit	(1)
130	49-16-2858	Rubber Boot (Accessory)	(1)
131	48-53-3060	Blow Molded Carrying Case	(1)

SCREW TORQUE SPECIFICATIONS				
FIG.	PART NO.	WHERE USED	SEAT TORQUE	
			(kgf-cm)	(lbs-in)
1	05-88-1650	Gearcase Assy.	30±2	26±2
42	06-82-6351	Right Housing Halve	11±1	10±1
42	06-82-6351	Rotor/Back Cap Assy.	8±2	7±1
43	06-82-2367	Right Housing Halve	11±1	10±1
48	-----	Cell Cover Screw Assy.	4±.5	3±.4
55	06-82-2500	Belt Clip	16±2	14±2