



## SERVICE PARTS LIST

**BULLETIN NO.**  
**54-07-3610**

SPECIFY CATALOG NO. AND SERIAL NO. WHEN ORDERING PARTS		REVISED BULLETIN	DATE
<b>Dual Slope Rotary Laser RECEIVER</b>			July 2023
<b>CATALOG NO.</b>	<b>3714</b>	<b>STARTING SERIAL NO.</b>	<b>N01A</b>
		WIRING INSTRUCTION	

**EXAMPLE:**  
00 | 0  
Component Parts (Small #)  
Are Included When Ordering  
The Assembly (Large #).

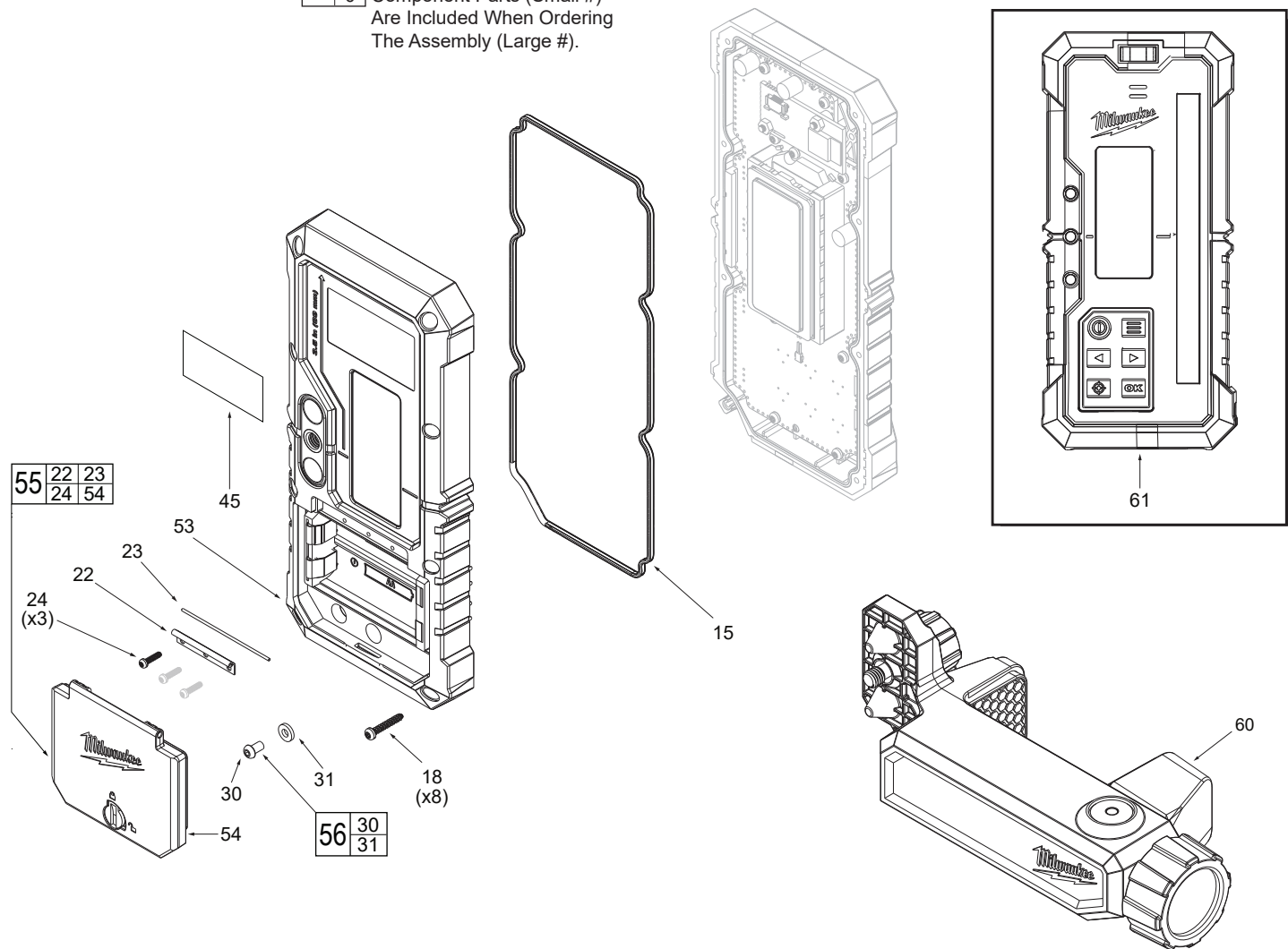


FIG.	PART NO.	DESCRIPTION OF PART	NO. REQ.
15	43-44-0615	Main Gasket/Detector	(1)
18	05-74-0756	M2.5 x 15mm Pan Head T8 Screw	(8)
22	31-21-0048	Power Cell Door Hinge	(1)
23	31-21-0049	Power Cell Door Pin	(1)
24	05-74-0754	M2 x 8mm Pan Head T6 ST Screw	(3)
30	05-74-0761	M3x5mm Pan Head H2 ST Screw	(1)
31	43-44-0613	Leak Test Gasket/ ID=3mm T=1.2mm	(1)
45	12-20-0412	Service Nameplate	(1)
53	31-50-0201	Bottom Housing Assembly/Detector	(1)
54	31-21-0052	Power Cell Door Assembly/Detector	(1)
55	31-21-0051	Power Cell Door Kit/Detector	(1)
56	43-44-0612	Leak Test Gasket Kit	(1)
60	22-38-0106	Rotary Detector Clamp Assembly	(1)
61	3714	Dual Slope Rotary Laser Receiver	(1)

### FIG. NOTES

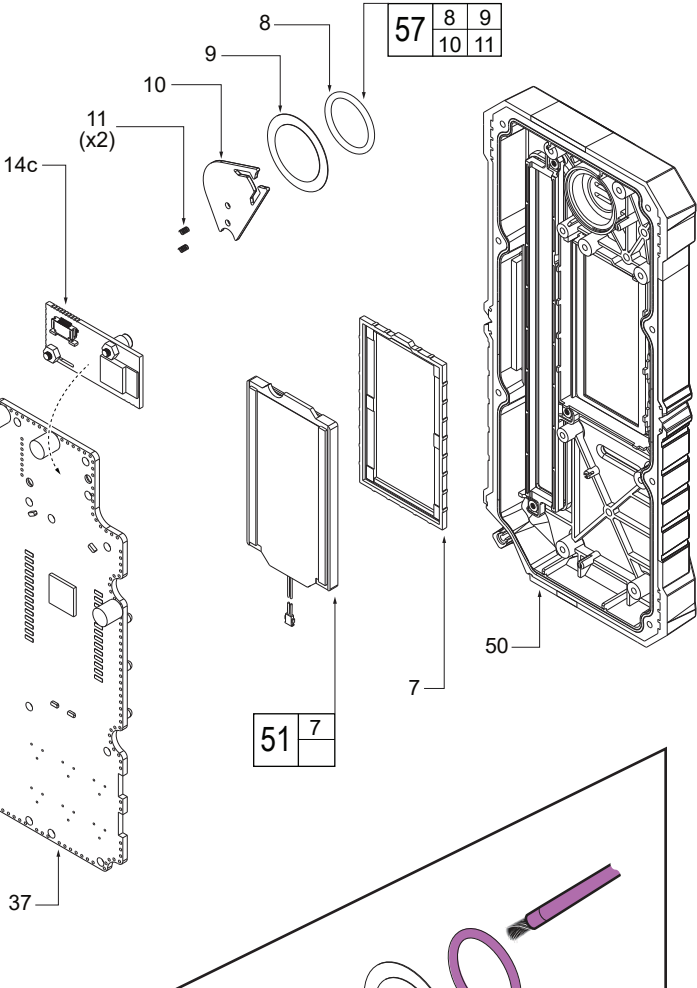
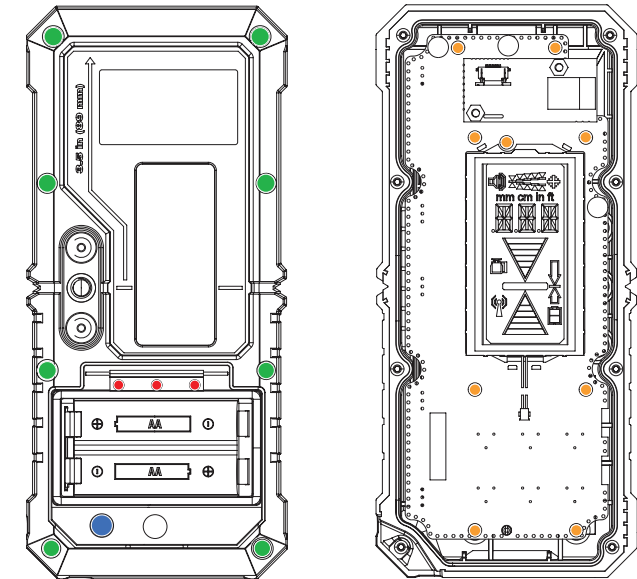
45 A clean, dry surface is essential for proper performance for any adhesive system. The area intended for application of any adhesive label or nameplate must be prepared by cleaning with isopropyl alcohol. The solvent is to be applied with a clean, lint free applicator and the surface allowed to dry before applying the label or name plate.

Service needs pertaining to accuracy or calibration can only be performed at MILWAUKEE TOOL Central Repair:  
1401 Sycamore Ave. Greenwood, MS 38930-7277  
OR  
2198 Southtech Drive Greenwood, IN 46143-6725  
OR Via e-Service at:  
[www.milwaukeetool.com/e-service](http://www.milwaukeetool.com/e-service).  
QUESTIONS: please call 1.800.SAWDUST  
OR  
Return it to a MILWAUKEE FACTORY SERVICE CENTER location, freight prepaid and insured.  
A copy of the proof of purchase should be included with the return product.

FIG.	PART NO.	DESCRIPTION OF PART	NO. REQ.
7	43-44-0616	LED Gasket / Detector	(2)
8	-----	Buzzer O-Ring	(1)
9	-----	Piezo Buzzer	(1)
10	-----	Piezo Buzzer Standoff for MKE detectors	(1)
11	-----	Buzzer Spring	(2)
12	05-74-0543	M2.5 x 8mm Pan Head T-8 Screw	(9)
14c	-----	BLE Module	(1)
37	-----	Main PCBA	(1)
50	31-50-0204	Top Housing Assembly / 3714	(1)
51	44-06-0118	Front LCD Assembly/ Detector	(1)
52	44-06-0119	Rear LCD Assembly / Detector	(1)
57	14-46-0363	Piezo Buzzer Kit	(1)

000

**EXAMPLE:**  
Component Parts (Small #)  
Are Included When Ordering  
The Assembly (Large #).



**LUBRICATION:**  
 = Type "H042" Grease, 50-08-5317

Coat the O-Ring (#8) with a thin layer of grease on all sides of the O-Ring.  
 Check and remove any excess grease from the buzzer cavity walls.

SCREW TORQUE SPECIFICATIONS					
FIG.	PART NO.	DESCRIPTION OF FASTENER	WHERE USED	SEAT TORQUE	
				(kgf-cm)	(lb-in)
	12	05-74-0543	M2.5 x 8mm Pan Head T8 Screw	PCBA and Front Housing	5.0 ± 0.5    4.3 ± 0.4
	18	05-74-0756	M2.5 x 15mm Pan Head T8 Screw	Front and Rear Housings	6.0 ± 0.5    5.2 ± 0.4
	24	05-74-0754	M2 x 8mm Pan Head T6 ST Screw	Rear Housing and Power Cell Door	3.5 ± 0.5    3.0 ± 0.4
	30	05-74-0761	M3 x 5mm Pan Head H2 ST Screw	Rear Housing and Leak Test	4.0 ± 0.5    3.5 ± 0.4