



SERVICE PARTS LIST

BULLETIN NO.
54-07-3605

SPECIFY CATALOG NO. AND SERIAL NO. WHEN ORDERING PARTS		REVISED BULLETIN	DATE
Green Interior Rotary Laser Remote Control & Receiver			July 2023
CATALOG NO.	3712	SERIAL NO.	M98A
WIRING INSTRUCTION			

EXAMPLE:
00 0 Component Parts (Small #)
Are Included When Ordering
The Assembly (Large #).

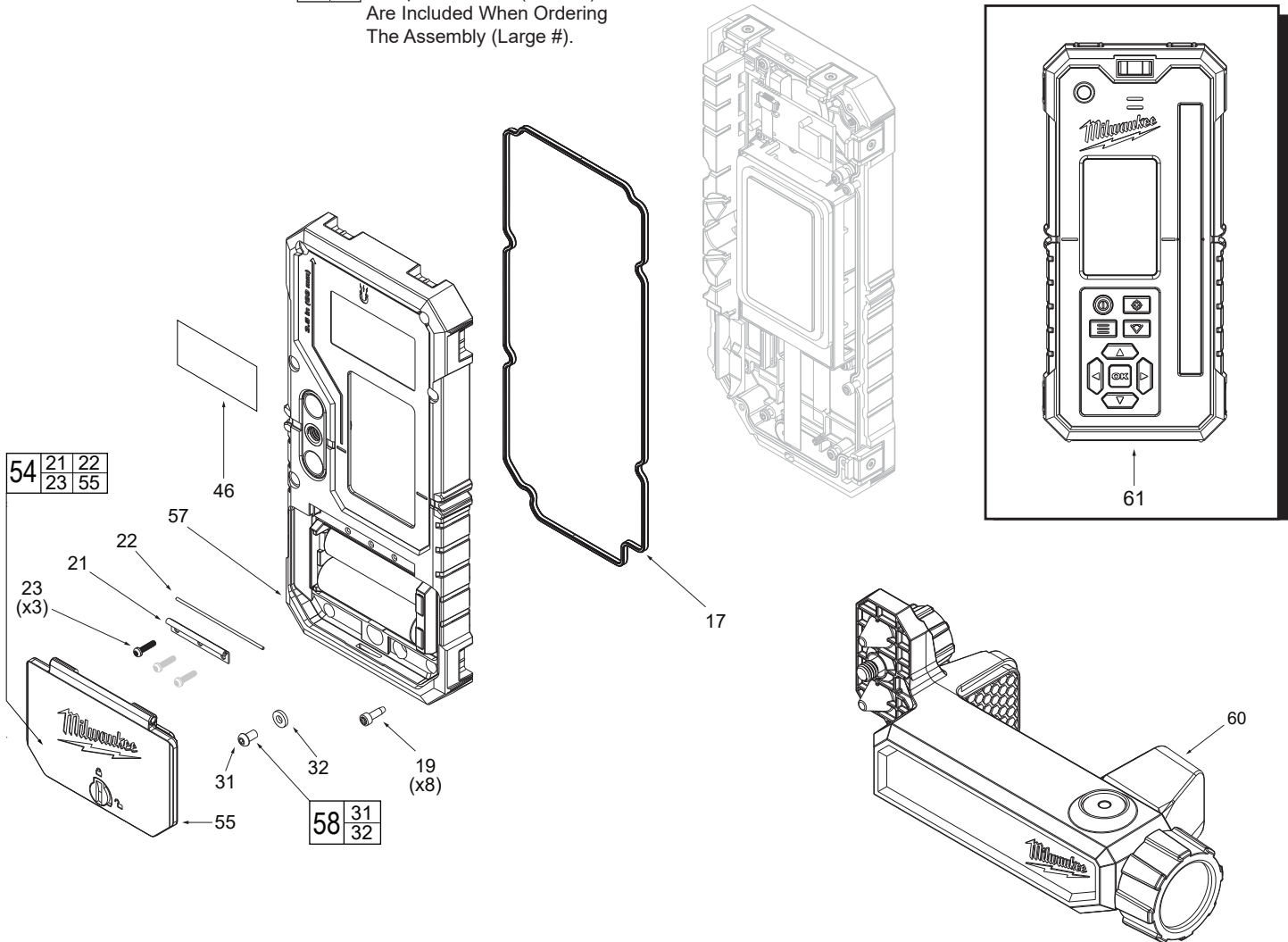


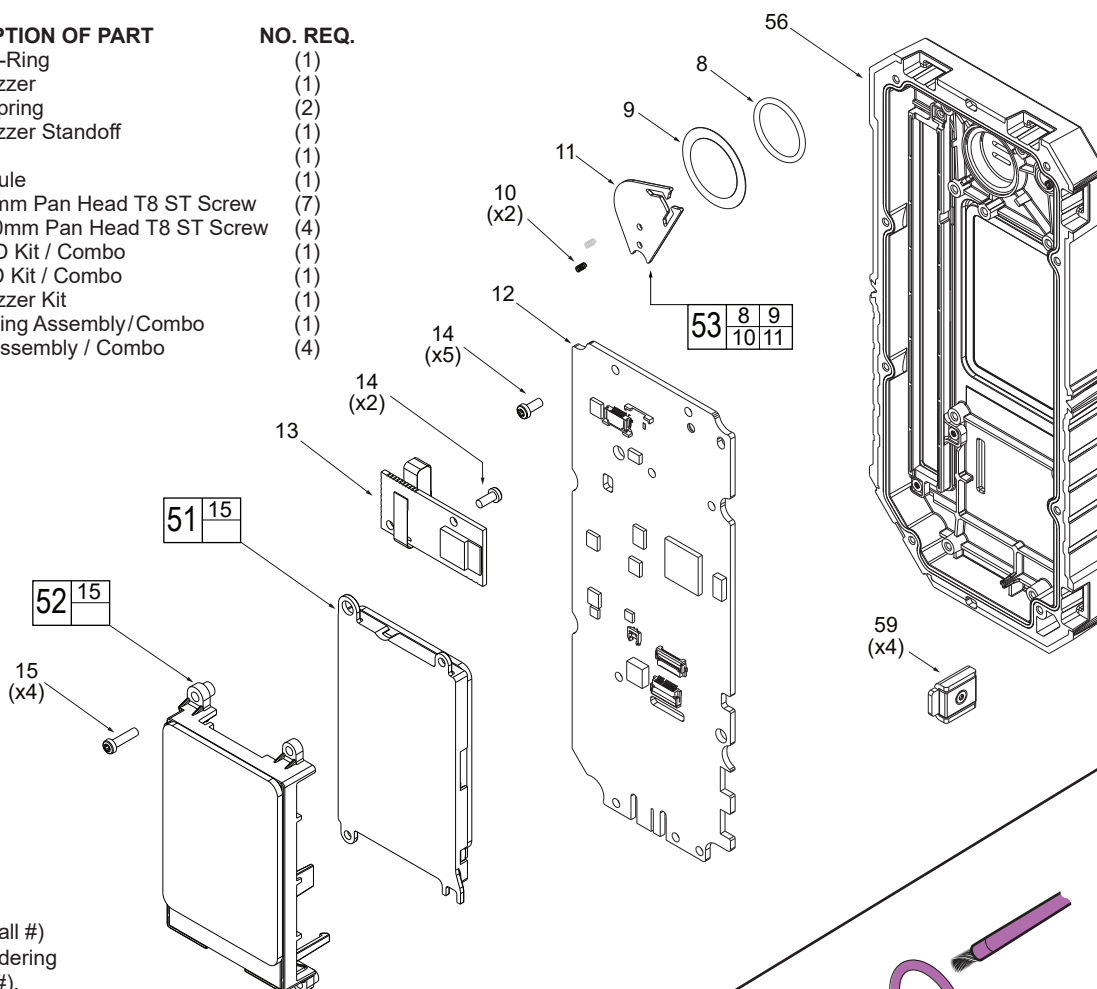
FIG.	PART NO.	DESCRIPTION OF PART	NO. REQ.
17	43-44-0614	Main Gasket/Combo	(1)
19	05-74-0755	M2.5 x 8mm Pan Head T6 Screw	(8)
21	31-21-0048	Power Cell Door Hinge	(1)
22	31-21-0049	Power Cell Door Pin	(1)
23	05-74-0754	M2 x 8mm Pan Head T6 ST Screw	(3)
31	05-74-0761	M3x5mm Pan Head H2 ST Screw	(1)
32	43-44-0613	Leak Test Gasket/ ID=3mm T=1.2mm	(1)
46	12-20-0304	Service Nameplate	(1)
54	31-21-0046	Power Cell Door Kit/Combo	(1)
55	31-21-0047	Power Cell Door Assembly/Combo	(1)
57	31-50-0197	Bottom Housing Assembly/Combo	(1)
58	43-44-0612	Leak Test Gasket Kit	(1)
60	22-38-0106	Rotary Detector Clamp Assembly	(1)
61	3712	1000' Rotary Combo Remote/Detector	(1)

FIG. NOTES

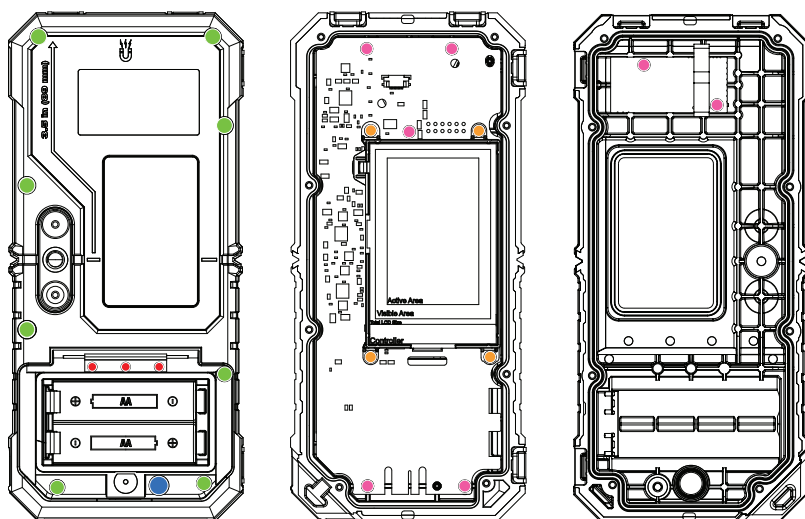
- 46 A clean, dry surface is essential for proper performance for any adhesive system. The area intended for application of any adhesive label or nameplate must be prepared by cleaning with isopropyl alcohol. The solvent is to be applied with a clean, lint free applicator and the surface allowed to dry before applying the label or nameplate.

Service needs pertaining to accuracy or calibration can only be performed at MILWAUKEE TOOL Central Repair:
1401 Sycamore Ave. Greenwood, MS 38930-7277
OR
2198 Southtech Drive Greenwood, IN 46143-6725
OR Via e-Service at:
www.milwaukeetool.com/e-service.
QUESTIONS: please call 1.800.SAWDUST
OR
Return it to a MILWAUKEE FACTORY SERVICE CENTER location, freight prepaid and insured.
A copy of the proof of purchase should be included with the return product.

FIG.	PART NO.	DESCRIPTION OF PART	NO. REQ.
8	-----	Buzzer O-Ring	(1)
9	-----	Piezo Buzzer	(1)
10	-----	Buzzer Spring	(2)
11	-----	Piezo Buzzer Standoff	(1)
12	-----	PCBA	(1)
13	-----	BLE Module	(1)
14	05-74-0762	M2.5 x 6mm Pan Head T8 ST Screw	(7)
15	05-74-0753	M2.5 x 10mm Pan Head T8 ST Screw	(4)
51	44-06-0116	Front LCD Kit / Combo	(1)
52	44-06-0117	Rear LCD Kit / Combo	(1)
53	14-46-0363	Piezo Buzzer Kit	(1)
56	31-50-0196	Top Housing Assembly/Combo	(1)
59	23-27-0015	Magnet Assembly / Combo	(4)

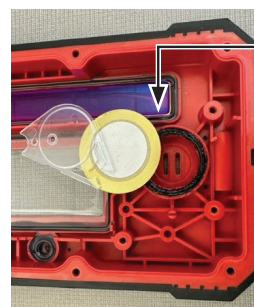


EXAMPLE:
 Component Parts (Small #)
 Are Included When Ordering
 The Assembly (Large #).



LUBRICATION:

● = Type "H042" Grease, 50-08-5317



Coat the O-Ring (#8) with a thin layer of grease on all sides of the O-Ring. Check and remove any excess grease from the buzzer cavity walls.

NOTE: The picture to the left may not represent the tool above, but the lubrication instruction is still valid.

SCREW TORQUE SPECIFICATIONS

FIG.	PART NO.	DESCRIPTION OF FASTENER	WHERE USED	SEAT TORQUE	
				(kgf-cm)	(lb-in)
14	05-74-0762	M2.5 x 6mm Pan Head T8 ST Screw	PCBA and Front Housing; BLE Module	4.0 ± 0.5	3.5 ± 0.4
15	05-74-0753	M2.5 x 10mm Pan Head T8 ST Screw	LCD Holders and Front Housing	4.0 ± 0.5	3.5 ± 0.4
19	05-74-0755	M2.5 x 8mm Pan Head T6 Screw	Front and Rear Housings	5.0 ± 0.5	4.3 ± 0.4
23	05-74-0754	M2 x 8mm Pan Head T6 ST Screw	Rear Housing and Power Cell Door	3.5 ± 0.5	3.0 ± 0.4
31	05-74-0761	M3 x 5mm Pan Head H2 ST Screw	Rear Housing	4.0 ± 0.5	3.5 ± 0.4