

Aquastat Controllers

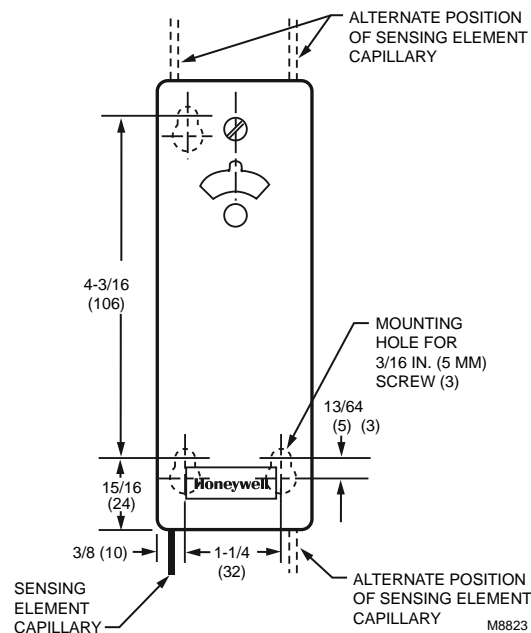
L4008; L6008 Remote Bulb Controller



Aquastat® Controllers are immersion type devices for limiting or regulating the temperature of liquids in boilers, storage tanks, and other applications where temperature control is required.

- Remote temperature sensing element detects and responds rapidly to temperature changes.
- Totally enclosed Micro Switch® snap-acting switch.
- Visible control point scale and external adjustment screw permit easy setting.
- Horizontal or vertical mounting of the remote element into boiler, tank, or other container.
- Case mounts to a vertical surface.

Dimensions in inches (millimeters)



Case Dimensions: 5 5/8 in. high x 2 in. wide x 2 1/8 in. deep
(143 mm high x 51 mm wide x 54 mm deep)

Bulb Size: 3/8 in. x 2 7/8 in. (10 mm x 73 mm) copper

Mounting: Horizontal or Vertical

Maximum Ambient Temperature: 150 F (66 C)

Electrical Ratings

Full Load: 8A @ 120 Vac; 5.1A @ 240 Vac

Locked Rotor: 48A @ 120 Vac; 30.6A @ 240 Vac

Millivolt: 0.25 A @ 0.25 to 12 Vdc

Approvals:

Canadian Standards Association: Certified: File No. LR95329-1

Underwriters Laboratories, Inc. UL Component Recognized: File No. MP466, Vol. 6, Sec.1, Guide No. MBPR2

Product Number	Application	Operating Temperature Range		Differential Temperature		Capillary Length (inch)	Switching Action	Includes
		(F)	(C)	(F)	(C)			
L4008A1015	High or Low limit	100 F to 240 F	38 C to 116 C	5 F to 30 F adj.	3 C to 17 C adj.	66 in.	SPST, contacts break on temperature rise.	5 1/2 ft (1.7 m) capillary
L4008A1130	High or Low limit	130 F to 270 F	54 C to 132 C	5 F to 30 F adj.	3 C to 17 C adj.	120 in.	SPST, contacts break on temperature rise.	Stop factory-set at 200 F (93 C); 10 ft (3.04 m) capillary
L4008B1013	Circulator	100 F to 240 F	38 C to 116 C	5 F to 30 F adj.	3 C to 17 C adj.	66 in.	SPST, contacts make on temperature rise.	5 1/2 ft (1.7 m) capillary
* L4008E1156	High Limit; Manual Reset	130 F to 270 F	54 C to 132 C	Manual Reset	Manual Reset	66 in.	SPST, contacts break on temperature rise.	5 1/2 ft (1.7 m) capillary; Stop factory-set at 250 F (121 C); Heat-conductive compound
* L4008E1305	High Limit; Manual Reset	100 F to 240 F	38 C to 116 C	Manual Reset	Manual Reset	66 in.	SPST, contacts break on temperature rise.	Stop factory-set at 240 F (116 C)
L4008E1313	High Limit; Manual Reset	100 F to 200 F	38 C to 116 C	Manual Reset	Manual Reset	66 in.	SPST, contacts break on temperature rise.	—
* L6008A1192	Circulator Control and Low Limit	100 F to 240 F	38 C to 116 C	5 F to 30 F adj.	3 C to 17 C adj.	—	SPDT	66 in. capillary; Stop factory-set at 240 F (116 C)
L6008A1242	Circulator Control and Low Limit	100 F to 200 F	38 C to 93 C	5 F to 30 F adj.	3 C to 17 C adj.	—	SPDT	66 in. capillary

* TRADELINE models • SUPER TRADELINE models