

# V-BELTS



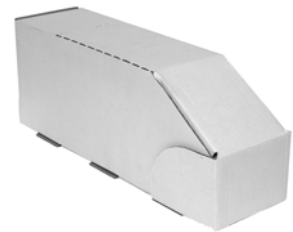
# PRECISION ENGINEERED V-BELTS



- Standard "Type A" High Quality
- For Fractional Horsepower Motors
- 1/2" wide x 5/16" thick
- Packaged in sleeves

DIAL P/N	SIZE	REF #	CTN QTY	CTN WT		DIAL P/N	SIZE	REF #	CTN QTY	CTN WT		DIAL P/N	SIZE	REF #	CTN QTY	CTN WT	
▲6520	20"	4L200	5	0.6		▲6553	53"	4L530	5	1.7		▲6578	78"	4L780	5	2.5	
▲6521	21"	4L210	5	0.7		▲6554	54"	4L540	5	1.7		▲6579	79"	4L790	5	2.5	
▲6522	22"	4L220	5	0.7		▲65545	54"	4L540	▲10	3.9		▲6580	80"	4L800	5	2.5	
▲6523	23"	4L230	5	0.7		▲6555	55"	4L550	5	1.7		▲6581	81"	4L810	5	2.5	
▲6524	24"	4L240	5	0.8		▲65555	55"	4L550	▲10	4.2		▲6582	82"	4L820	5	2.5	
▲6525	25"	4L250	5	1.0		▲6556	56"	4L560	5	1.8		▲6583	83"	4L830	5	2.5	
▲6526	26"	4L260	5	0.9		▲65565	56"	4L560	▲10	4.2		▲6584	84"	4L840	5	2.6	
▲6527	27"	4L270	5	0.9		▲6557	57"	4L570	5	1.8		▲6585	85"	4L850	5	2.6	
▲6528	28"	4L280	5	1.0		▲65575	57"	4L570	▲10	4.2		▲6586	86"	4L860	5	2.6	
▲6529	29"	4L290	5	0.9		▲6558	58"	4L580	5	1.8		▲6587	87"	4L870	5	2.7	
▲6530	30"	4L300	5	1.0		▲65585	58"	4L580	▲10	4.3		▲6588	88"	4L880	5	2.8	
▲6531	31"	4L310	5	1.0		▲6559	59"	4L590	5	1.9		▲6589	89"	4L890	5	2.7	
▲6532	32"	4L320	5	1.3		▲65595	59"	4L590	▲10	4.4		▲6590	90"	4L900	5	2.8	
▲6533	33"	4L330	5	1.1		▲6560	60"	4L600	5	1.9		▲6591	91"	4L910	5	2.8	
▲6534	34"	4L340	5	1.1		▲65605	60"	4L600	▲10	4.5		▲6592	92"	4L920	5	2.9	
▲6535	35"	4L350	5	1.1		▲6561	61"	4L610	5	1.9		▲6593	93"	4L930	5	2.9	
▲6536	36"	4L360	5	1.2		▲65615	61"	4L610	▲10	4.5		▲6594	94"	4L940	5	2.9	
▲6537	37"	4L370	5	1.2		▲6562	62"	4L620	5	2.0		▲6595	95"	4L950	5	2.9	
▲6538	38"	4L380	5	1.1		▲65625	62"	4L620	▲10	4.5		▲6596	96"	4L960	5	3.0	
▲6539	39"	4L390	5	1.3		▲6563	63"	4L630	5	2.0		▲6597	97"	4L970	5	3.0	
▲6540	40"	4L400	5	0.3		▲65635	63"	4L630	▲10	4.6		▲6598	98"	4L980	5	3.0	
▲6541	41"	4L410	5	1.4		▲6564	64"	4L640	5	2.0		▲6599	99"	4L990	5	3.0	
▲6542	42"	Heavy Duty	5	1.4		▲6565	65"	4L650	5	2.1		▲6600	100"	4L1000	5	3.1	
▲6543	43"	4L430	5	1.4		▲65655	65"	4L650	▲10	4.6		6500	Measuring Gauge	1	1.0		
▲6544	44"	4L440	5	1.4		▲6566	66"	4L660	5	2.1							
▲65445	44"	4L440	▲10	3.4		▲65665	66"	4L660	▲10	4.7							
▲6545	45"	4L450	5	0.3		▲6567	67"	4L670	5	2.0							
▲65455	45"	4L450	▲10	3.5		▲65675	67"	4L670	▲10	4.8							
▲6546	46"	4L460	5	0.3		▲6568	68"	4L680	5	2.2							
▲65465	46"	4L460	▲10	3.5		▲65685	68"	4L680	▲10	4.9							
▲6547	47"	4L470	5	0.3		▲6569	69"	4L690	5	2.3							
▲65475	47"	4L470	▲10	3.7		▲65695	69"	4L690	▲10	4.9							
▲6548	48"	4L480	5	0.3		▲6570	70"	4L700	5	2.2							
▲6549	49"	4L490	5	0.3		▲6571	71"	4L710	5	2.2							
▲6550	50"	4L500	5	0.3		▲6572	72"	4L720	5	2.2							
▲65505	50"	4L500	▲10	3.5		▲6573	73"	4L730	5	2.3							
▲6551	51"	4L510	5	0.3		▲6574	74"	4L740	5	2.2							
▲6552	52"	4L520	5	0.3		▲6575	75"	4L750	5	2.3							
▲65525	52"	4L520	▲10	3.8		▲6576	76"	4L760	5	2.3							
						▲6577	77"	4L770	5	2.3							

▲ Display Carton with tear-away lid



Tear-Away Display Carton

