

# INSTALLATION INSTRUCTIONS CARE AND MAINTENANCE



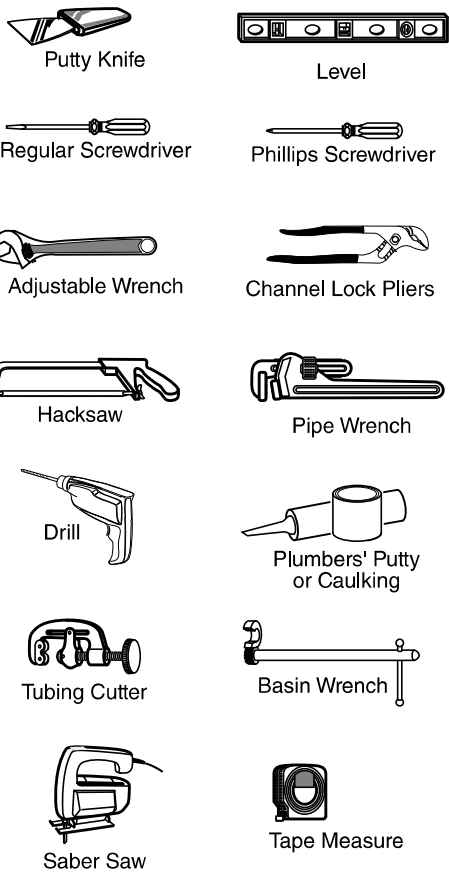
## Studio® S 8725/8726 Series Vanity / Vanity Top

Thank you for selecting American Standard - the benchmark of fine quality for over 100 years. To ensure this product is installed properly, please read these instructions carefully before you begin. (Certain installations may require professional help.) Also be sure your installation conforms to local codes.

**CAUTION: PRODUCT IS FRAGILE. TO AVOID BREAKAGE AND POSSIBLE INJURY HANDLE WITH CARE!**  
NOTE: Pictures may not exactly define contour of china and components.

### OBSERVE LOCAL PLUMBING AND BUILDING CODES

#### Recommended Tools



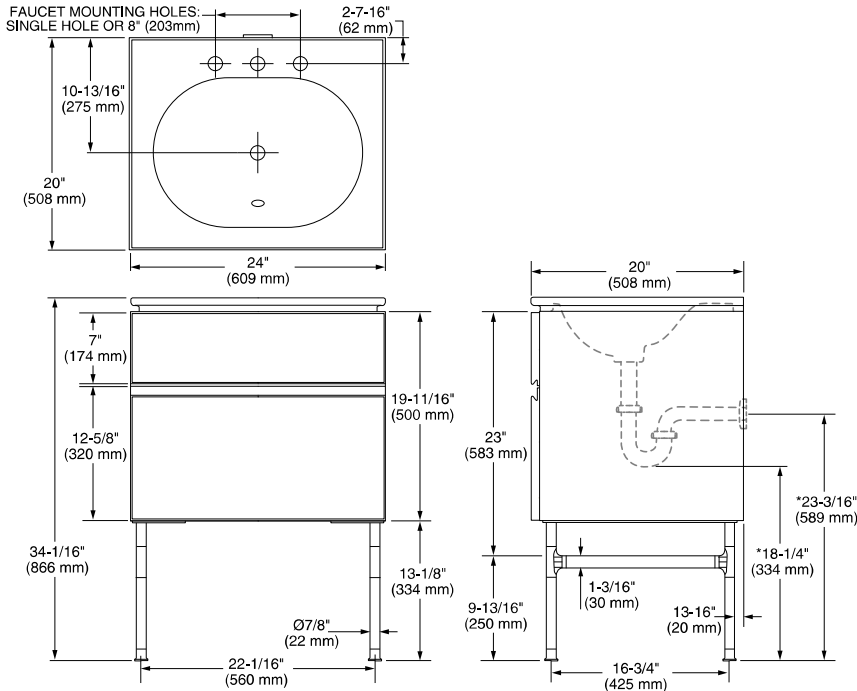
#### Recommended Materials

3 #10 x 2" wood screws

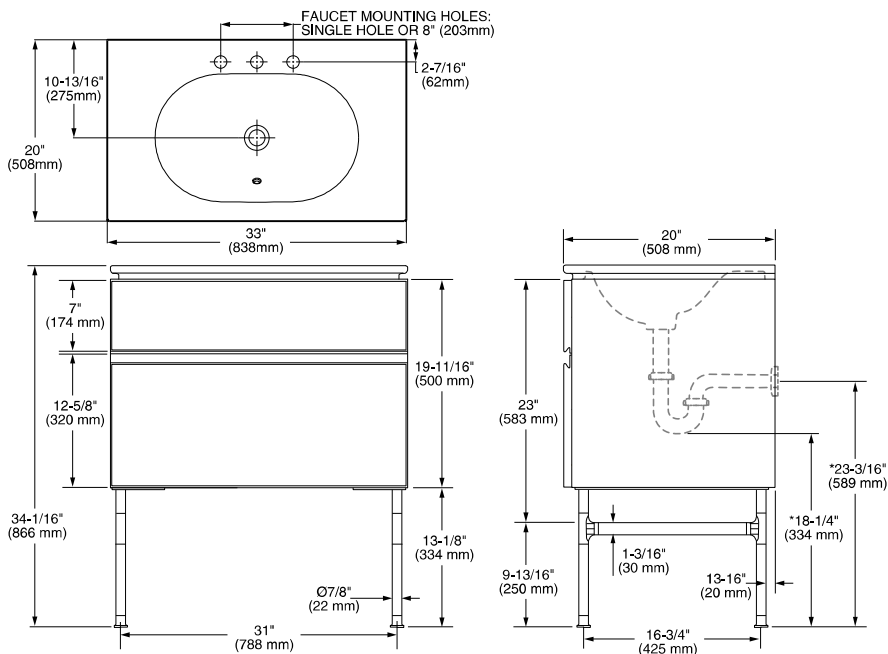
Product names listed herein are trademarks of AS America, Inc.  
© AS America, Inc. 2020



#### Studio® S 24" Single Vanity



#### Studio® S 33" Single Vanity



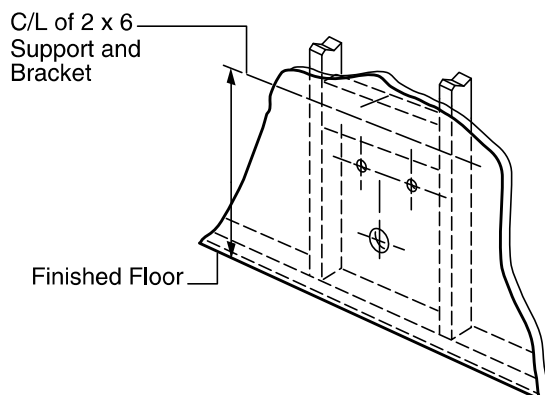
SAVE FOR FUTURE USE

# 1

## Wall Preparation For Vanity Installation

Provide suitable reinforcement behind finished wall for vanities mounting cleat. Vanity must be mounted to a solid wall surface behind the wall.

**Note:** If replacing an existing sink be certain to shut off water supply prior to removing old sink.



# 2

## Removing Vanity Drawers

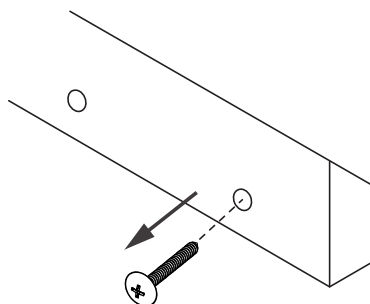
Remove sliding drawers which will allow easier access to installation of vanity by pushing grey plastic tabs outwards releasing from drawer tracks, then gently pull drawer up and out for each drawer.

# 3

## Removing Cleat Screws

Remove screws holding wall mounted cleat to vanity. Also remove cleat from the optional Bridge if being used.

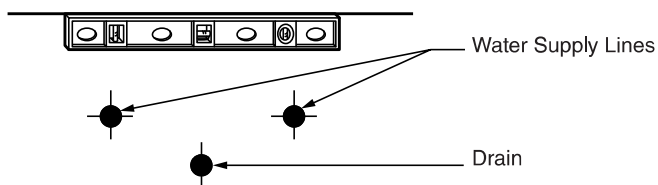
**Note:** If installing optional legs to vanity or optional Bridge, proceed to procedures below for: Installing Optional Legs.



# 4

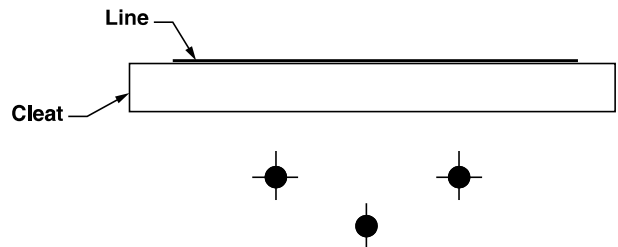
## Mark Wall

Strike a "level line" on wall where top of cleat will be installed. If optional legs are used, ensure placement of cleat accounts for overall height of vanity and legs when assembled together.



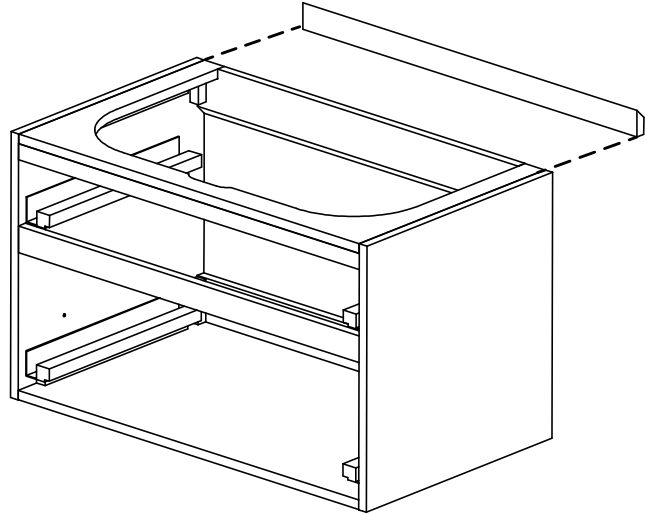
## 5 Installing Vanity Cleat

Place cleat on line, check level and screw in place using 3 #10 x 2" wood screws.



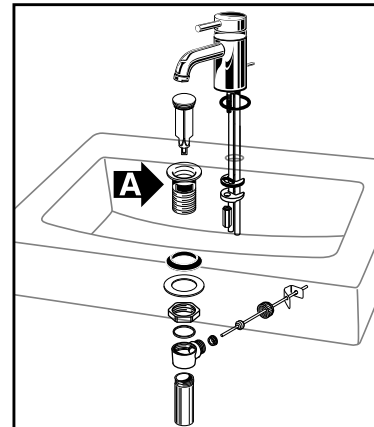
## 6 Installing Vanity Onto Cleat

Place vanity onto cleat on the wall and check for level in two directions, front to back and side to side. Shim as needed to ensure vanity is level.



## 7 Faucet And Drain Installation

Following manufacturer's instructions, install faucet and drain assembly (not included). Apply a bead of sealing putty on the underside of the drain (see detail A) in order to ensure a watertight seal between the sink and the drain. Remove excess putty after installing drain on sink.



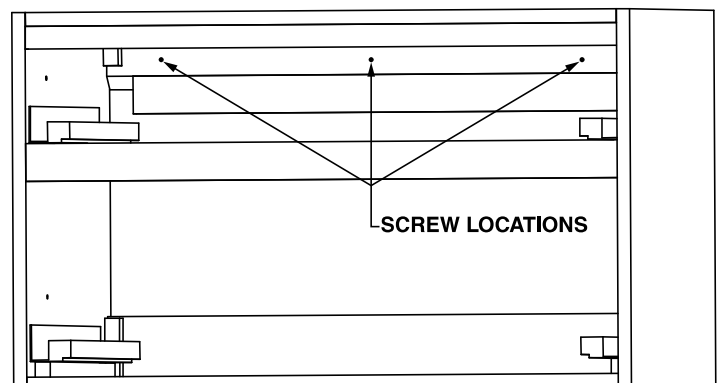
## 8 Attaching Vanity To Wall

Using 3 #10 x 2" wood screws, screw through the back wall of the vanity firmly securing it to the wall. Repeat procedure if using Optional Bridge or second vanity.

**Note:** If installing Optional Wooden Counter Top, proceed to **Step 13 Installing Optional Wooden Counter Top**.

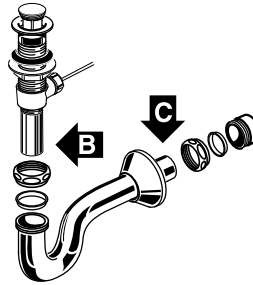
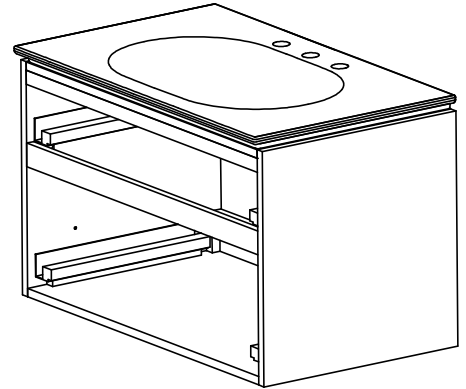
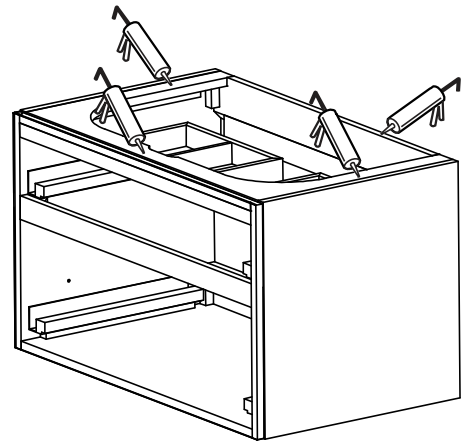
**Note:** If installing Optional Bridge or a second vanity to the bridge, see **Step 11 Connecting Optional Bridge to Vanities**.

FRONT VIEW OF VANITY



## Sink To Vanity Installation

- a) Apply a bead of caulk or adhesive around all 4 sides of the top edge of the vanity where the sink will sit. Refer to Illustration.
- b) Place the sink onto the vanity and carefully over the trap assembly ensuring sink sits evenly (left to right) over the vanity and against the rear wall. See Illustration.
- c) Clean up any adhesive that may run out.
- d) Connect hot and cold supply lines between the fitting valve and the supply shut-off valves.
- e) Connect the trap to the drain assembly and hand-tighten to check alignment. It may be necessary to cut off part of the tailpiece (see detail B) or part of the horizontal leg of the trap (see detail C). See Illustration.
- f) Tighten trap joints for watertight assembly.



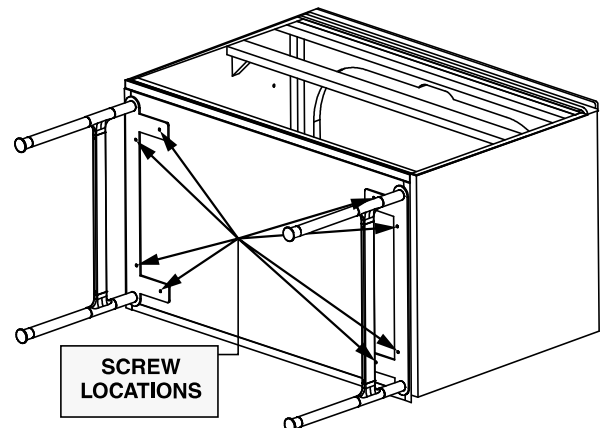
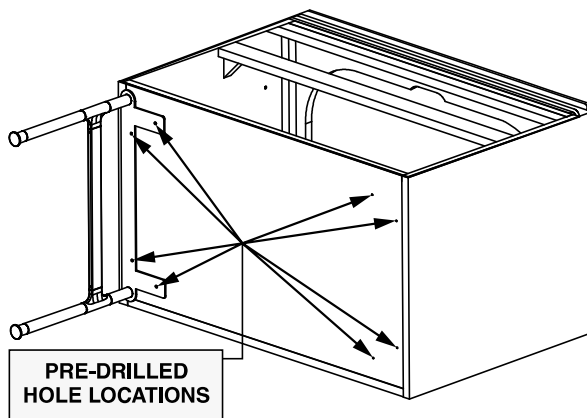
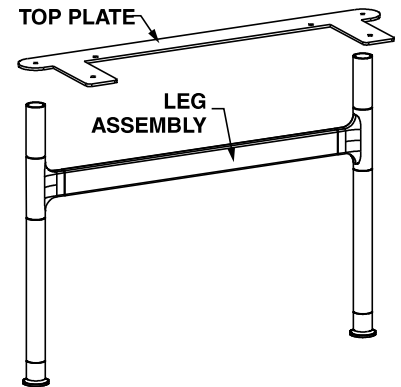
If installing optional bridge to vanities, follow **STEP 11: Connecting Optional Bridge to Vanities**.

## Installing Optional Legs on a Single Vanity

Remove all components from packaging, leg assembly and top plate. Screw top plate to leg assembly using supplied screws.

Lay vanity on its back side on the floor and note pre-drilled hole locations on the bottom/underside of the vanity.

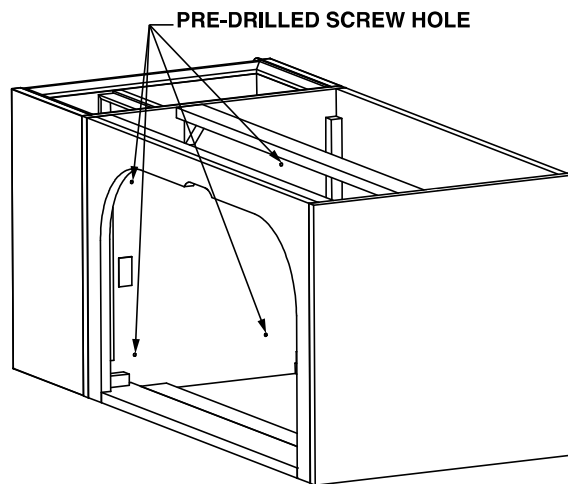
Take leg assembly and line up holes in top plate with holes in vanity and screw leg assembly to vanity with supplied M6 pan head screws. 4 screws required for each leg assembly. Each individual leg can be adjusted for height (up or down) by turning bottom feet clockwise or counterclockwise.



# 11

## Connecting Optional Bridge to Vanities

From inside the vanity there are 4 pre-drill locations, screw into each pre-drill location from the vanity into the bridge using supplied #6 1-1/4" screws connecting bridge to vanity. If a second vanity is being used, install 4 #6 1-1/4" screws into the 4 pre-drilled locations in the second vanity into the bridge.



# 12

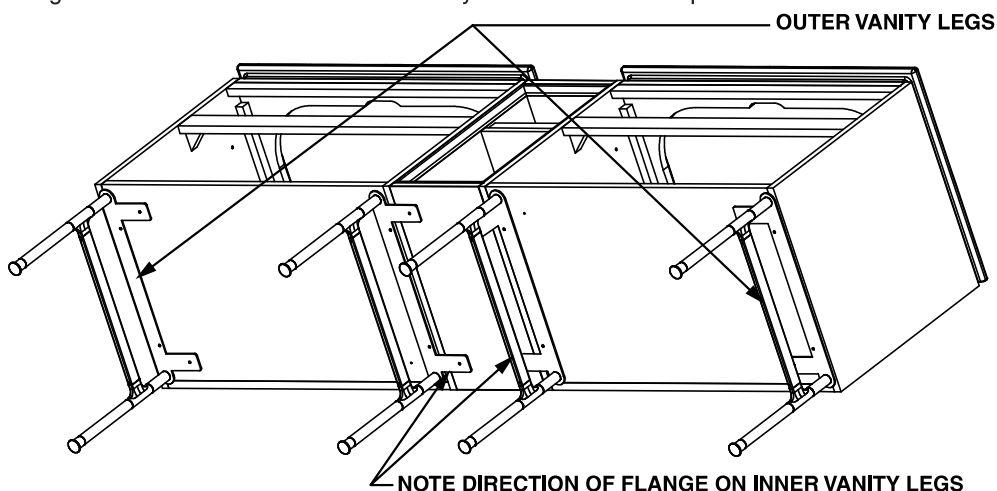
## Installing Optional Legs on Dual Vanity With Bridge

Install the outer vanity legs onto the pre-drilled holes of the vanity using x4, supplied M6 pan head screws as noted in the illustration.

Install the inner set of vanity legs between the opposite side of vanity and one side of the bridge as shown in illustration using the x4 supplied M6 pan head screws. Attach other leg assembly over second vanity and opposite side of bridge in the same manor.

**Note:** 24" double vanities do not require an inner set of vanity legs

**Note:** With all optional legs connected to the vanities and optional bridge, it will be necessary to screw the optional bridge to the vanities in order to secure all 3 pieces together as one piece before mounting onto the cleats on the wall. Follow "Connecting Optional Bridge To Vanities" then continue with vanity installation from Step 6.



# 13

## Installing Optional Wooden Counter Top

- Apply a bead of adhesive around all 4 sides of the top edge of the vanity where the Wooden Counter Top will sit.
- Place the counter top evenly on top of the vanity and clean any adhesive that may run out.
- Attach optional wooden counter top with 4 #6 x 1-1/4" screws supplied. With the drawers removed from the vanity, locate 4 pilot holes in top of unit. Install screws through the 4 pilot holes from the **underside** up into the bottom of the countertop.

