

Combustion Analyzer Comparison



Residential
Commercial
Industrial

PART #	C20	C30	C85	C155	C157	C255	C257	K905	K945	K9206
Max CO Level	2,000 ppm	2,000 ppm	1,000 ppm	4,000 ppm	4,000 ppm	10,000 ppm	10,000 ppm	10,000 ppm	10,000 ppm	10,000 ppm
Flue Temp Max		1112°F	1112°F	2400°F	2400°F	1112°F	1112°F	2200°F	2200°F	2140°F
Pre Programmed Fuels										
Natural Gas	•	•	•	•	•	•	•	•	•	•
Propane	•	•	•	•	•	•	•	•	•	•
Light Oil	•	•	•	•	•	•	•	•	•	•
Wood (pellets)	•	•	•	•	•	•	•	•	•	•
Butane	•		•					•	•	•
LPG	•	•						•	•	•
Heavy Oil	•					•	•	•	•	•
Bio Fuel	•			•	•	•	•			
Coke						•	•	•	•	•
User Selected 1						•	•	•	•	•
User Selected 2						•	•		•	
Kinsale Gas								•	•	•
Gascor								•	•	•
Town Gas								•	•	•
Anthracite								•	•	•
Coal								•	•	•
Natural Gas 2								•		•
User Selected 3										•
User Selected 4										•
User Selected 5										•
Measures/Features										
CO2 = EOS (Electro-Optical Sensor)								Calculated	Calculated	Calculated
O2		Calculated	Calculated	Calculated	Calculated	Calculated	Calculated	•	•	•
CO	•	•	•	•	•	•	•	•	•	•
Temperature (Flue)		•	•	•	•	•	•	•	•	•
Pressure (differential)				•	•	•	•	•	•	Pressure
Ambient CO				•	•	•	•	•	•	•
NO (Lo-range)				Option	•	Option	•	Option	Option	Option
NO (Hi-range)								Option	Option	Option
CO (H2Comp)						•	•	Option	Option	•
CO (Hi-range)								Option	Option	Option
SO2 (Lo-range)								Option	Option	Option
SO2 (Hi-range)								Option	Option	Option
N02								Option	Option	Option
H2S										Option
Warranty	5-Year limited	5-Year limited	5-Year limited	5-Year limited	5-Year limited	5-Year limited	5-Year limited	1-Year limited	1-Year limited	1-Year limited

Indicates analyzers that have installed Carbon Dioxide Electro-Optical Sensor Technology.

Industrial Combustion Analyzer (O2/CO) w/Wireless Handset

K9206 UPC: 05353350729

K9206 is a versatile heavy-duty industrial combustion analyzer. Users can select from pre-defined sensor combinations or customize an order by fitting any combination of up to seven additional sensors. The K9206 is built to test combustion systems over 10,000 MBTU/h with high concentration gas levels for extended durations.

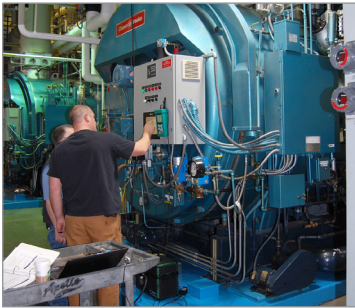


Functions

- Measures: O2, CO, Inlet temperature, Flue temperature, Differential pressure / draft
- Calculates: Efficiency, Carbon dioxide (CO2), Net temperature differential, Losses, Excess air, CO/CO2 ratio, Poison index

Features

- Customizable sensor configurations with up to 7 sensors
- Wireless handset to base or PC
- 24 parameter display
- On board plain paper printer
- Heated manifold to prevent condensation
- Automatic fresh air purge
- Rugged case



Includes

- Analyzer
- Probe
- Charger
- Manual
- Calibration report
- Carrying case

Warranty

1-Year limited warranty



K9206 Sensor Options							
UEI Part Number	K9206	K9206C2	K9206C3	K9206C4	K9206C5	K9206C6	K9206C7
UPC	05353350729	05353350730	05353350731	05353350732	05353350733	05353350734	05353350735
O2 Sensor	X	X	X	X	X	X	X
CO Sensor	X	X	X	X	X	X	X
Pressure	X	X	X	X	X	X	X
Temperature	X	X	X	X	X	X	X
NO		X	X	X		X	X
NO2		X		X			X
SO2			X	X			X
HC/CO%/CO2					X	X	X

COMBUSTION ACCESSORIES



Combustion Meters - Accessories

17631	Particle Filter (C Series Analyzers)	05353360401
17631PACK	Particle Filter (C Series Analyzers) (10pack)	05353360617
D460	Pressure Gauge	05353350522
KMCP70	8" Flue Probe 6' Hose (C30(Smartbellplus))	05353360606
KMCP72	12" Flue Probe 6' Hose (C20)	05353360650
SB00T	Protective Boot (C20/C30(Smartbellplus))	05353360607
SBWT	Water Trap (C20/C30(Smartbellplus))	05353360627
SBWTP	Water Trap Plug (C20/C30(Smartbellplus))	05353360659



Combustion Analyzers - Accessories & Replacement Parts

13124	Compression Ferrule (C Series Analyzers)	05353360640
16646	Thermal Paper for KMIRP2 & IRP2 (2.25"/57mm)	05353360420
16646PACK	Thermal Paper for KMIRP2 & IRP2 (2.25"/57mm)(10pack)	05353360660
AACA4	AC Adapter/Charger (C Series Analyzers)	05353360530
CFK1	Chemical Filter Kit	05353360653
CM11667/2	Water Trap Drain Plug (C Series Analyzers)	05353360535
CM11667/2PACK	Water Trap Drain Plug (C Series Analyzers) (10 pack)	05353360608
EABT	Bluetooth Upgrade - Android™ App	05353360594
EAGLEUPGRADE	Printer, AC Adapter, K-Type Thermocouples, Tubing	05353350616
EAKIT	Printer, AC Adapter, K-Type Thermocouples, Tubing	05353360564
IRP-2	Easy Load Fast Printer - IR Link (COMBUSTION)	05353360691
KMCP2	12" Flue Probe w/ 10' Hose (C Series Analyzers)	05353360492
SGAFP	12" Flue Probe w/6' Hose (C095)	05353360391
SM11103	Inlet Tube	05353360583
SM11827	Water Trap	05353360638
SPT1	Smoke Pump Test Kit	05353360519
WTA	Water Trap Assembly (except C20/C30)	05353360626



K905, K945 - Accessories & Replacement Parts

16345	Particle Filter (KM Series Particle Filter)	05353360306
16486	Battery (KM940/KM900PLUS)	05353360419
AF9	Particle Filter (1 Qty) (KM940/KM900PLUS)	05353360270
KMCP10	12" Flue Probe w/ 10' Hose (KM940, KM900PLUS, K905, K945)	05353360446
KMCSPP6	12" Flue Probe with 15' Hose (KM940, KM900PLUS, K905, K945)	05353360452
KMCU900/110	Charger, Power Adapter (KM940/KM900PLUS)	05353360455
WT900/2	Water Trap (Case Mount) (KM940, KM900PLUS, K905, K945)	05353360526

Factory Upgrades

10533	NO2 Sensor (0 to 1,000 ppm) Factory Install (KM940, KM900PLUS, K905, K945)	05353360584
12933	CO Sensor (0 to 10,000 ppm), H2 Comp Factory Install (KM940, KM900PLUS, K905, K945)	05353360585
13251	NO Sensor (0 to 5,000 ppm) Factory Install (KM940, KM900PLUS, K905, K945)	05353360418
13910	SO2 Sensor (0 to 5,000 ppm) Factory Install (KM940, KM900PLUS, K905, K945)	05353360586
OS12	Sensor, O2 KM900+/KM940 (KM940, KM900PLUS, K905, K945)	05353360464



K9206 - Accessories & Replacement Parts

10051	Probe Shaft 12" 1000°F (K9206)	05353360550
15588	Probe Shaft 36" 1000°F (KM9106/P, K9206)	05353360590
15589	High Temp. Probe Shaft 12" 2000°F (KM9106/P, K9206)	05353360616
15590	High Temp. Probe Shaft 36" 2000°F (KM9106/P, K9206)	05353360591
FB1	Chemical Filter Bypass (KM9106/P, K9206)	05353360431
KHL/Q	Heated Line (K9206)	05353360675
KHSA/Q	Heated Sensor Assembly (K9206)	05353360673
KHP/Q	Optional Heated Probe (K9206)	05353360676
KMAF2	Particle Filter with Housing (KM9106/P, K9206)	05353360438
K9206BCH	Battery Charger w/ US Lead (K9206)	05353360689
SF1	SO2 Filter 1Pkg (KM9106/P, K9206)	05353360478
SF9	Chemical (Sulfur) Filter (K9206)	05353360277
SM10617	Flue Probe Handle and Tubing (KM9106/P, K9206)	05353360551
SM11858	Case Assembly (KM9106/P, K9206)	05353360690
WN8	Water Trap Filter (for WTS9106) (K9206, KM9106/P)	05353360481
WTS9106	Industrial Water Trap (KM9106/P, K9206)	05353360487

Factory Upgrades

KCO1/Q	CO Sensor (K9206)	05353360663
KHC/Q	HC105 Sensor Module (K9206)	05353360670
KHSA/Q	Heated Sensor Assembly (K9206)	05353360673
KN01H/Q	NO Sensor High Range (K9206)	05353360665
KN01L/Q	NO Sensor Low Range (K9206)	05353360664
OS11	Oxygen Sensor (KM9106/P, K9206)	05353360463

Category index

A/C & REFRIGERATION	23-25
ACCESSORIES	30-31
CLAMP-ON METERS	13-16
COMBUSTION	2-12
DIGITAL MULTIMETERS	16
ELECTRICAL TESTERS	26-27
HUMIDITY / AIR FLOW	20-21
INDUSTRIAL ANALYZERS	7-8
INFRARED THERMOMETERS	18-19
INSULATION RESISTANCE TESTERS	26
LEAK DETECTORS	22
PRESSURE TESTERS	23
RECERTIFICATION PRICING	11
TEST LEADS	31
THERMOMETER TESTERS	18
THERMOMETERS	17
UTL	28-29



1-800-547-5740

info@ueitest.com

PORTLAND, OR

Headquarters

INDIANAPOLIS, IN

Recertification Center

ISO/IEC 17025:2005

NIST Certification



1-877-475-0648

infocanada@ueitest.com

VANCOUVER, BC

Recertification Center

ISO/IEC 17025:2005

NIST Certification

Product index

300AC	17	ATL301KIT	31	DL479	14	KMCP72	12
550B	17	ATLBPK	31	DL479COMBO	16	KMCSP16	12
10051	12	ATLTX	31	DL489COMBO	16	KMCU900/110	12
10533	12	ATT6	30	DM393	16	KN01H/Q	12
12933	12	ATT19	30	DMEG3	26	KN01L/Q	12
13124	12	ATT26	30	DMG100	25	NCV3	27
13251	12	ATT27	30	DT302	18	OS11	12
13910	12	ATT29	30	DT304	18	OS12	12
15588	12	ATT29A	30	DTH10	20	PDT550	17
15589	12	ATT29APACK	30	DTH35	20	PDT650	17
15589	12	ATT30	30	DTH880	20	RF60A	17
15590	12	ATT36	30	DTK2	18	RFT2A	17
16345	12	ATT39	30	DTK2KIT	18	RLD10	22
16486	12	ATT50	30	EABT	12	RLD15B	22
16646	12	ATT70	30	EAGLEUPGRADE	12	RLD15SENS	30
16646PACK	12	ATT71	30	EAKIT	12	RLDLS	30
17631	12	ATT100	30	EM152	23	RLDSENS	30
17631PACK	12	ATTTEXT	30	EM201B	23	RS1000	30
AAC	31	ATTPC	30	EM201SPKIT	23	RS1010	30
AAC3	31	ATTPC3	30	ERT100	27	SBOOT	12
AACA4	12	BF100	30	ERT200	27	SBWT	12
AB13	31	BF102	30	FB1	12	SBWTP	12
AB15	31	C20	6	FG80K	17	SF1	12
AC12	31	C20KIT	6	HA1	23	SF9	12
AC73	31	C50	6	INF165C	19	SGAFP	12
AC319	31	C50/OILKIT	6	INF195C	19	SM10617	12
AC504	31	C85	3	INF225	18	SM11103	12
AC509	31	C85KIT	3	IR P-2	12	SM11827	12
AC519	31	C155	4	IRT3	26	SM11858	12
ACF1	30	C155BTKIT	4	IRT20	26	SPAKIT	23
ACS1	30	C155KIT	4	K905	8	SPT1	12
AF10	31	C155OILKIT	4	K905CON	8	SSM1	23
AF113	31	C157	4	K905CONOX	8	T125/3	17
AF120	31	C157BTKIT	4	K905CONS	8	T160	17
AF125	31	C157KIT	4	K905COS	8	T160/3	17
AF145	31	C157OILKIT	4	K945	8	T220	17
AF155	31	C255	5	K945CO%	8	T220/3	17
AF160	31	C255KIT	5	K945CON	8	TACH2	26
AF2	31	C257	5	K945CONOX	8	TC70	17
AF3	31	C257KIT	5	K945CONS	8	TC100	17
AF5	31	CD100A	22	K945COS	8	TF100	30
AF9	12	CD200	22	K9206	7	THL2	20
AF21	31	CFK1	12	K9206BCH	12	UTL261	28
AF23	31	CLM100	26	K9206C2	7	UTL291	28
AF38	31	CM11667/2	12	K9206C3	7	UTL33T	29
AF39	31	CM11667/2PACK	12	K9206C4	7	UTLC11	29
AF45	31	CO71A	10	K9206C5	7	UTLCD1	29
AK940	24	CO95	10	K9206C6	7	UTLDM1	28
AQM4	20	CO95KIT	10	K9206C7	7	UTLDM2	28
ASP1	30	COA1	9	KCO1/Q	12	UTLIR1	29
ATHA1	30	COBG	10	KHC/Q	12	UTLIR2	29
ATL1	31	D460	12	KHL/Q	12	WN8	12
ATL2	31	DAFM3B	21	KHP/Q	12	WRS110	25
ATL3	31	DAFM4	21	KHSA/Q	12	WRS220	25
ATL5	31	DL389	16	KMAF2	12	WT900/2	12
ATL6	31	DL419	16	KMCP2	12	WTA	12
ATL55	31	DL429	15	KMCP10	12	WTS9106	12
ATL57	31	DL469	14	KMCP70	12		

WWW.UEITEST.COM

