

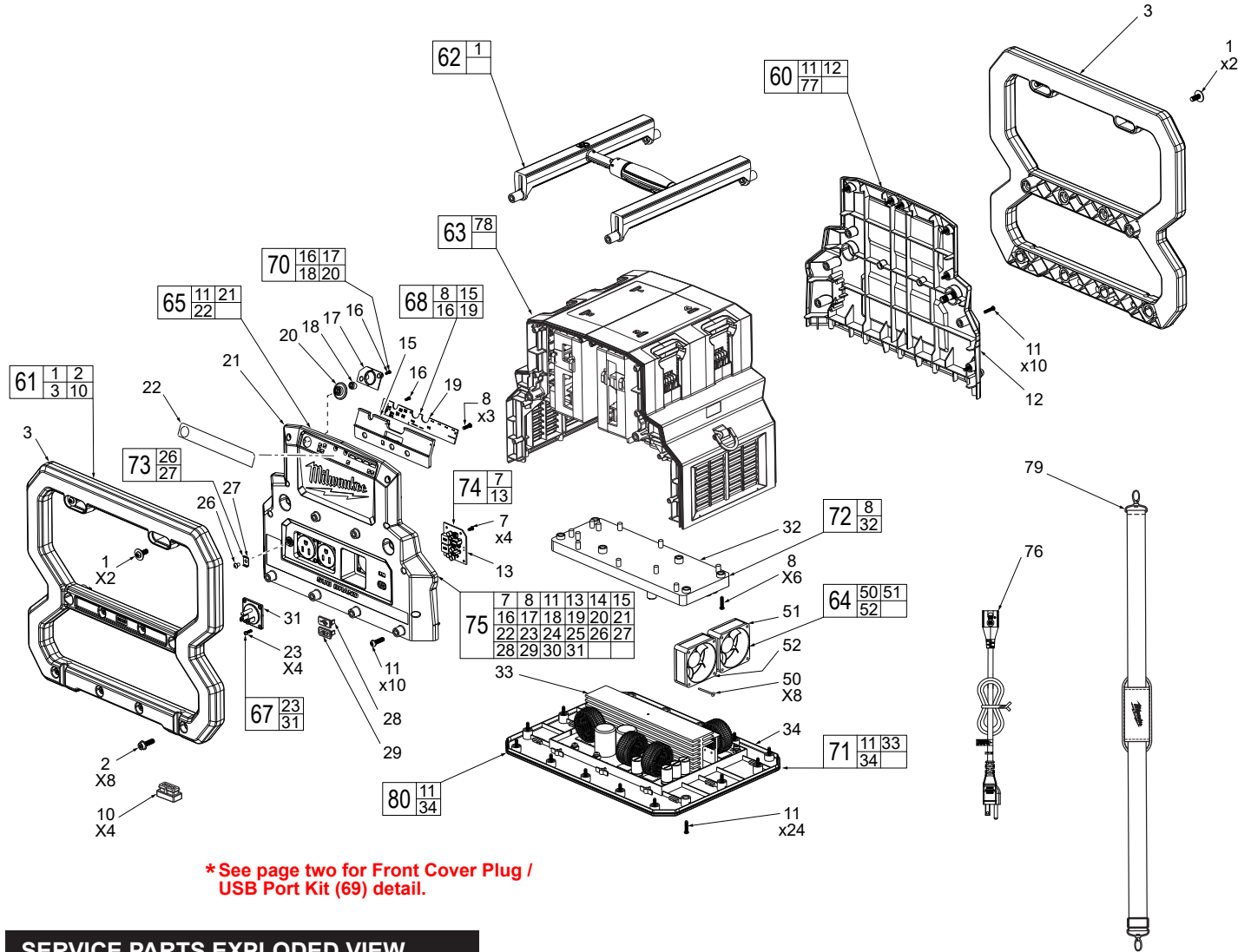


# SERVICE PARTS LIST

**BULLETIN NO.**  
**54-07-2845**

SPECIFY CATALOG NO. AND SERIAL NO. WHEN ORDERING PARTS		REVISED BULLETIN	DATE
<b>M18™ CARRY-ON Power Supply</b>			Oct. 2022
<b>CATALOG NO.</b>	<b>2845-20</b>	<b>STARTING SERIAL NO.</b>	<b>M30A</b>
			<b>WIRING INSTRUCTION</b> <b>Pages 3 thru 4</b>

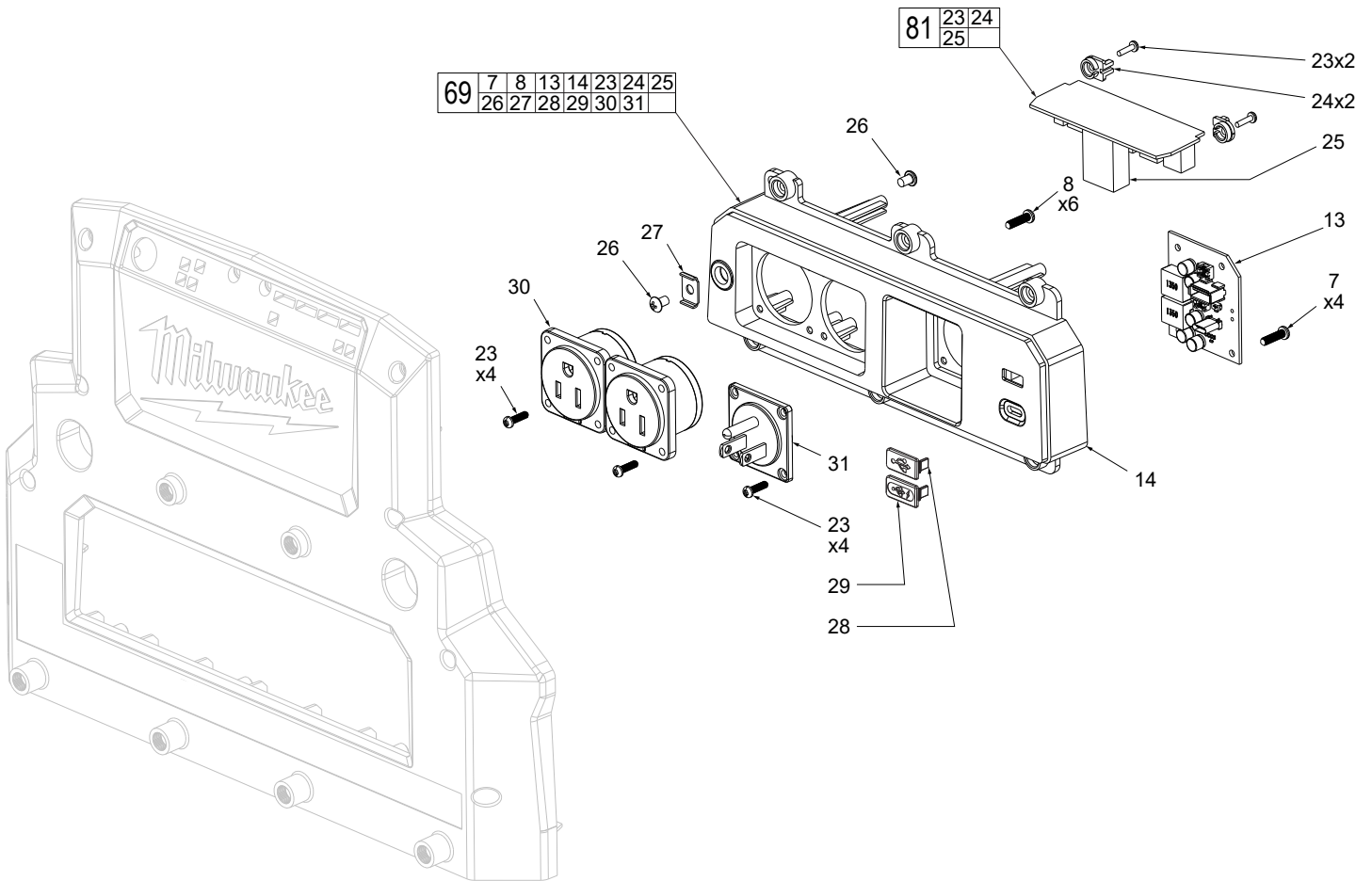
**EXAMPLE:**  
Component Parts (Small #) Are Included  
When Ordering The Assembly (Large #).



**\* See page two for Front Cover Plug /  
USB Port Kit (69) detail.**

## SERVICE PARTS EXPLODED VIEW

FIG.	PART NO.	DESCRIPTION OF PART	NO. REQ.	FIG.	PART NO.	DESCRIPTION OF PART	NO. REQ.
1	05-74-0490	M6 x 15 Screw	4	60	31-44-0463	Rear Housing Kit	1
2	05-74-0491	M6 x 20 Screw	16	61	42-46-0022	Roll Cage Kit	1
3		Roll Cage	2	62	31-44-0476	H Handle Kit	1
7	05-74-0492	PA3 x 8 Screw	4	63	31-44-0477	Main Housing Assembly	1
8	05-74-0493	PA3.5 x 14 Screw	9	64	22-84-0020	Fan Kit	1
10	44-34-0037	Rubber Foot	4	65	31-44-0478	Front housing	1
11	05-74-0494	PA3.5 x 20 Screw	44	66	-----	IMD Lens Kit	1
12		Rear Cover	1	67	31-12-0069	AC Plug In Socket Kit	1
13		USB Module	1	68	14-20-0369	HMI PCBA Kit	1
15		PCBA Bracket	1	* 69	31-15-0157	Front Cover Plug / USB Port Kit	1
16	05-74-0495	PA2.5 x 8 Screw	4	70	42-42-0148	HMI Button Kit	1
17		Key Cap 1	1	71	23-37-0015	Inverter PCBA Kit	1
18		Key Cap 2	1	72	14-20-0434	Control PCBA Kit	1
19		HMI Board Module	1	73	43-92-0010	Bonding Lug Kit	1
20		Button	1	74	31-15-0232	USB PCBA Kit	1
21		Front Cover	1	75	31-44-0479	Front Housing Kit	1
22	44-06-0073	IMD Lens	1	76	22-64-0217	Power Cord	1
23	05-74-0496	PA3 x 12 Screw	4	77	12-20-0186	Service Nameplate (Not Shown)	1
26	05-74-0497	M4 x 10 Screw	2	78	10-20-7142	Warning Label (Not Shown)	1
27		Gasket	1	79	49-16-2845	Shoulder Strap (Accessory)	1
28	22-68-0051	USB-A Cover	1	80	22-68-0037	Bottom Cover Kit	1
29	22-68-0052	USB-C Cover	1				
31		AC Plug	1				
32		Control Board Module	1				
33		Inverter Module	1				
34		Bottom Cover	1				
50	05-74-0498	PA3 x 35 Screw	1				
51		Fan 1	1				
52		Fan 2	1				



## SERVICE PARTS EXPLODED VIEW

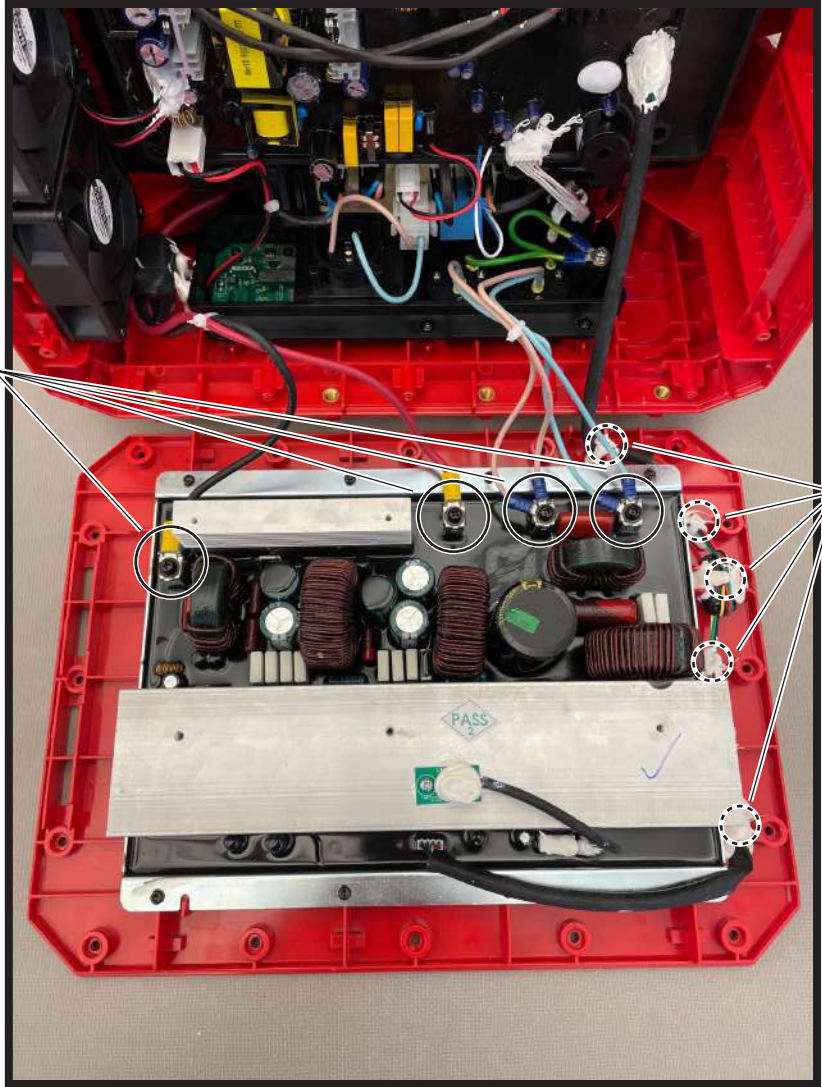
FIG.	PART NO.	DESCRIPTION OF PART	NO. REQ.
7	05-74-0492	PA3 x 8 Screw	4
8	05-74-0493	PA3.5 x 14 Screw	6
13	-----	USB Board Module	1
14	-----	Panel	1
23	05-74-0496	PA3 x 12 Screw	14
24	-----	PCBA Mounting Clip	2
25	-----	Adapter Board	1
26	05-74-0497	M4 x 10 PW Screw	2
27	-----	Gasket	1
28	22-68-0051	USB-A Cover	1
29	22-68-0052	USB-C Cover	1
30	-----	AC Plug Out	2
31	-----	AC Plug In	1
69	31-15-0157	Front Cover Plug / USB Port Kit	1
81	31-12-0281	AC Plug PCBA Kit	1

# WIRE ROUTING

Follow wire orientation of Main Housing Assembly (63) wires to Inverter PCBA (71).

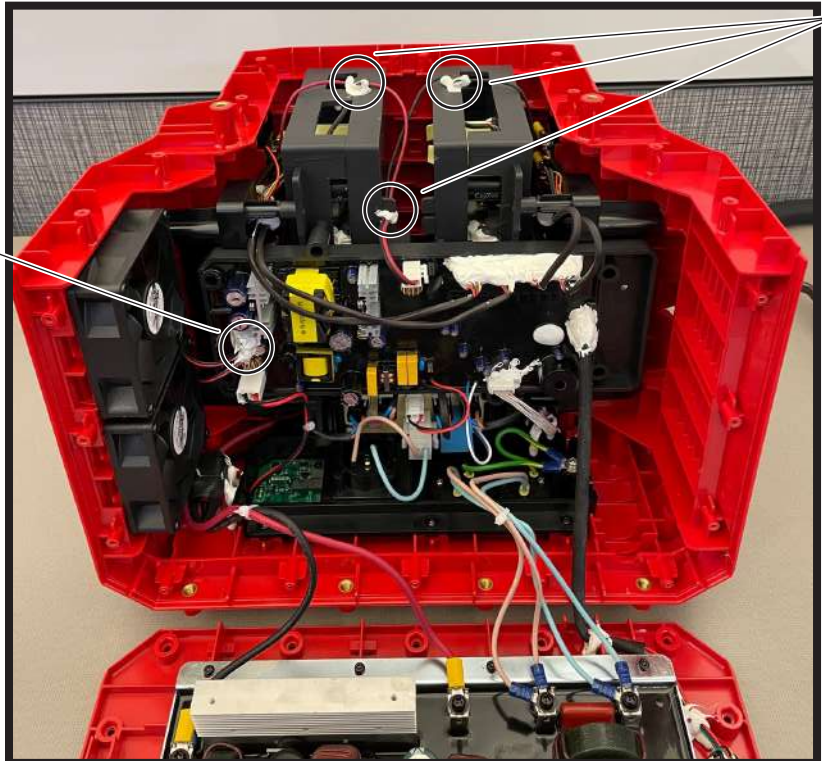


**ATTENTION**  
OBSERVE PRECAUTIONS  
FOR HANDLING  
ELECTROSTATIC  
SENSITIVE  
DEVICES



Wire harness from Main Housing Assembly (63) will have glued connection points in key wire traps.

Fan connection points.



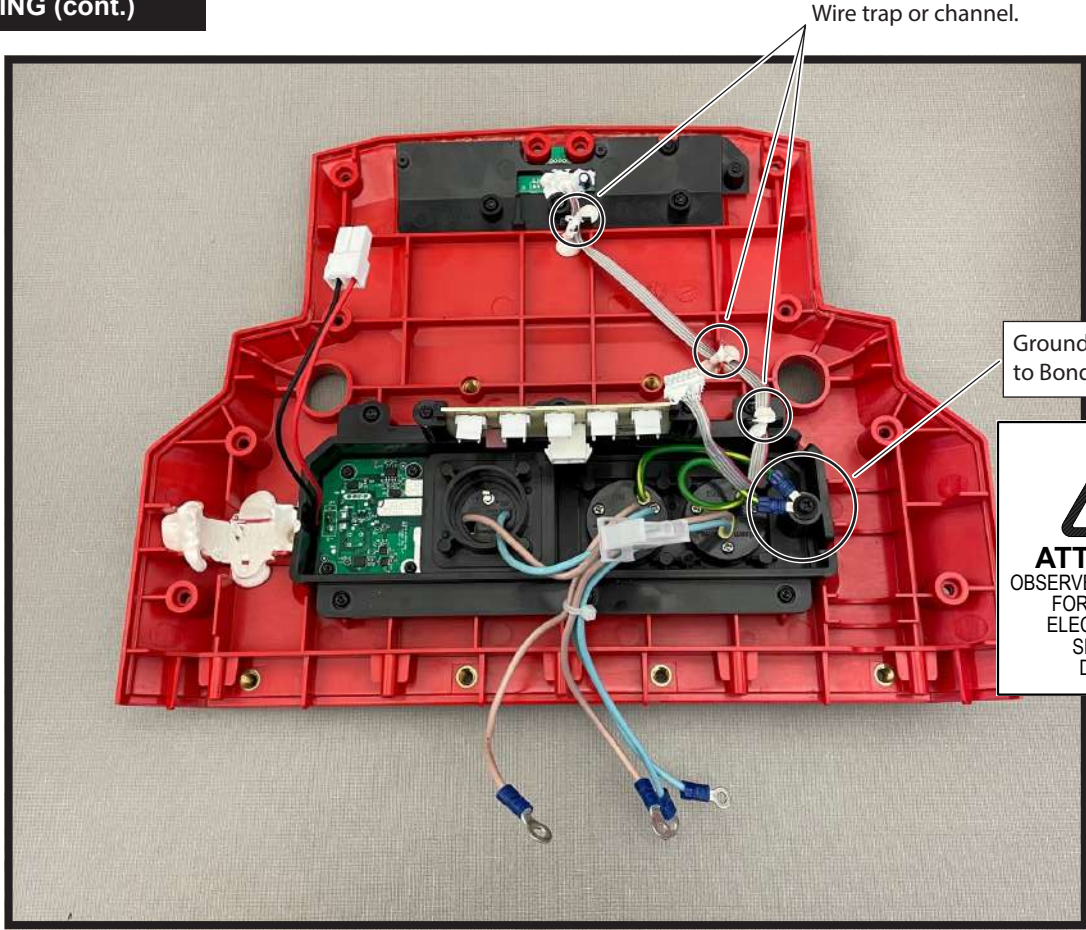
Wire trap or channel.



**ATTENTION**  
OBSERVE PRECAUTIONS  
FOR HANDLING  
ELECTROSTATIC  
SENSITIVE  
DEVICES

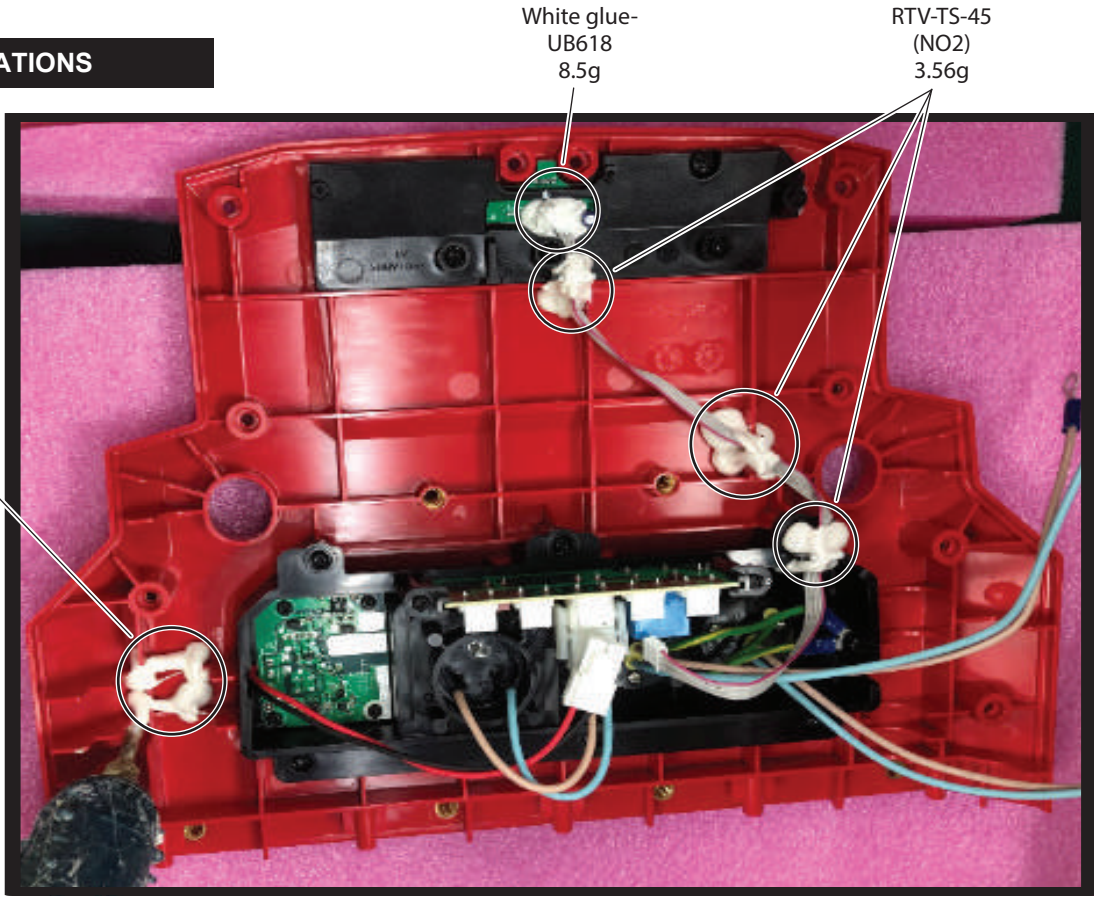


**WIRE ROUTING (cont.)**



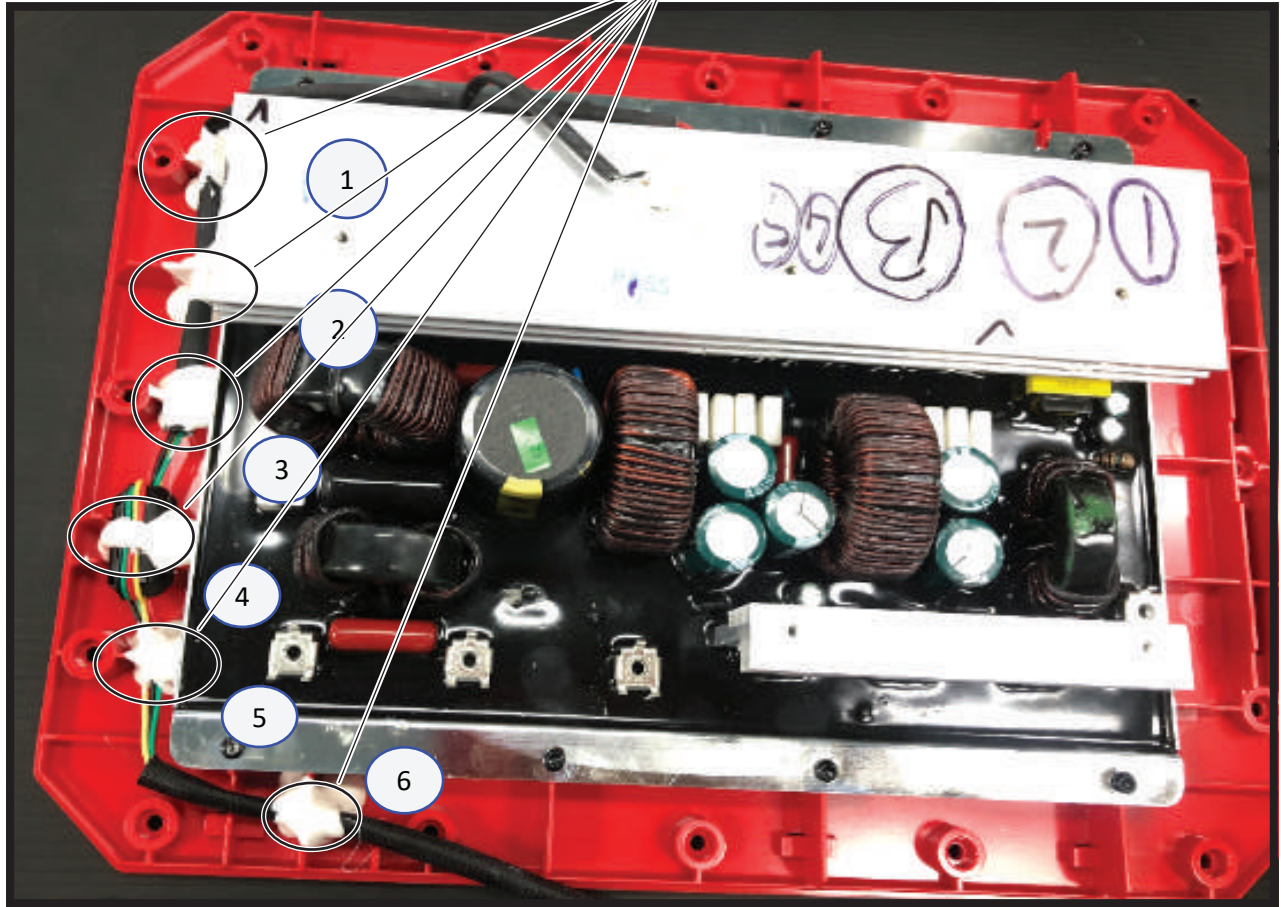
**ATTENTION**  
OBSERVE PRECAUTIONS  
FOR HANDLING  
ELECTROSTATIC  
SENSITIVE  
DEVICES

**GLUE LOCATIONS**



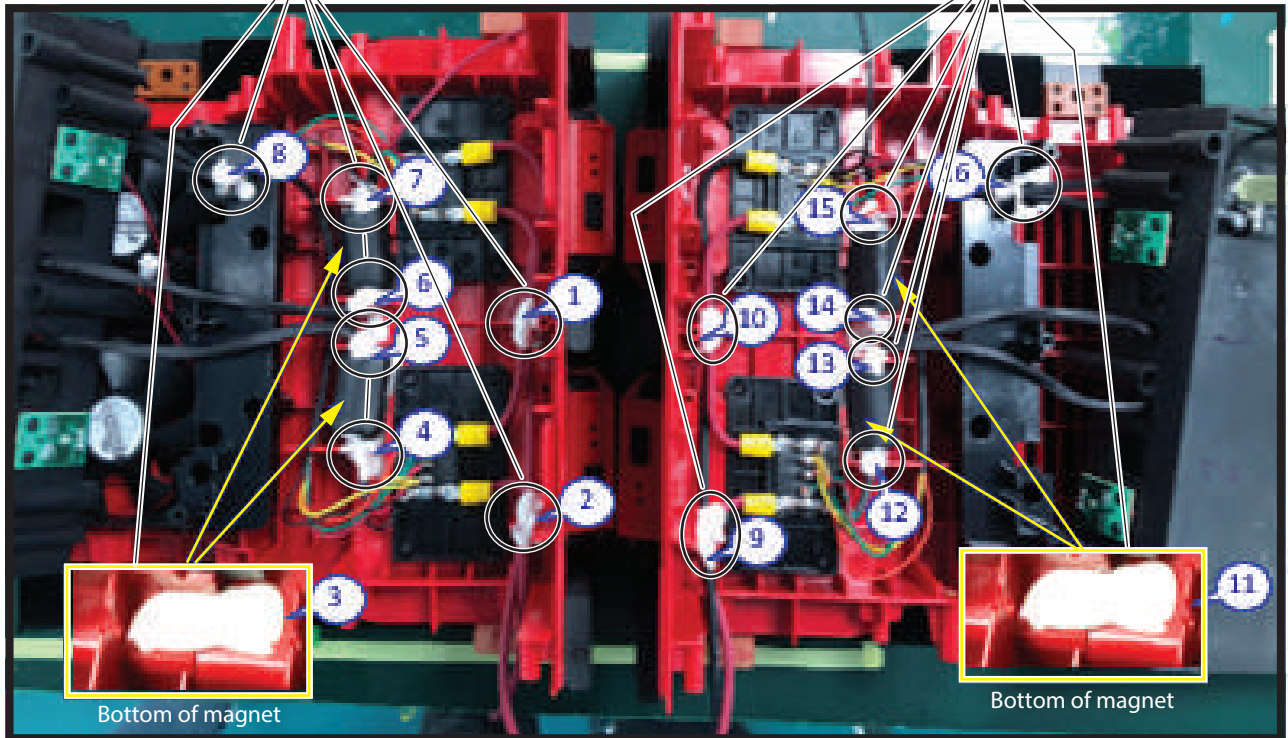
**GLUE LOCATIONS (cont.)**

White glue-UB618  
21.55g



White glue-UB618  
35.6g

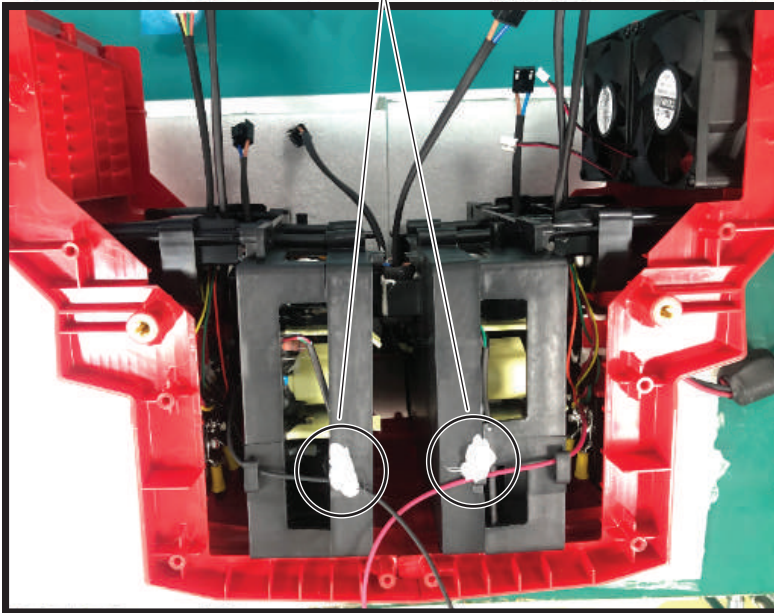
White glue-UB618  
35.6g



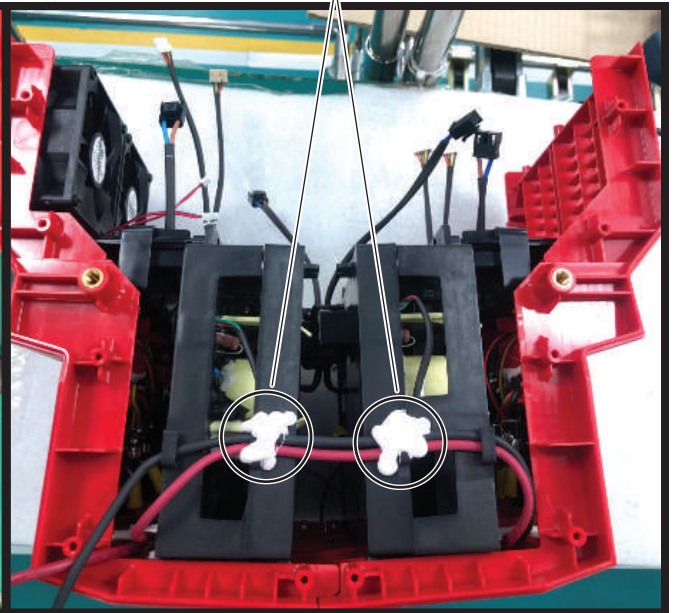


**GLUE LOCATIONS (cont.)**

White glue-UB618  
7.5g



White glue-UB618  
7.5g



RTV-TS-45 (NO2)  
30.06g

