



SERVICE PARTS LIST

BULLETIN NO.
54-00-2776

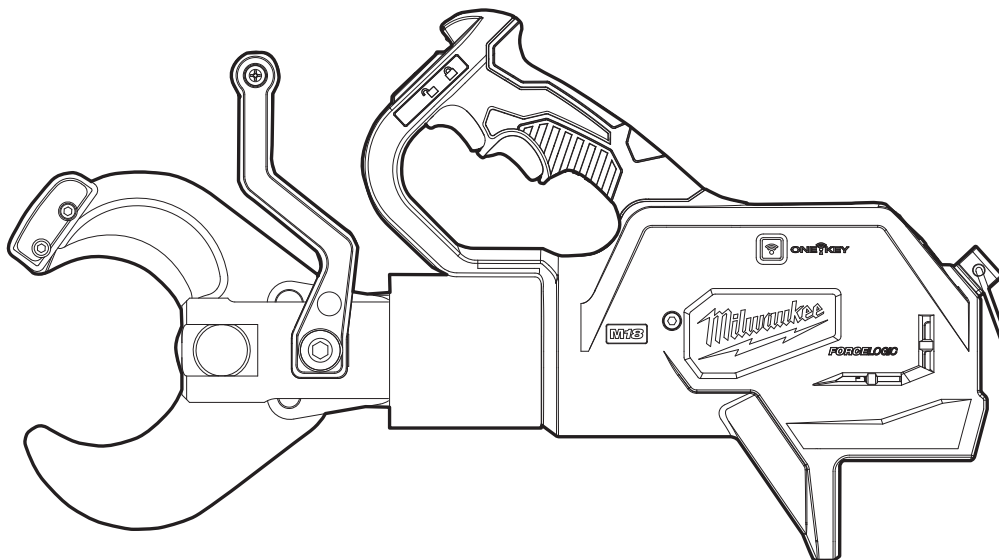
SPECIFY CATALOG NO. AND SERIAL NO. WHEN ORDERING PARTS			REVISED BULLETIN	DATE
M18™ FORCELOGIC™ 3" Underground Cable Cutter				Oct. 2019
CAT. NO.	2776-20 (Non-Remote)	SERIAL NUMBER	H49A	WIRING INSTRUCTION
CAT. NO.	2776R-20 (Wireless Remote)	SERIAL NUMBER	H50A	

CUTTER HEAD SERVICE PARTS PAGE 2

LUBRICATION INSTRUCTIONS PAGE 3

ACCESSORIES PAGE 2

TORQUE SPECIFICATIONS PAGE 4



**Due to the combination of hydraulics and electronics in this tool,
service can only be performed at Milwaukee Authorized Hydraulic Repair Centers:**

MILWAUKEE TOOL Central Repair

1401 Sycamore Avenue • Greenwood, MS 38930-7277

Please send your tool directly to this location for service.

Or

Via e-Service at: www.milwaukeetool.com/e-service

questions, please call 1.800.SAWDUST (1.800.729.3878)

Or

Visit www.milwaukeetool.com to find your closest
Milwaukee authorized Hydraulic repair center

Or

Return it to a MILWAUKEE *factory* Service Center location, freight prepaid and insured.
A copy of the proof of purchase should be included with the return product.

If you have questions please contact Milwaukee Product Service at:

Product Technical Support via phone at: 262.783.8642

Or

Via email at: METProductSupport@milwaukeetool.com

Disassembly is not recommended and could void the warranty.

Accessories and External Service Parts for 2776-20 & 2776R-20 3" Underground Cable Cutters

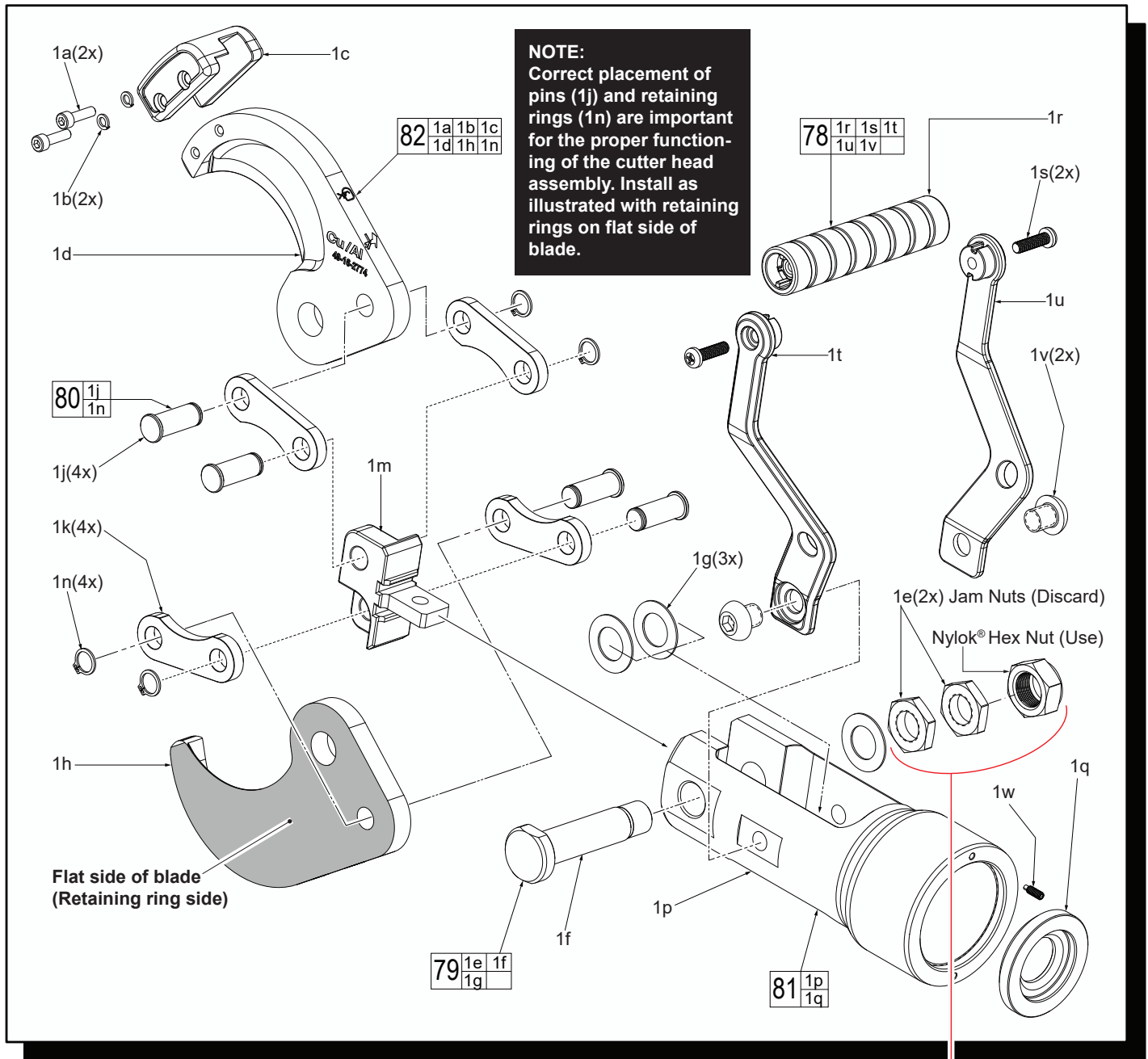



FIG.	PART NO.	DESCRIPTION OF PART	NO. REQ.
1	-----	Underground Cutter Head Assembly	(1)
1a	-----	M5 x 18mm Cap Screw 4mm Hex Drive	(2)
1b	-----	Spring Washer	(2)
1c	-----	Blade Retainer	(1)
1d	-----	Left Blade	(1)
1e	-----	M17 Nut	(2)
1f	-----	M18 Screw Bolt	(1)
1g	-----	Washer	(3)
1h	-----	Right Blade	(1)
1j	44-60-0049	Pin	(4)
1k	44-66-0116	Connector Plate	(4)
1m	44-14-0075	T-Connector	(1)
1n	34-80-1300	Retaining Ring	(4)
1p	-----	Clevis - Underground Cutter	(1)
1q	-----	Stop Ring	(1)
1r	-----	Bail Handle Grip	(1)
1s	-----	M6 x 22mm Pan Hd. Phillips Screw	(2)
1t	-----	Bail Handle Support - Left	(1)
1u	-----	Bail Handle Support - Right	(1)
1v	-----	M8 x 6.5 Screw with 8mm Hex Drive	(2)
1w	-----	Extended Point Set Screw	(1)
78	14-34-0122	Bail Handle Kit	(1)
79	42-32-0265	Screw Bolt Kit	(1)
80	44-60-0059	Pin Kit	(1)
81	-----	Clevis Assembly	(1)
82	49-16-2774	Replacement UG Cutter Blade Set	(1)

NOTE.

FIG.	PART NO.	DESCRIPTION OF PART	NO. REQ.
83	12-20-0089	Service Nameplate (Not Shown)	(1)
84	10-20-1119	Label for Wireless Remote (Not Shown)	(1)
85	42-70-0027	Carabiner (Not Shown)	(1)
86	48-22-8280	Underground Cutter Bag (Not Shown)	(1)
87	22-80-2776	Remote Control	(1)
		For 2776R-20 Only (Not Shown)	(1)

LUBRICATION INSTRUCTIONS

 S2 Grease, No. 49-08-5267

 243 Blue Loctite® Thread Sealant, 44-22-0095



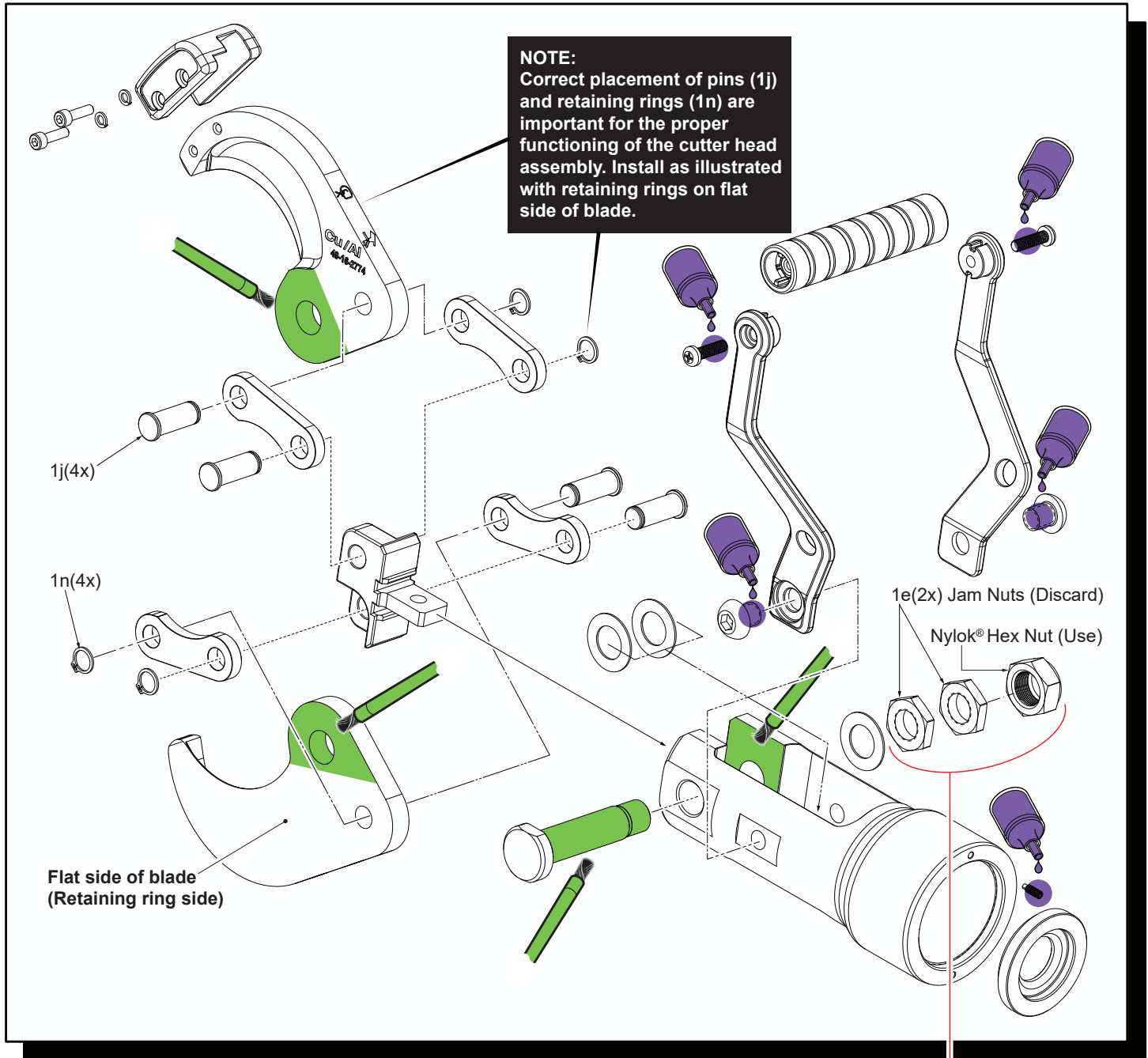
NOTE

Regarding parts to receive thread locking sealant:
Place one to two drops of the recommended Loctite® thread locking sealant (or the equivalent) to the threads of parts shown prior to installation.



NOTE

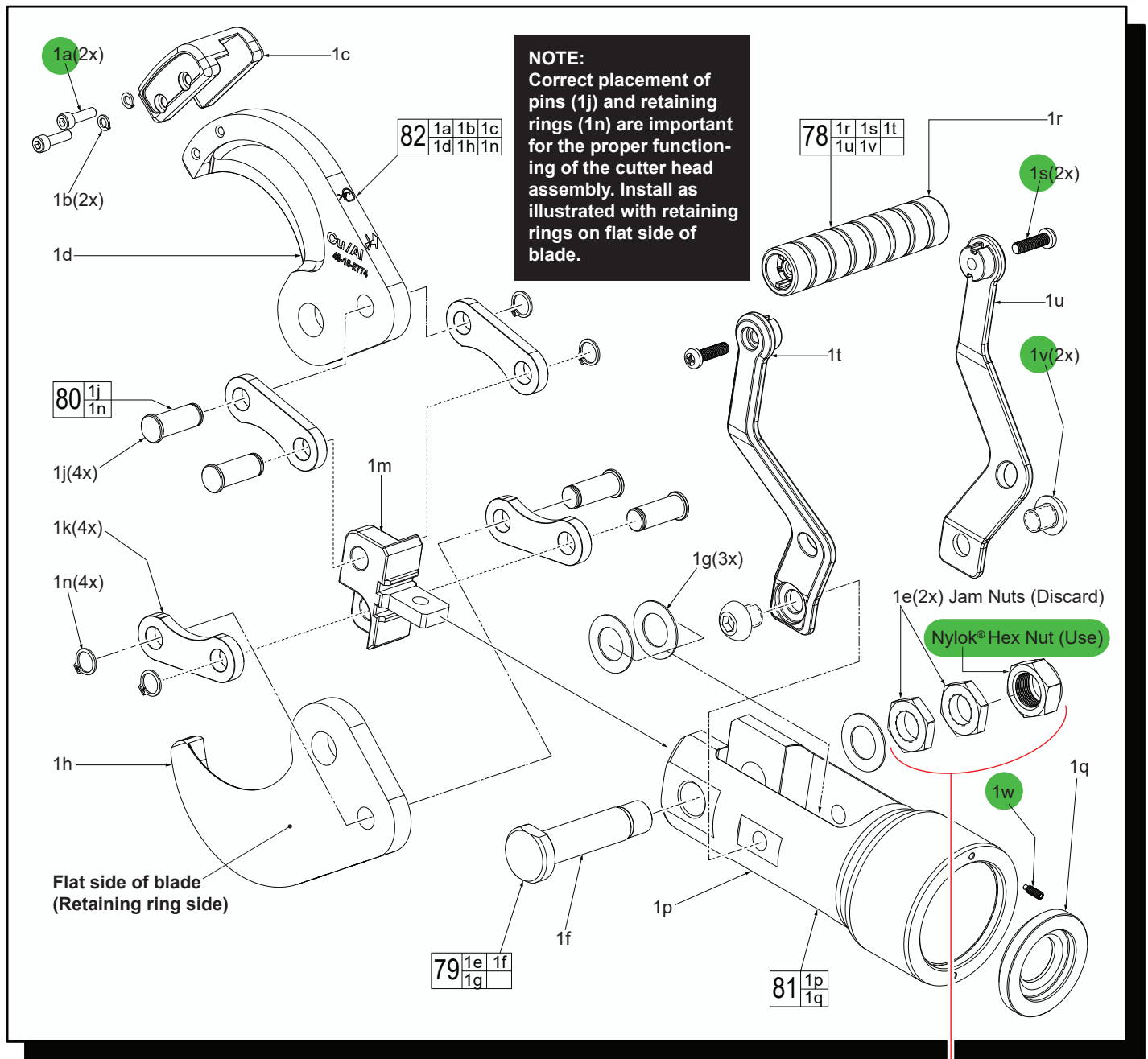
Regarding parts to be lubricated:
Apply a light coating of grease to all highlighted parts shown prior to installation. Reference the key above for grease types.



NOTE:

The original design of this tool utilized two jam nuts (1e) to aid in securing the Cutting Blades (82) in the Clevis Assembly (81). One M17 Nylok® Hex Nut now replaces the two jam nuts. When servicing the tool, DO NOT attempt to reuse the two jam nuts...remove and discard.

TORQUE SPECIFICATIONS



NOTE:

The original design of this tool utilized two jam nuts (1e) to aid in securing the Cutting Blades (82) in the Clevis Assembly (81). One M17 Nylok® Hex Nut now replaces the two jam nuts. When servicing the tool, DO NOT attempt to reuse the two jam nuts...remove and discard.

Cutter Head Assembly						
Torque Specifications *Red denotes Critical Torque						
Fig.	Part No.	Part or Where Used	KG/CM		IN/LBS	
1a		M5 x 18 Screw (Blade Retainer)	100	±3	86.8	±2
1e		M17 Hex Nut	175	±3	151.9	±2
1s		M6 x 22 Screw (Bail Handle Support)	30	±3	26.04	±2
1v		M12 x 6.5 Screw (Bail Handle Support)	100	±3	86.8	±2
1w		Extended Point Set Screw (Clevis)	10	±1	8.6	±1