

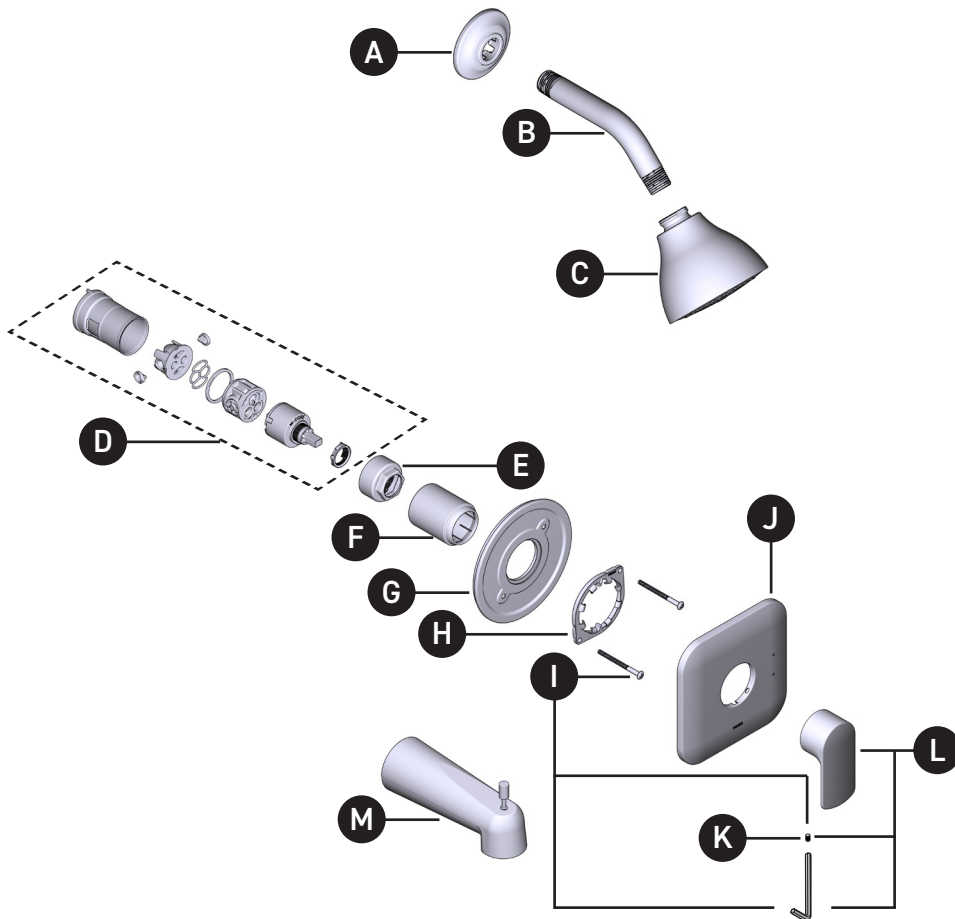
MOEN®

ORDER BY PART NUMBER

| VALVE TRIM ONLY | SHOWER TRIM ONLY | TUB SHOWER TRIM | FINISH |
|-----------------|------------------|-----------------|----------------|
| UT2811 | UT2812EP | UT2813EP | Chrome |
| UT2811BN | UT2812EPBN | UT2813EPBN | Brushed Nickel |
| UT2811BL | UT2812EPBL | UT2813EPBL | Matte Black |
| | UT2812NH | UT2813NH | Chrome |
| | UT2812NHBN | UT2813NHBN | Brushed Nickel |
| | UT2812NHBL | UT2813NHBL | Matte Black |

*All models with an EP suffix include a 1.75 GPM showerhead

**All models with an NH suffix do not include a showerhead



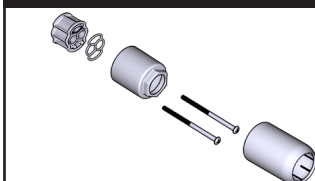
Illustrated Parts

RIZON™

Single-Handle M-CORE™ 2-Series Trim

| ID | Kit Description | Kit Number | Finish |
|----|------------------------------------|------------|----------------|
| A | Shower Arm Flange | AT2199 | Chrome |
| | | AT2199BN | Brushed Nickel |
| | | AT2199BL | Matte Black |
| B | Shower Arm | 10154 | Chrome |
| | | 10154BN | Brushed Nickel |
| | | 10154BL | Matte Black |
| C | Shower Head (1.75 GPM) | 6322EP | Chrome |
| | | 6322EPBN | Brushed Nickel |
| | | 6322EPBL | Matte Black |
| D | Cartridge Assembly | 1212 | N/A |
| E | Cartridge Nut | 200762 | N/A |
| F | Sleeve | 200776 | Chrome |
| | | 200776BN | Brushed Nickel |
| | | 200776BL | Matte Black |
| G | Backing Plate | 200766 | N/A |
| H | Snap Ring | 200772 | N/A |
| I | Backing Plate Screws (2) | 200764 | N/A |
| J | Escutcheon Kit | 206324 | Chrome |
| | | 206324BN | Brushed Nickel |
| | | 206324BL | Matte Black |
| K | Set Screw (Requires 3/32" Hex Key) | 40057 | N/A |
| L | Handle Kit | 200779 | Chrome |
| | | 200779BN | Brushed Nickel |
| | | 200779BL | Matte Black |
| M | Tub Spout | 3839 | Chrome |
| | | 3839BN | Brushed Nickel |
| | | 3839BL | Matte Black |

OPTIONAL: 1" Handle Extension Kit



| MODEL | FINISH |
|----------|----------------|
| 200779 | Chrome |
| 200779BN | Brushed Nickel |
| 200779BL | Matte Black |

