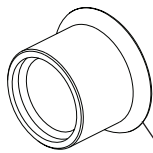
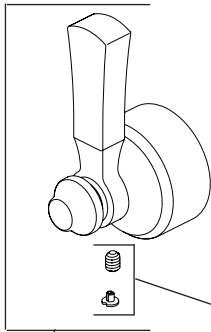


Models / Modelos / Modèles

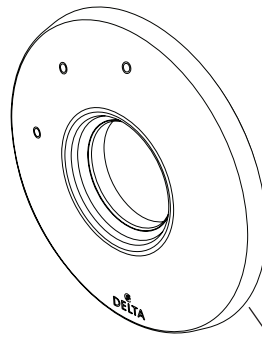
T11856 & T11956

Series/Series/Seria

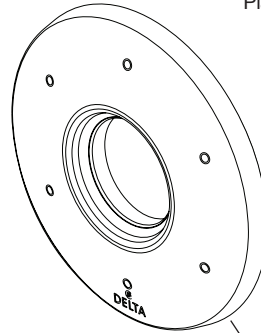
DORVAL™



RP51917▲
Trim Nut
Tuerca del accesorio
Écrou de finition



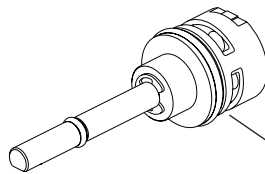
RP100952▲ (T11856)
3 Function Escutcheon Assembly & Valve Seal
Ensamble de la chapa y sello de la válvula, 3 funciones
Plaque de finition et clapet, 3 fonctions)



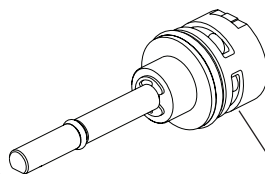
RP100953▲ (T11956)
6 Function Escutcheon Assembly & Valve Seal
Ensamble de la chapa y sello de la válvula, 6 funciones
Plaque de finition et clapet, 6 fonctions

RP100950▲
Diverter Handle, Set Screw & Button
Tornillo de ajuste y botón de la manija desviadora
Manette de l'inverseur, vis de calage et bouton

RP100951▲
Set Screw & Button
Tornillo de ajuste y botón
Vis de calage et bouton

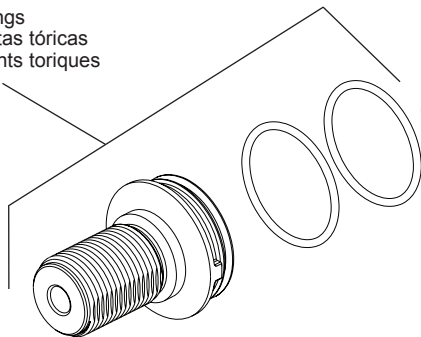


RP71717
2 Function, Non-Shared Diverter Cartridge
Cartucho desviador no-compartido de 2 funciones
Cartouche d'inverseur non partage, 2 fonctions



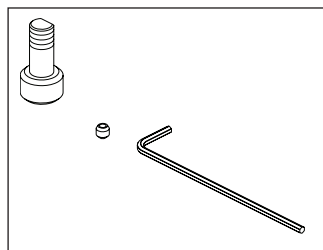
RP51918
3 Function Cartridge
Cartucho del desviador, 3 funciones
Cartouche d'inverseur, 3 fonctions

RP51916
Sleeve & O-Rings
Casquillo y juntas tóricas
Manchon et joints toriques



RP71718
3 Function, Non-Shared Diverter Cartridge
Cartucho desviador no-compartido de 3 funciones
Cartouche d'inverseur non partage, 3 fonctions

RP51919
6 Function Cartridge
Cartucho del desviador, 6 funciones
Cartouche d'inverseur, 6 fonctions



RP75137
Diverter Extension Kit
(Not included) (Adds 1" depth)
Juego de extensión desviadora
(Agrega 1 "de profundidad) (no se incluyen)
Kit de rallonge l'inverseur
(Ajoute 1 "profondeur) (non inclus)

▲Specify Finish/Especifique el Acabado/ Précisez le fini