

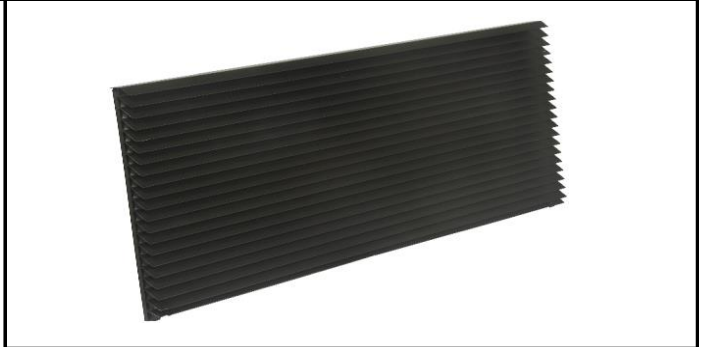
# Submittal Data: GRILLE-ALU-DBRONZ

Architectural Aluminum Grille

Job Name	Location	Date
Purchaser	Engineer	
Submitted To	For	<input type="checkbox"/> Reference <input type="checkbox"/> Approval <input type="checkbox"/> Construction
Schedule No.		

## GENERAL FEATURES

- Decorative architectural style aluminum grille.
- Powder coat painted for superior adhesion & protection.
- 42 in. x 16 in. design.
- Designed to be mounted easily from inside the room.
- Right & left drain hole knockouts provided.
- Condenser air baffle/gaskets with vertical air deflectors.



## Specifications

Material: Extruded aluminum, Alloy 6063-T5  
 Finish: Dark Bronze/Brown  
 Louver Thickness: 0.04 inch (1.016 mm), nominal  
 Louver Pitch: 50°  
 Condenser Free Area: 65.3 %

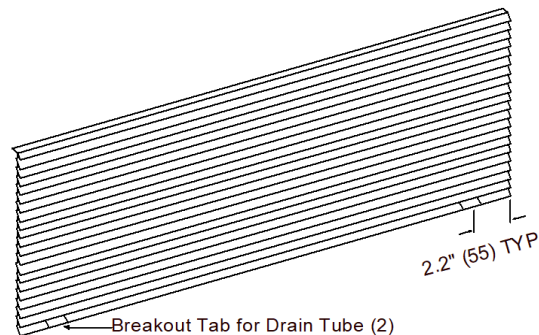
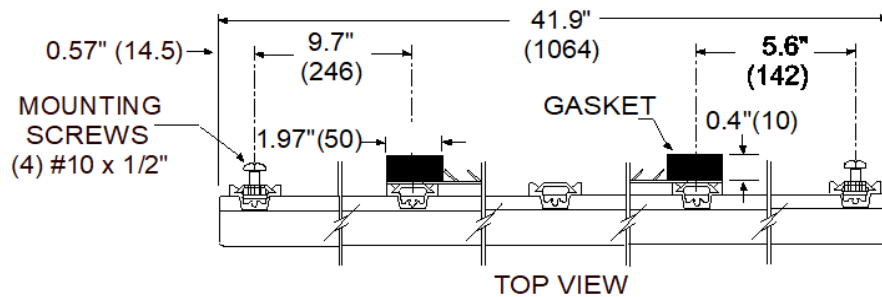
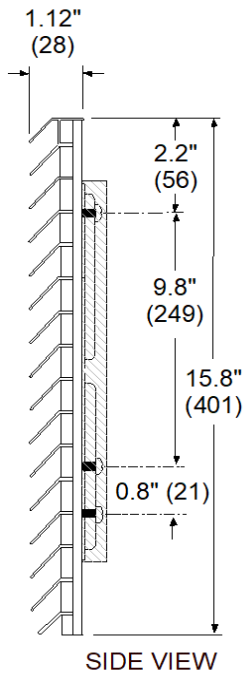
## Unit Dimensions

Length	41.9-in
Height	15.8-in
Depth	1.12-in
Weight	7.5-lbs

## Shipping Dimensions

Length	43.5-in
Height	2-in
Depth	16-in
Weight	8-lbs
Pallet Qty	44 pcs

Units: Inch(mm)



Specifications are subject to change without notice. Manufacturer reserves the right to discontinue or modify specifications or designs without notice or without incurring obligations. All rights reserved.