



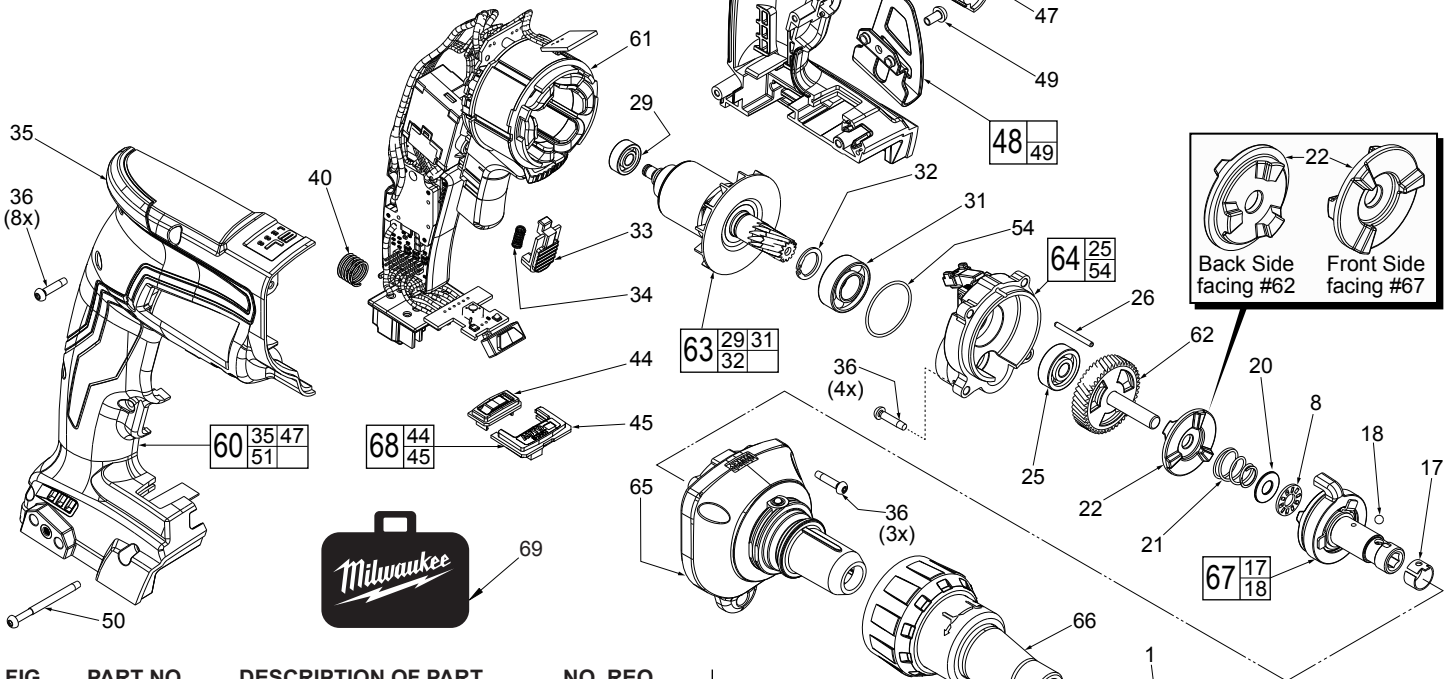
# SERVICE PARTS LIST

**BULLETIN NO.**  
**54-42-0020**

|  |                |   |             |
|--|----------------|---|-------------|
| SPECIFY CATALOG NO. AND SERIAL NO. WHEN ORDERING PARTS |                | REVISED BULLETIN                        | DATE        |
| <b>M18™ FUEL™ DRYWALL SCREWDRIVER</b>                  |                |   | Oct. 2016   |
| CATALOG NO.  | <b>2866-20</b> | STARTING SERIAL NO.                     | <b>H47A</b> |
|  |                | WIRING INSTRUCTION<br><b>See Page 2</b> |             |

**EXAMPLE:**  
Component Parts (Small #) Are Included  
When Ordering The Assembly (Large #).

| FIG. | PART NO.   | DESCRIPTION OF PART   | NO. REQ. |
|------|------------|-----------------------|----------|
| 1    | 48-32-3065 | Magnetic Bit Holder   | (1)      |
| 8    | 02-80-0055 | Thrust Bearing        | (1)      |
| 17   | 40-50-0132 | Bit Retaining Spring  | (1)      |
| 18   | 02-02-0130 | 9/64" Steel Ball      | (1)      |
| 20   | 45-88-0204 | Thrust Bearing Washer | (1)      |
| 21   | 40-50-0142 | Conical Spring        | (1)      |



| FIG. | PART NO.   | DESCRIPTION OF PART   | NO. REQ. |
|------|------------|---|----------|
| 22   | 42-70-0222 | Drive Clutch  | (1)      |
| 25   | 02-04-0640 | Ball Bearing  | (1)      |
| 26   | 44-60-0412 | Pin   | (1)      |
| 28   | -----      | Screwdriver Bit   | (1)      |
| 29   | 02-04-0033 | Ball Bearing  | (1)      |
| 31   | 02-04-0701 | Ball Bearing  | (1)      |
| 32   | 34-60-0575 | Retaining Ring  | (1)      |
| 33   | 31-15-0022 | Lock-On Slide Lever   | (1)      |
| 34   | 40-50-0422 | Lock-On Spring  | (1)      |
| 35   | -----      | Right Housing Halve-Housing Cover   | (1)      |
| 36   | 06-82-1080 | M3 x 14mm Pan Hd. ST T-10 Screw   | (15)     |
| 40   | 40-50-1090 | Terminal Block Spring   | (1)      |
| 44   | -----      | Auto Start Button   | (1)      |
| 45   | -----      | Auto Start Plate  | (1)      |
| 47   | -----      | Left Housing Halve-Housing Support  | (1)      |
| 48   | 42-70-0059 | Belt Clip Kit   | (1)      |
| 49   | 06-82-0130 | 6-32 x 5/16" Pan Hd. T-15 Mach. Scr.  | (1)      |
| 50   | 06-82-0013 | M3 x 38mm Pan Hd. ST T-10 Screw   | (1)      |
| 51   | 12-20-0101 | Service Nameplate   | (1)      |
| 54   | 34-40-0076 | O-Ring  | (1)      |
| 60   | 31-44-1086 | Housing Set   | (1)      |
| 61   | 14-20-2866 | Electronics Assembly<br>Consisting of:<br>Stator, Main PCBA, On-Off Switch,<br>LED, Mode Selector PCBA and<br>Battery Connector Block | (1)      |
| 62   | 32-10-0057 | Clutch Gear Assembly  | (1)      |
| 63   | 16-07-0212 | Rotor Assembly  | (1)      |
| 64   | 28-14-0711 | Rear Gearcase Assembly  | (1)      |
| 65   | 28-14-0712 | Front Gearcase Assembly   | (1)      |
| 66   | 49-26-1090 | Nosecone Assembly   | (1)      |
| 67   | 42-66-0025 | Clutch Chuck Assembly   | (1)      |
| 68   | 45-24-0305 | Auto Start Assembly   | (1)      |
| 69   | 42-55-2866 | FUEL™ Small Contractor Bag  | (1)      |
|      | 10-20-1048 | French/Spanish Warning Label (Not Shown)  | (1)      |

**LUBRICATION NOTE:**

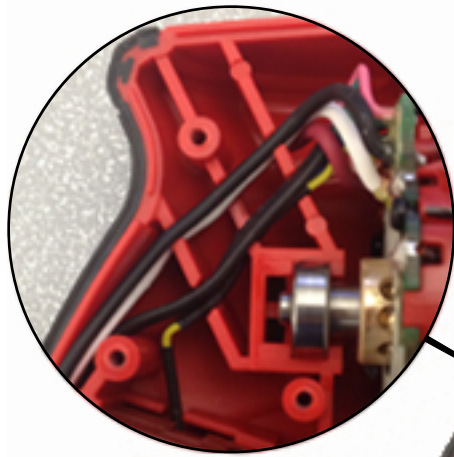
When servicing this tool, 90-95% of the old grease must be removed prior to new grease being added.

**LUBRICATION**

**(Type "Y" Grease, No. 49-08-5270)**

- Place a light coat of grease in the bottom inside cavity of rear gearcase (64) and over ball bearing (25). Use about .5 grams.
- Fill the 3 enlarged clutch pockets of the clutch gear assembly (62) with .5 grams grease. Install drive clutch (22).
- Add approximately 4.3 grams of grease into the rear gearcase, around the teeth of the armature pinion and the teeth of the clutch gear. Place a heavy coat of grease over the drive clutch (22).
- Coat with grease the thrust bearing (8), thrust bearing washer (20) and conical spring (21).
- Apply a light film of grease to the lead chamfer and barrel of the clutch chuck (67) prior to assembly into front gearcase (65).
- With clutch chuck (67) installed in the front gearcase (65), add approximately 3 grams of grease over the lugged surfaces of clutch chuck.

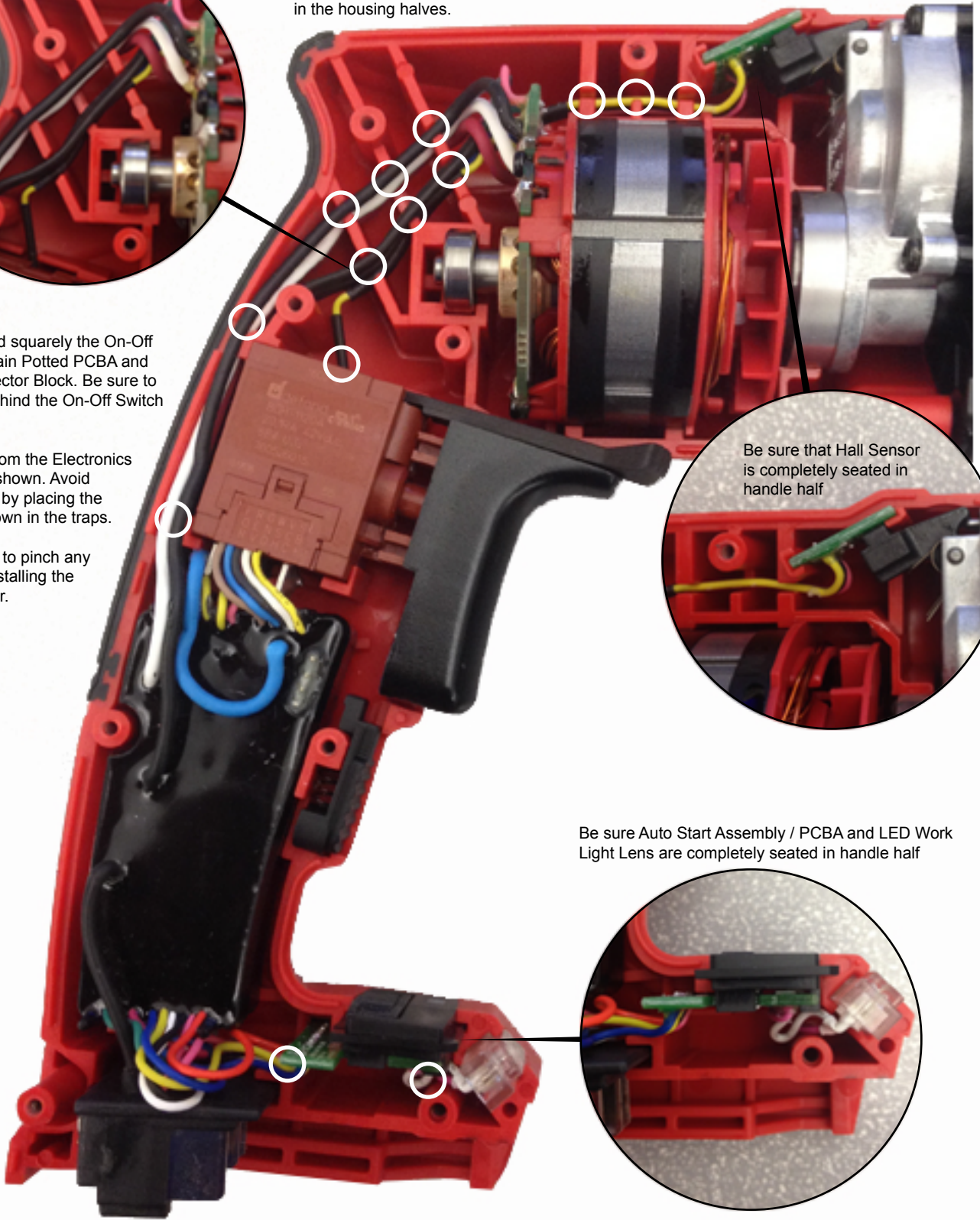
Seat the Stator in the housing half, being sure the grooves on each side of the stator fits onto the corresponding ribs in the housing halves.



Seat firmly and squarely the On-Off Switch, the Main Potted PCBA and Battery Connector Block. Be sure to route wires behind the On-Off Switch as shown.

Route wires from the Electronics Assembly as shown. Avoid pinched wires by placing the wires firmly down in the traps.

Be careful not to pinch any wires when installing the Housing Cover.



Be sure that Hall Sensor is completely seated in handle half



Be sure Auto Start Assembly / PCBA and LED Work Light Lens are completely seated in handle half

