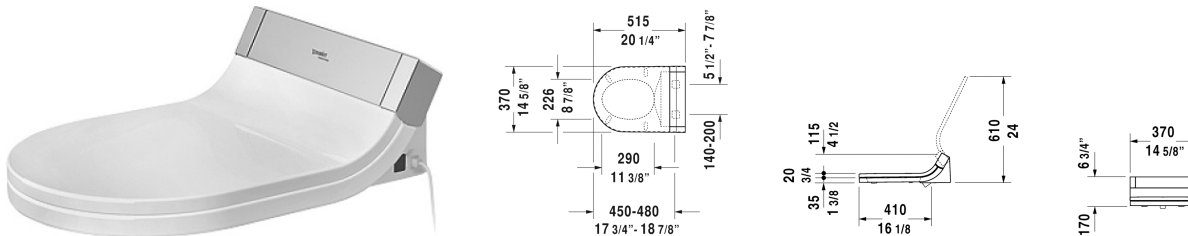


SensoWash Starck shower-toilet seat # 610000001040100

| < 14 5/8" Inch > |



SensoWash Starck shower-toilet seat	Dimension	Weight	Order number
remote control included, power actuated lid and seat, rear-, front and oscillating wash, individual adjustment of water-, air- and seat surface temperature as well as nozzle position and jet strength, self-cleaning wand, 2 individually programmable user profiles, night light, Quick release: easy seat unit removal and attachment, on / off-button, CIAPMO@ELECTRICAL			
Colors			
00 White			
Variant			
AC 100 - 120V 50 - 60Hz	14 5/8" x 20 1/4" Inch	12.6 lb	610000001040100
Infobox			
More information available at www.sensowash.com , Install a water water softener with water hardness ≥ 2.4 mmol/l ($\geq 14^\circ$ dH or 24° fH)., Suitable for selected Starck 2, Starck 3 und Darling New ceramics			
Suitable products			
Two-Piece toilet (without tank), US-version toilet, suitable for SensoWash Starck, syphonic, 12" rough-in, vertical outlet, cUPC listed, 1.28 gpf, 14 5/8" x 27 3/4" Inch	14 5/8" x 27 3/4" Inch		212501
One-Piece toilet US-version toilet, suitable for SensoWash Starck, syphonic, 12" rough-in, with Single Flush mechanism, with side lever, 3" flapper valve, vertical outlet, cUPC listed, 1.28 gpf, 14 5/8" x 28 1/8" Inch	14 5/8" x 28 1/8" Inch		212001
Toilet wall-mounted washdown model, suitable for SensoWash Starck, Durafix included, cUPC listed, 14 1/5" x 24 3/8" Inch	14 1/5" x 24 3/8" Inch		222609
Toilet wall-mounted washdown model, Durafix included, suitable for SensoWash Starck, cUPC listed, 14 3/5" x 24 3/5" Inch	14 3/5" x 24 3/5" Inch		254409
One-Piece toilet US-version toilet, back-to-wall, syphonic, 12" rough-in, with Single Flush piston valve, top flush, suitable for SensoWash Starck, vertical outlet, cUPC listed, 1.28 gpf, 15 3/4" x 28 1/8" Inch	15 3/4" x 28 1/8" Inch		212301
Two-Piece toilet (without tank), US-version toilet, suitable for SensoWash Starck, syphonic, 12" rough-in, vertical outlet, cUPC listed, 1.28 gpf, 14 5/8" x 27 1/2" Inch	14 5/8" x 27 1/2" Inch		212601

SensoWash Starck shower-toilet seat # 610000001040100

|< 14 5/8" Inch >|

Toilet wall-mounted washdown model, Durafix included, suitable for SensoWash Starck, cUPC listed, 14 1/8" x 24 3/8" Inch	14 1/8" x 24 3/8" Inch	253309
Toilet close-coupled (without tank), washdown model, suitable for SensoWash Starck, outlet for vario connector set, for horizontal and vertical outlet, length adjustable from 2 3/4" - 7 7/8", and vario connecting bend, vertical outlet from 7 7/8" - 9 1/2", hardware included, cUPC listed, 14 3/4" x 28 3/8" Inch	14 3/4" x 28 3/8" Inch	212909
Toilet close-coupled (without tank), washdown model, suitable for SensoWash Starck, outlet for vario connector set, for horizontal and vertical outlet, length adjustable from 2 3/4" - 7 7/8", and vario connecting bend, vertical outlet from 7 1/2" - 9", hardware included, cUPC listed, 14 5/8" x 27 3/4" Inch	14 5/8" x 27 3/4" Inch	214109
One-Piece toilet US-version toilet, suitable for SensoWash Starck, syphonic, 12" rough-in, with Single Flush piston valve, top flush, vertical outlet, cUPC listed, 1.28 gpf, 14 3/4" x 28 1/8" Inch	14 3/4" x 28 1/8" Inch	213301

All drawings contain the necessary measurements which are subject to standard tolerances. They are stated in inch & mm and are non-binding. Exact measurements, in particular for customized installation scenarios, can only be taken from the finished ceramic piece.