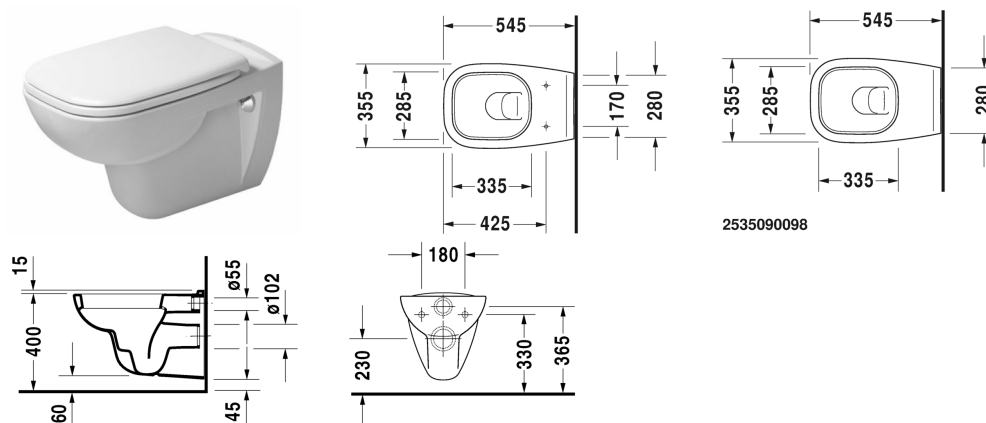


**D-Code Toilet wall mounted # 253509..002**

|&lt; 355 mm &gt;|



Toilet wall mounted	Dimension	Weight	Order number
washdown model, EWL class 1			
<b>Colors</b>			
00 White Alpin 20 HygieneGlaze (an antibacterial ceramic glaze that provides almost indefinite effectiveness)			
<b>Variant</b>			
♻ 4,5 l	355 x 545 mm	20.000 kilogram	253509..002
<b>Infobox</b>			
Wall-mounted toilet is ADA compliant, when installed with a seat height of 17" - 19" from the finished floor, If pre-wall carrier not used, the fixing # 006500 is recommended			
<b>Accessory for ceramics</b>			
Fixing for wall mounted bidet and wall mounted toilet	Ø 12 x 180 mm	0.200 kilogram	006500
<b>Accessory</b>			
Noise reduction gasket for wall mounted toilet		0.300 kilogram	005020
<b>Suitable products</b>			
Toilet seat and cover hinges plastic, with soft closure,			006739
Toilet seat and cover hinges stainless steel, without soft closure,			006731

*All drawings contain the necessary measurements which are subject to standard tolerances. They are stated in mm and are non-binding. Exact measurements, in particular for customised installation scenarios, can only be taken from the finished ceramic piece.*