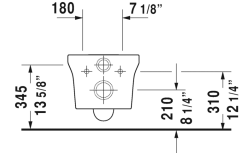
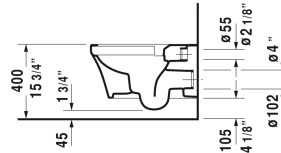
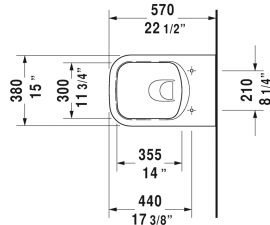


P3 Comforts Toilet wall-mounted Duravit Rimless® #
256109..92 / 256109..921

| < 15" Inch > |



Toilet wall-mounted Duravit Rimless®	Dimension	Weight	Order number
rimless, washdown model, Durafix included, cUPC listed			
Colors			
00 White 20 HygieneGlaze (an antibacterial ceramic glaze that provides almost indefinite effectiveness)			
Variant			
◆ 1.6/0.8 gpf	15" x 22 1/2" Inch	54 lb	256109..92
◆ 1.6/0.8 gpf	15" x 22 1/2" Inch	54 lb	256109..921
Infobox			
Durafix for concealed fixation is included, In-wall tank & carrier and actuator plate required for installation / Refer to page XXX			
Hardware for wall-mounted bidet and wall-mounted toilet	Ø 1/2" x 7 1/8" Inch	0.4 lb	006500
Noise reduction gasket for wall-mounted toilet		0.7 lb	005064
Geberit in-wall tank and carrier width 19 3/4", depth 5 1/2" height (adjustable) 43" - 47"	19 3/4" x 5 1/2" Inch	38 lb	111335
Sigma 01 flush plate, dual flush White	9 5/8" x 6 1/2" Inch		115770
Suitable products			
Toilet seat and cover hinges stainless steel, without slow close,			002031
Toilet seat and cover removable, hinges stainless steel, with slow close,			002039

All drawings contain the necessary measurements which are subject to standard tolerances. They are stated in inch & mm and are non-binding. Exact measurements, in particular for customized installation scenarios, can only be taken from the finished ceramic piece.