



## Positemp Cartridge Installation

Tools needed:

7/64 Allen



Wrench Pliers or Channel Locks



Phillips Screwdriver



Soft Brush



**Caution:** Always turn your water supplies off before disassembling your faucet. With the supplies turned off, move your faucet's handle to the "on" position to relieve pressure.

### For KNOB Handle:

**A1.** Remove cap using flat instrument.



**A2.** Remove Phillips screw and washer.



**A3.** Remove knob. *(go to step 1 below)*



### For LEVER Handle:

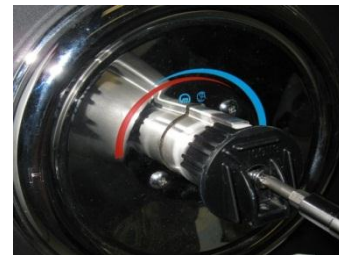
**B1.** Remove screw using 7/64" hex wrench.



**B2.** Remove Lever Handle.



**B3.** Remove Phillips screw.

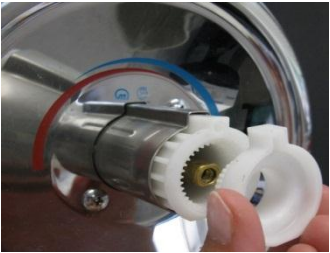


**B4.** Remove Handle adapter. *(go to step 1 below)*



**STEPS 1-8:**

1. Remove temperature limit stops.



2. Pull stop tube off of valve body.



3. Remove cartridge clip **\*\* (See Page 2)**



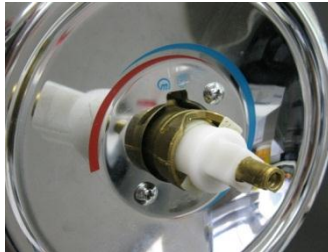
4. Place twisting tool on old cartridge.



5. Using pliers, rotate twisting tool.



6. Cartridge body will pop outwards.



7. Using pliers, pull on cartridge stem.



8. Clean valve with nylon brush and water

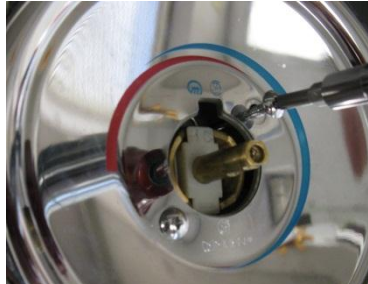


**"What if I can't reach my clip?"**

1. If Cartridge clip is recessed (as shown below)



2. Remove Escutcheon plate screws.



3. Remove Escutcheon plate and remove clip.



**“How does the cartridge go back into the valve?”**

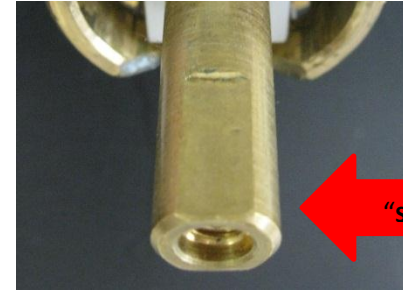
1. Position cartridge with “H & C” on the top.



2. Ensure that “notched flat” side of brass stem is facing opposite of “H&C”.



3. Smooth side faces same direction as “H&C”.



**“My hot and cold are reversed...How do I fix this?”**

1. Remove cartridge.



2. Rotate cartridge body 180 degrees and re-install with “H&C” on bottom.



# Post Installation - Troubleshooting Guide

Problem	Possible Cause	To Diagnose	Remedy
<b>Hot/cold reversed</b>	Lines reversed/ cartridge installed upside down	Hot/cold reversed	Rotate cartridge 180°
<b>No water/low flow</b>	One or both supplies not on to the unit	No water/low flow	Turn both water supply valves counterclockwise to the on position
<b>Leak or drip from spout</b>	Grommets not sealing properly	Leak/drip from spout	Replace cartridge
<b>Only hot/no cold – Only cold/no hot</b>	Balancing spool stuck	Only hot/no cold – Only cold/no hot	Replace cartridge
<b>Restricted temperature range</b>	Handle (more common in knob models) is installed upside down	In the off position, able to turn the handle both clockwise and counterclockwise	Remove handle, rotate 180°, re-install

