

MAGNA3 100-120 F 450 1x230V PN6 Grundfos pump 97924315




Thank you for your interest in our products. Please contact us for more information, or visit our website

<https://www.lenntech.com/grundfos/MAGNA3/97924315/MAGNA3-100-120-F.html>

info@lenntech.com

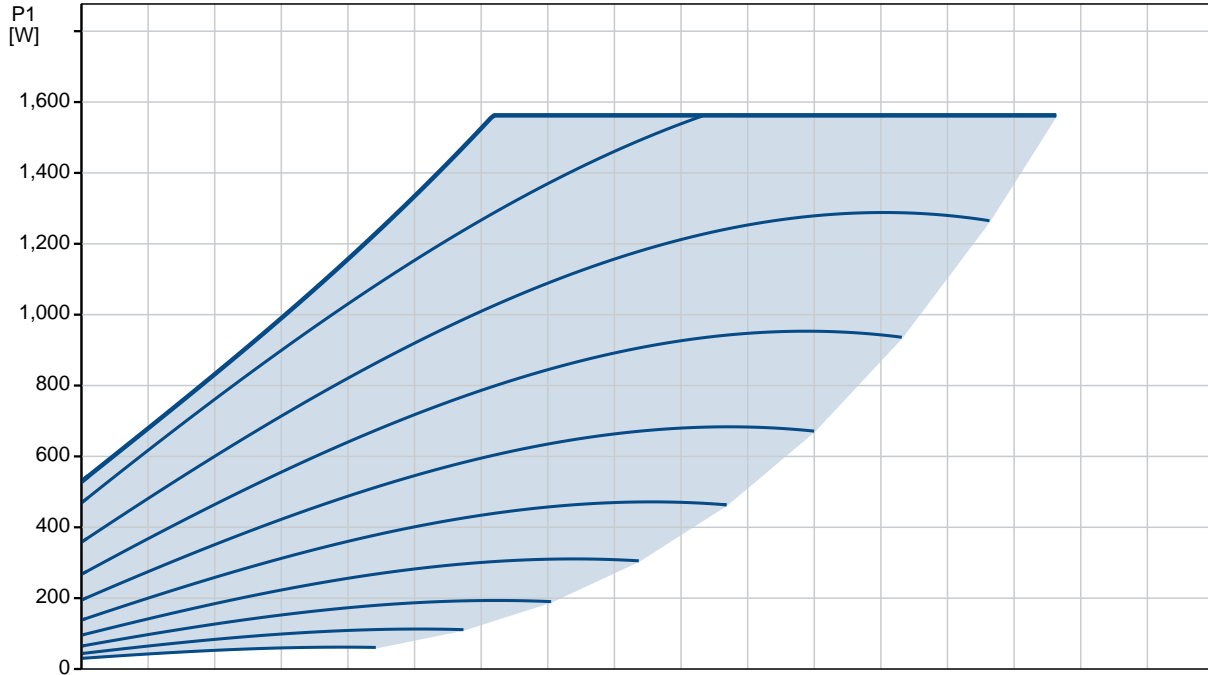
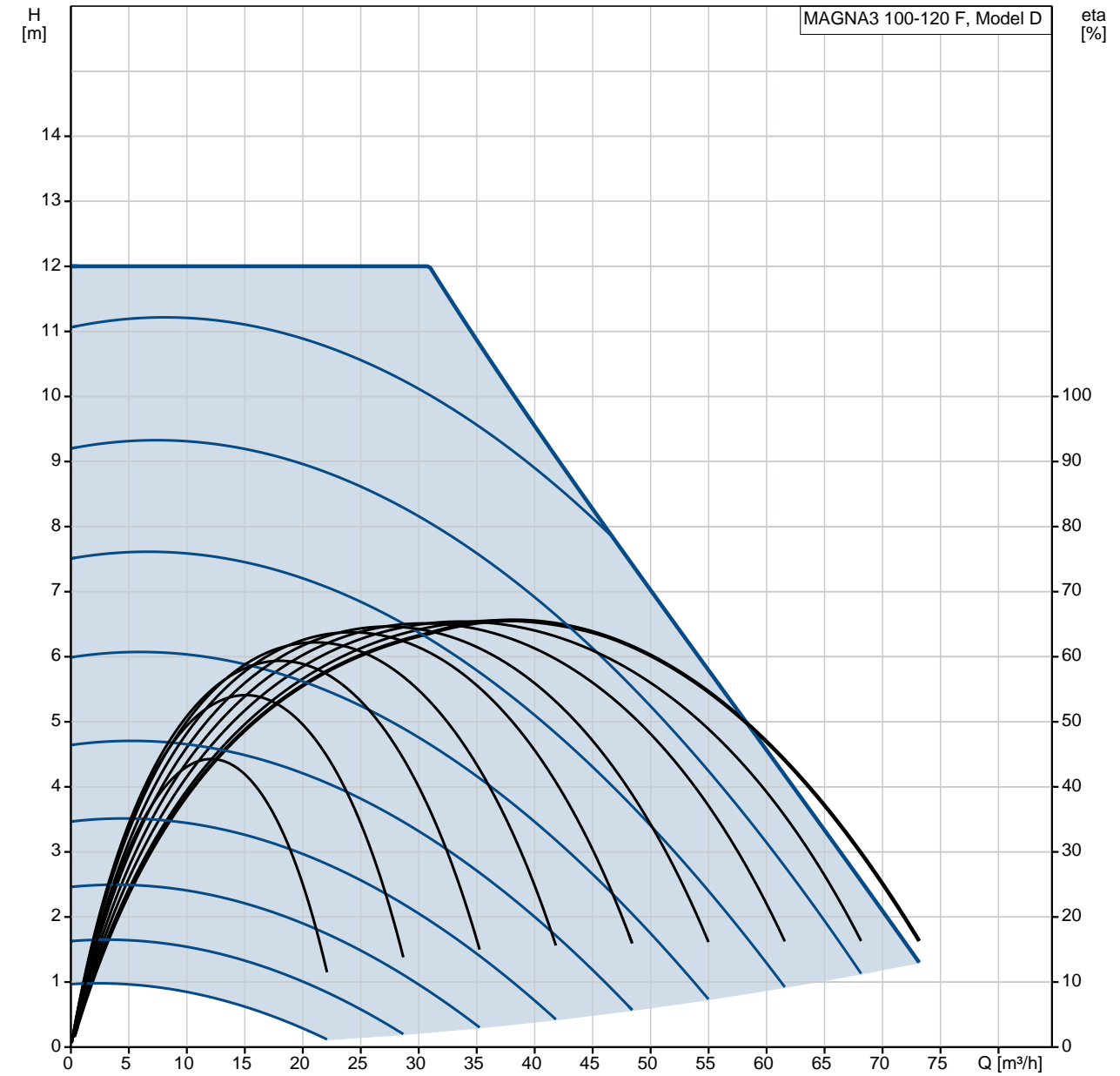
tel. +31 152 610 900

fax. +31 152 616 289

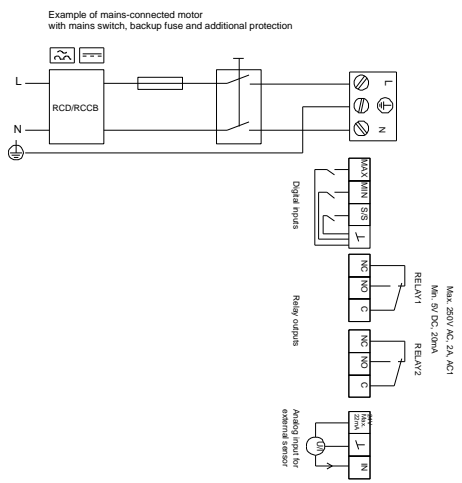
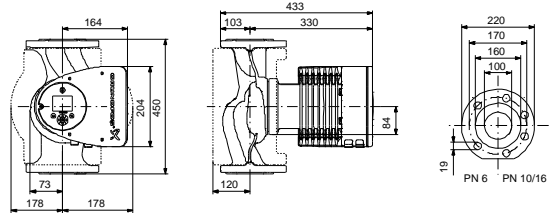
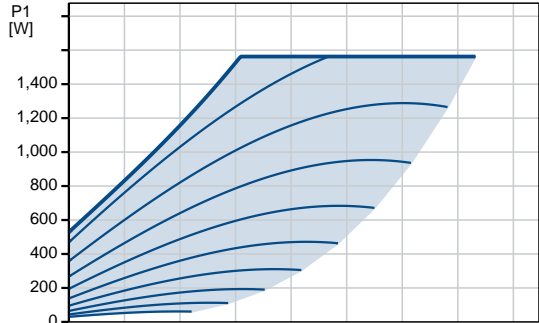
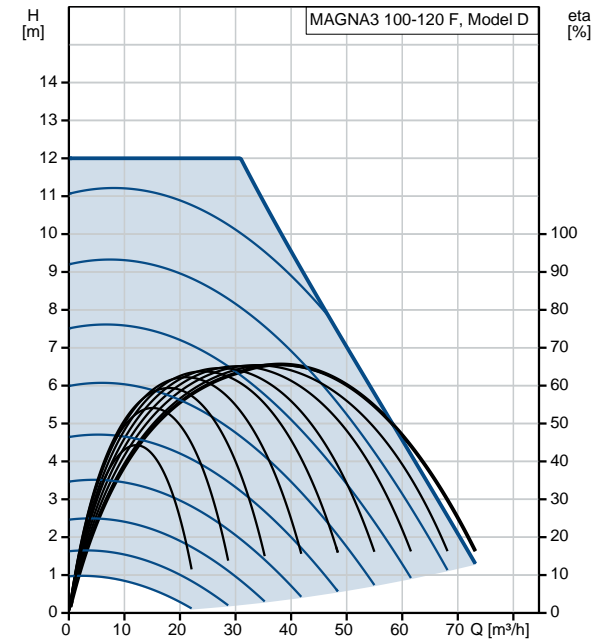
Position	Qty.	Description
	1	<p data-bbox="320 163 550 194">MAGNA3 100-120 F</p>  <p data-bbox="320 483 600 515">Product No.: On request</p> <p data-bbox="320 544 1433 620">With its unrivalled efficiency, all-encompassing range and built-in communication capabilities, the MAGNA3 is ideal for engineers and specifiers looking to create high-performance heating and cooling systems.</p> <p data-bbox="320 629 1114 660">MAGNA3 is the ideal choice for almost any building project – old or new.</p> <p data-bbox="320 660 1433 714">The pump is of the canned-rotor type, which means that pump and motor form an integral unit without shaft seal and with only two gaskets for sealing. The bearings are lubricated by the pumped liquid.</p> <p data-bbox="320 716 1394 748">The MAGNA3 is a pump with no maintenance requirements and with extremely low life cycle cost.</p> <p data-bbox="320 777 635 808">Characteristic features</p> <ul data-bbox="357 810 1362 1227" style="list-style-type: none"> • AUTOADAPT • FLOWADAPT and FLOWLIMIT (reduces the need for pump throttling valves) • Proportional-pressure control • Constant-pressure control • Constant-temperature control • Differential temperature control (requires an additional temperature sensor) • Constant-curve duty • Maximum and minimum curve duty • Automatic night setback • Heat energy monitor • No external motor protection required • Innovative clamp ring with only one screw enabling easy repositioning of the pump head • Insulating shells supplied with single-head pumps for heating systems • Large temperature range due to air cooled electronics <p data-bbox="320 1256 539 1288">Communication</p> <ul data-bbox="357 1290 1053 1440" style="list-style-type: none"> • Wireless communication with the Grundfos GO Remote app • Fieldbus communication via CIM modules • Digital inputs • Relay outputs • Analog input <p data-bbox="320 1469 531 1500">Product details</p> <p data-bbox="320 1503 1118 1534">The MAGNA3 is a single-phase pump and characterised by the following</p> <ul data-bbox="357 1536 1121 1800" style="list-style-type: none"> • Controller integrated in the control box • Control panel with TFT display on the control box • Control box prepared for optional CIM modules • Built-in differential-pressure and temperature sensor • Cast-iron pump housing (also available in stainless steel versions) • Carbon-fibre-reinforced composite rotor can • Stainless-steel bearing plate and rotor cladding • Aluminium alloy stator housing • Air-cooled power electronics <p data-bbox="320 1830 748 1861">Motor and electronic controller</p> <p data-bbox="320 1863 1420 1917">The MAGNA3 incorporates a 4-pole synchronous, permanent-magnet motor (PM motor). This motor type is characterised by higher efficiency than a conventional asynchronous squirrel-cage motor.</p> <p data-bbox="320 1919 1062 1951">The pump speed is controlled by an integrated frequency converter.</p> <p data-bbox="320 1980 405 2011">Liquid:</p> <p data-bbox="320 2013 751 2045">Pumped liquid: Water</p> <p data-bbox="320 2047 825 2078">Liquid temperature range: -10 .. 110 °C</p> <p data-bbox="320 2080 804 2112">Liquid temperature during operation: 60 °C</p>

Position	Qty.	Description
		Density: 983.2 kg/m ³ Technical: Rated flow: 37.5 m ³ /h Rated head: 9.7 m TF class: 110 Approvals on nameplate: CE,VDE,EAC,CN ROHS,WEEE Materials: Pump housing: Cast iron EN-GJL-250 ASTM A48-250B Impeller: PES 30%GF Installation: Range of ambient temperature: 0 .. 40 °C Maximum operating pressure: 6 bar Flange standard: DIN Pipe connection: DN 100 Pressure rating: PN6 (@): 450 mm Electrical data: Power input - P1: 31 .. 1564 W Mains frequency: 50 Hz Rated voltage: 1 x 230 V Maximum current consumption: 0.32 .. 7 A Enclosure class (IEC 34-5): X4D Insulation class (IEC 85): F Others: Energy (EEI): 0.17 Net weight: 35.1 kg Gross weight: 37.3 kg Shipping volume: 0.099 m ³ Danish VVS No.: 380963112 Swedish RSK No.: 5732515 Norwegian NRF no.: 9042709

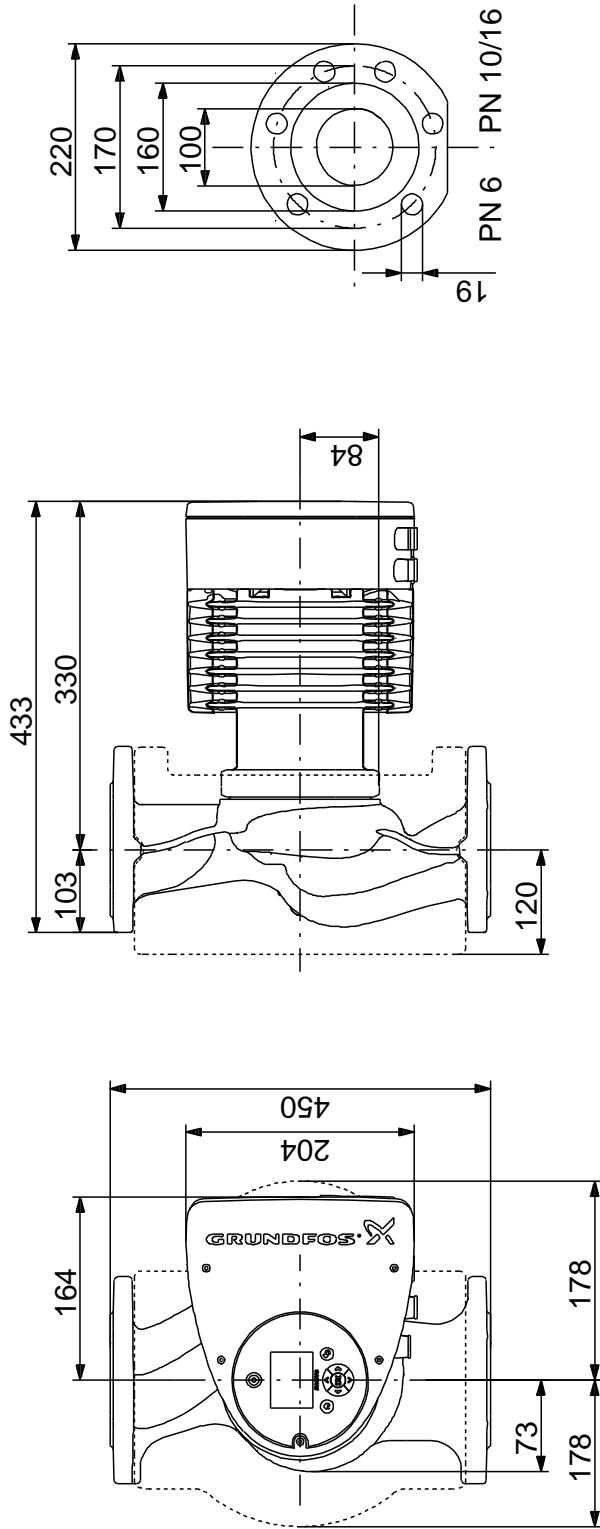
On request MAGNA3 100-120 F 50 Hz



Description	Value
General information:	
Product name:	MAGNA3 100-120 F
Product No:	On request
EAN number:	On request
Technical:	
Rated flow:	37.5 m ³ /h
Rated head:	9.7 m
Head max:	120 dm
TF class:	110
Approvals on nameplate:	CE, VDE, EAC, CN ROHS, WEEE D
Model:	D
Materials:	
Pump housing:	Cast iron EN-GJL-250 ASTM A48-250B
Impeller:	PES 30%GF
Installation:	
Range of ambient temperature:	0 .. 40 °C
Maximum operating pressure:	6 bar
Flange standard:	DIN
Pipe connection:	DN 100
Pressure rating:	PN6
(@)	450 mm
Liquid:	
Pumped liquid:	Water
Liquid temperature range:	-10 .. 110 °C
Liquid temperature during operation:	60 °C
Density:	983.2 kg/m ³
Electrical data:	
Power input - P1:	31 .. 1564 W
Mains frequency:	50 Hz
Rated voltage:	1 x 230 V
Maximum current consumption:	0.32 .. 7 A
Enclosure class (IEC 34-5):	X4D
Insulation class (IEC 85):	F
Others:	
Energy (EEI):	0.17
Net weight:	35.1 kg
Gross weight:	37.3 kg
Shipping volume:	0.099 m ³
Danish VVS No.:	380963112
Swedish RSK No.:	5732515
Norwegian NRF no.:	9042709

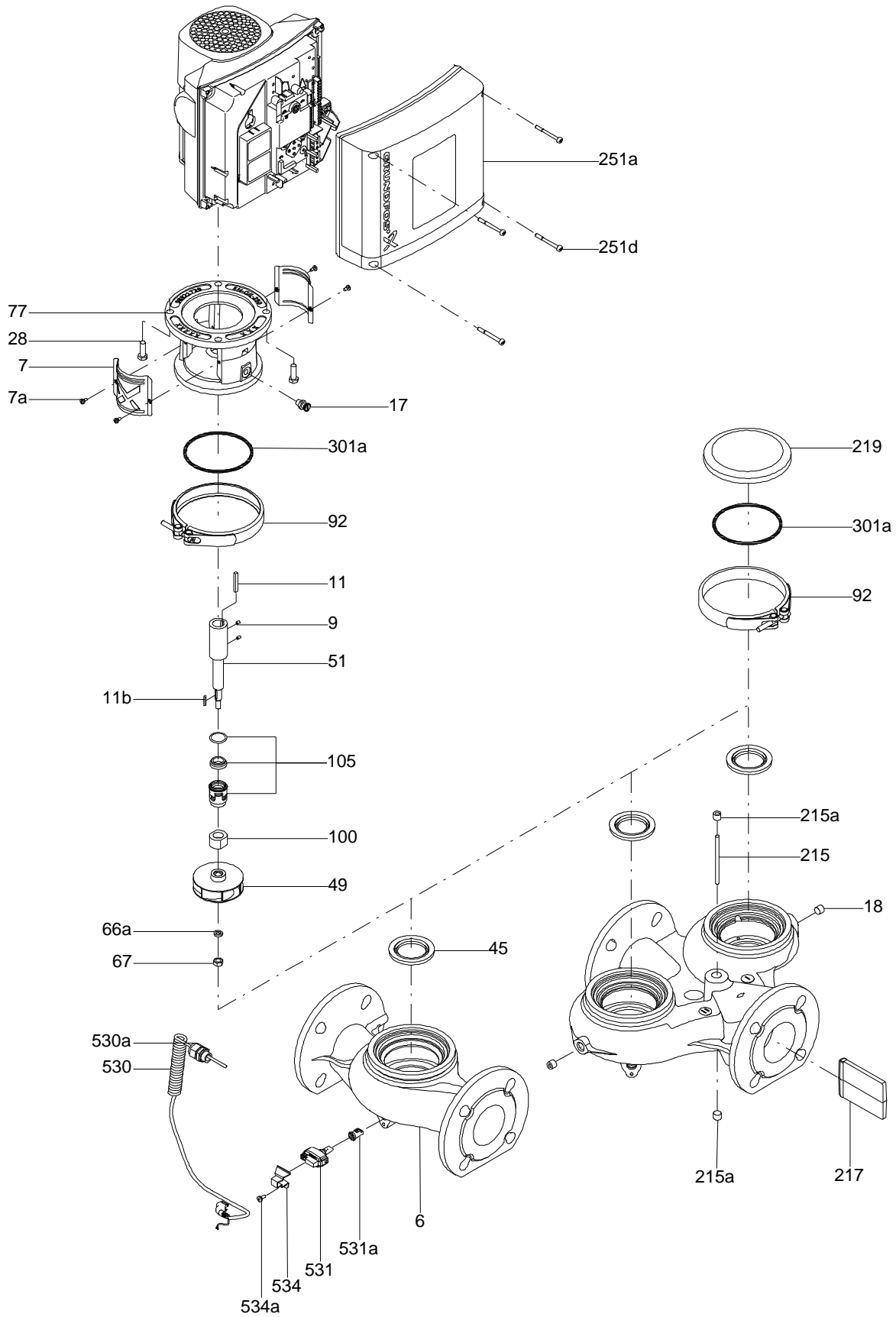


On request MAGNA3 100-120 F 50 Hz



Note! All units are in [mm] unless others are stated.
 Disclaimer: This simplified dimensional drawing does not show all details.

Exploded view

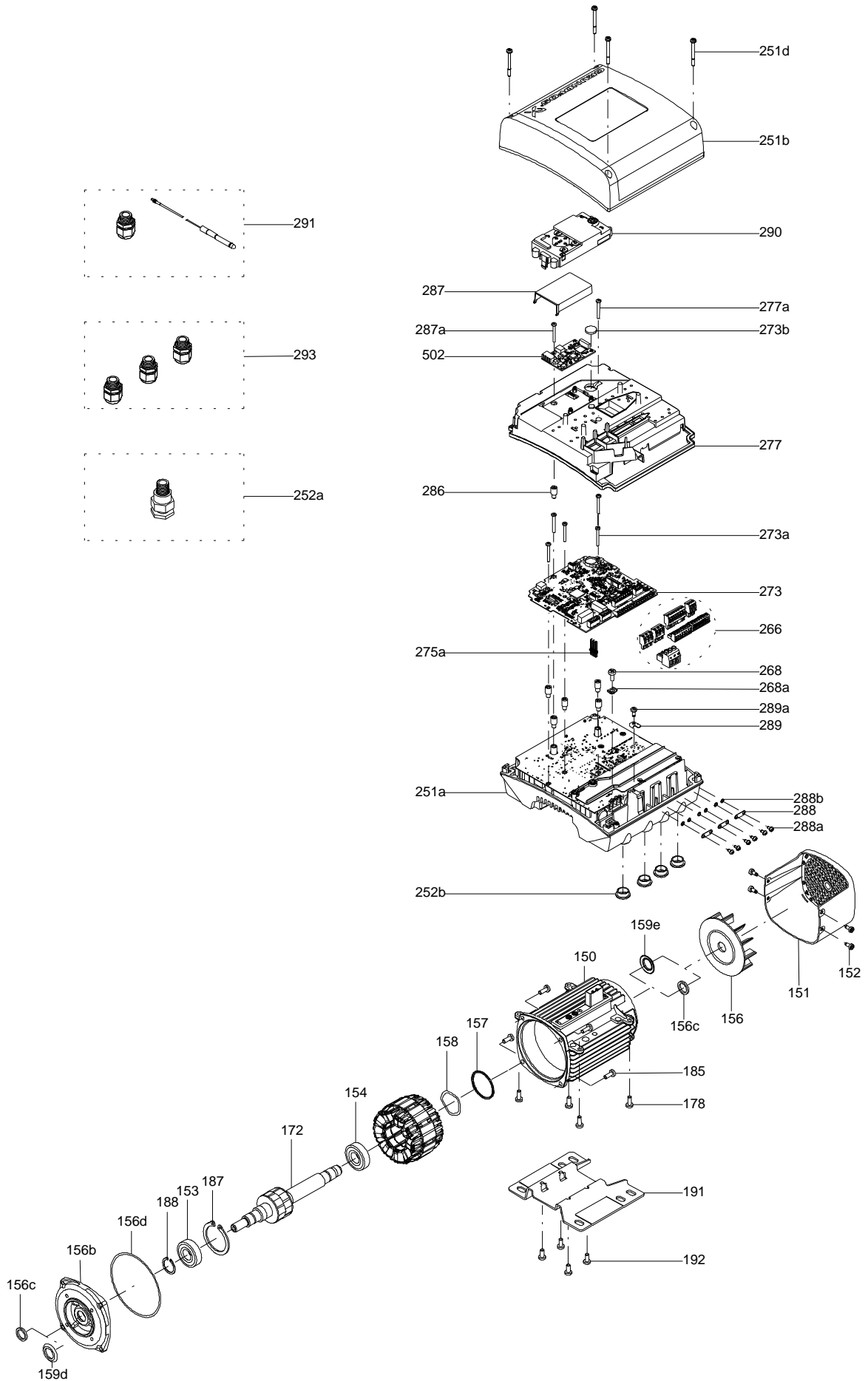


Sectional drawing (TM058200 for TPE2,TPE3)



TM058200

Exploded view (TM057026 for MGE model H/I)



Parts list MAGNA3 100-120 F, Product No. On request
Valid from 17.5.2012 (1220)

Pos	Description	Annotation	Données de classification	Référence	Quantité	Unité
-	Pump housing cpl.				1	pcs
6	Pump housing				1	
45	Neck ring cpl.				1	
92	Clamp cpl.				1	pcs
- 163	Control box				1	pcs
-	Control box				1	
	Spacer				1	
7a	Combi Slot Torx screw				1	
159	Controlboard Leaded				1	
159a	Cable w/plug				1	
159b	Connector plug 3-pole				1	
159b	Connector plug 3-pole				2	
159b	Connector plug 4-pole				1	
159c	Pan washer head screw				1	
159d	Board				1	
160	Spacer				1	
163b	Compression spring				4	
164	Cover				1	
164a	Screw DELTA PT				5	
273b	Battery				1	
501	Displayboard cpl.				1	
-	Control box				1	
	Box				1	
	Socket head cap screw				12	
166	Powerboard, Leaded				1	
166c	Socket head cap screw				1	
167	Cover				1	
167a	Pan head tapping screw				4	
192	Cooling paste				0	
163a	Pan head screw				2	pcs
163d	Pan head screw				1	pcs
301	Pump head				1	pcs
301b	Protector				1	pcs
450	Insulation				1	pcs
- 531	Sensor				1	pcs
531a	Seal cap				1	
534	Bracket				1	pcs
534a	Pan head thread forming screw				1	pcs

Disclaimer: The information about the Grundfos pump in this document may be outdated.

Data may be subject to alterations without further notice.

Please contact us to verify the data above is still accurate/up-to-date.

All information is copyright Grundfos.



info@lenntech.com

<https://www.lenntech.com>

tel. +31 152 610 900

fax. +31 152 616 289