

SPECIFICATIONS

CAPE ANNE™ TRIM ONLY SINGLE HANDLE PRESSURE BALANCE TUB & SHOWER FAUCET

Model

D500026T (Tub & Shower trim)
D500526T (Shower only trim)
D510426T (Tub only trim)

Description

- Eterno 1F showerhead D460024, 2.5GPM (9.5LPM) maximum flow rate @ 80 psi
- 6" brass showerarm
- Solid brass handle
- Diverter on spout
- Use with valve: D112000BT (w/ stops) or D115000BT (w/o stops) or D112500BT (w/ stops) or D115500BT (w/o stops)

Standards



- UPC/cUPC
- Energy Policy Act of 1992

MEETS ASME
A112.18.1M/ A112.18.1

- ASME A112.18.1M/ A112.18.1

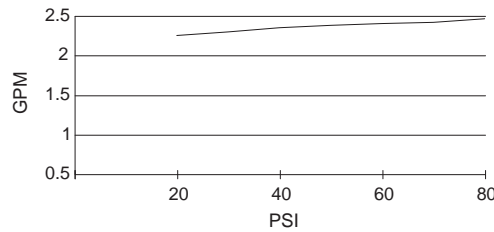


- ADA Accessibility Guidelines for Buildings and Facilities - 4.27.4 Controls and Mechanisms

Warranty

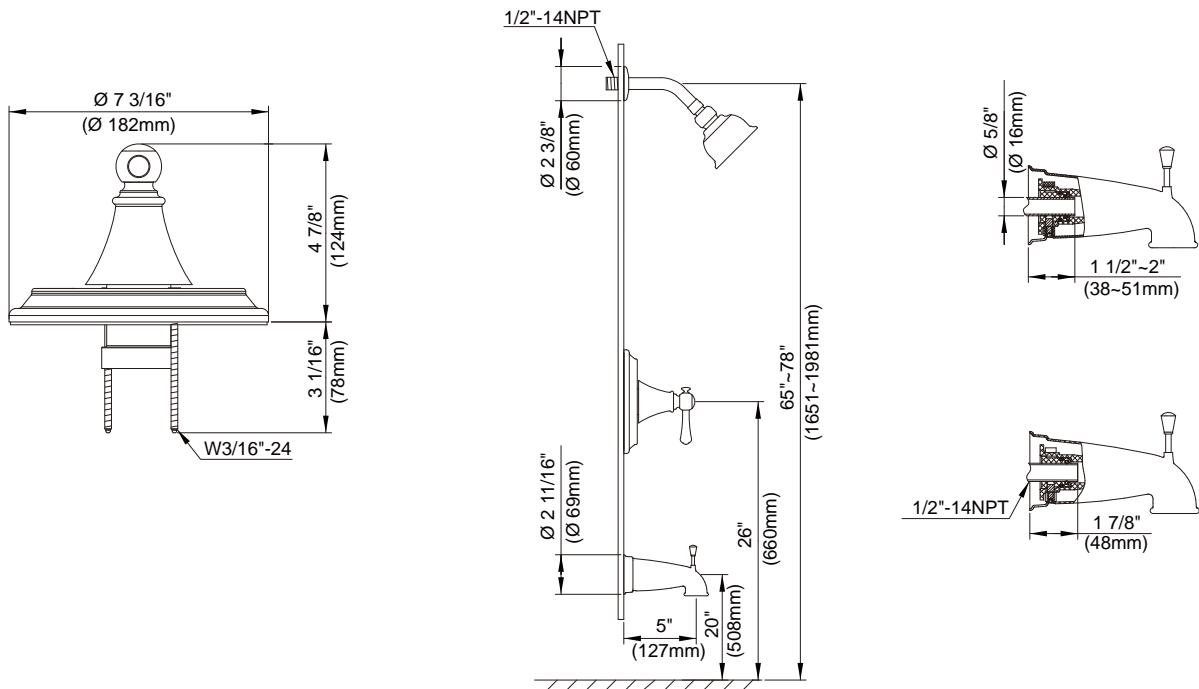
Danze products are covered by a manufacturer's limited "lifetime" warranty for manufacturing defects.

Flow Rate



Finishes Available

- Chrome
- Other: Refer to Price List for additional finish



Submittal Information:

Job Name: _____
Contractor: _____

Location: _____
Contact #: _____