

*American Standard*

CERAMIX™

## PRESSURE BALANCED BATH/SHOWER SETS

*Thank you for selecting American-Standard...the benchmark of fine quality for over 100 years.*

*To ensure that your installation proceeds smoothly—please read these instructions carefully before you begin.*

## Installation Instructions

**2000.500**  
**2000.501**  
**2000.502**

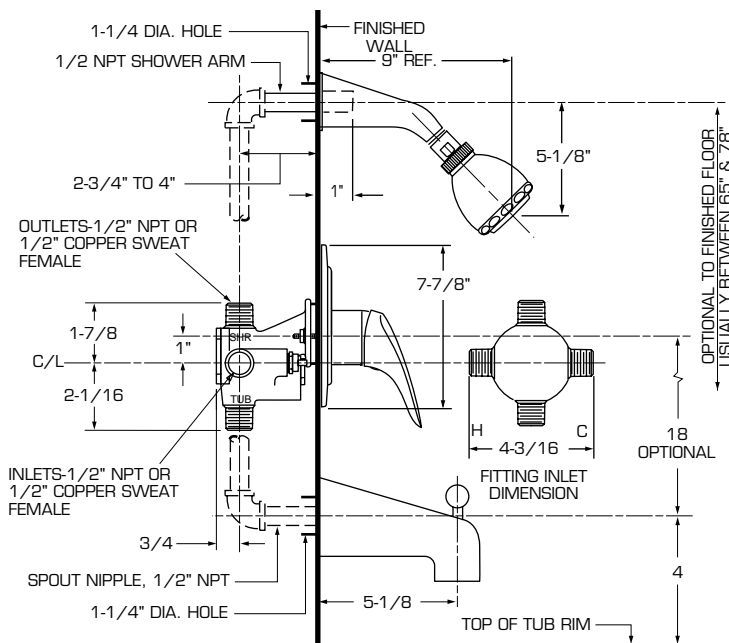


Certified to comply with ANSI A112.18.1

M968783A

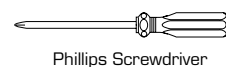
### ROUGHING-IN DIMENSIONS

TO ENSURE PROPER POSITIONING IN RELATION TO WALL, NOTE ROUGHING-IN DIMENSIONS.



NOTE: USE PLASTER GUARD FOR MIN. - MAX. \* DIMENSION AND PROPER WALL OPENING (SUPPLIED). NO CONCEALED PIPING FURNISHED.

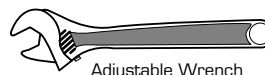
### Required Tools



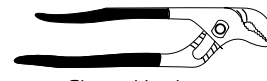
Phillips Screwdriver



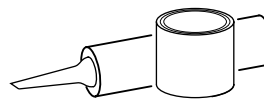
Flat Blade Screwdriver



Adjustable Wrench



Channel Locks



Plumbers' Putty or Caulking

### CARE INSTRUCTIONS:

**DO: SIMPLY RINSE THE PRODUCT CLEAN WITH CLEAR WATER. DRY WITH A SOFT COTTON FLANNEL CLOTH.**

**DO NOT: CLEAN THE PRODUCT WITH SOAPS, ACID, POLISH, ABRASIVES, HARSH CLEANERS, OR A CLOTH WITH A COARSE SURFACE.**

**1**

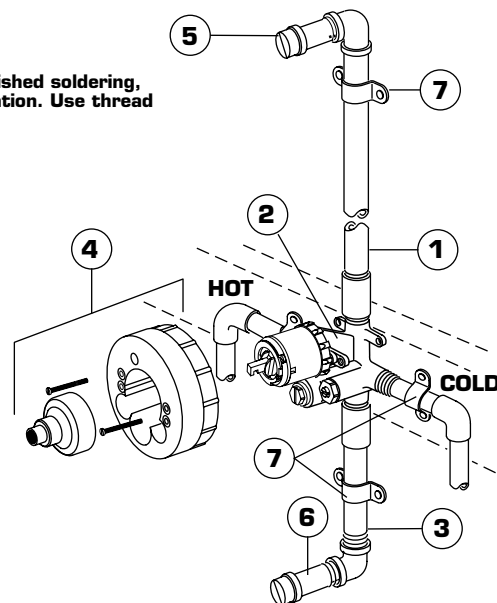
### ROUGHING-IN

### CAUTION

Turn off water at main supply.

**NOTE** When soldering, remove PLASTER GUARD, CARTRIDGES and CHECK STOPS. When finished soldering, flush valve body, replace cartridges, check stops and plaster guard to continue installation. Use thread sealant or Teflon tape on threaded connections.

- Refer to Roughing-in diagram above before starting.
- Connections are:
  - 1/2" male NPT for threaded inlets.
- Connect RISER PIPE (1) to VALVE BODY (2) top outlet marked "SHR".
- Connect TUB FILLER PIPE (3) at bottom outlet marked "TUB". For proper positioning the finished wall must be within side wall of PLASTER GUARD (4).
- Connect hot and cold water supplies.
- Cap off SHOWER PIPE (5) and TUB FILLER PIPE (6). For support, use PIPE BRACES (7) secured to wooden braces.
- With valve turned off, turn on water supplies. Check for leaks.



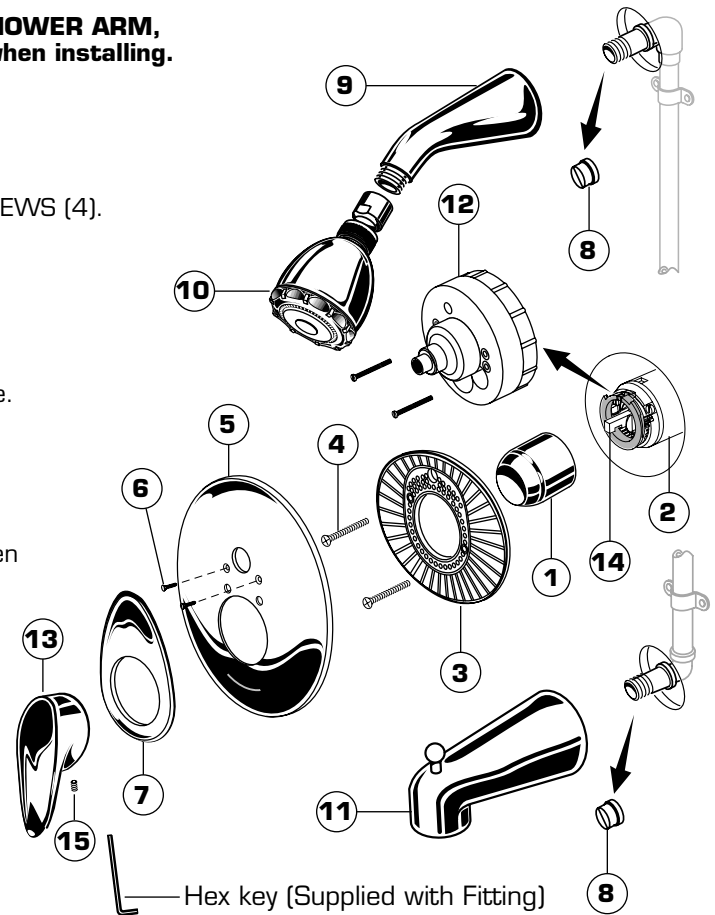
## 2

### INSTALL TRIM

**CAUTION: Protect the finish on SHOWER ARM, SHOWER HEAD and TUB SPOUT when installing.**

- Remove PLASTER GUARD (12).
- Push CAP (1) over VALVE CARTRIDGE (2).
- Mount ESCUTCHEON CARRIER (3) to valve body using SCREWS (4).
- Mount ESCUTCHEON (5) to ESCUTCHEON CARRIER (3) using SCREWS (6).
- Attach DECORATIVE RING (7) to ESCUTCHEON (5).
- Remove PIPE CAPS (8) from shower pipe and tub filler pipe.
- Install SHOWER ARM (9) and SHOWER HEAD (10).
- Install TUB FILLER SPOUT (11).
- Push HANDLE (13) onto CARTRIDGE STEM (14) and tighten SET SCREW (15) from below with Hex Key supplied.

**NOTE:** Lift HANDLE to access SET SCREW (15).



## 3

### TEST INSTALLED FITTING

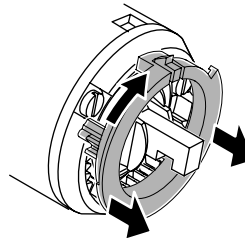
- With HANDLE in OFF position, turn on WATER SUPPLIES and check all connections for leaks.
- Operate HANDLE to flush water lines thoroughly.
- Operate SPOUT DIVERTER and SHOWER.

## 4

### ADJUST HOT LIMIT STOP

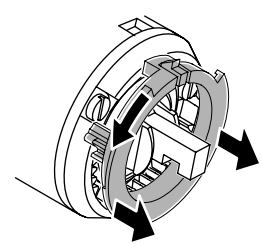
- By restricting handle rotation and limiting the amount of hot water allowed to mix with the cold, the HOT LIMIT SAFETY STOP reduces risk of accidental scalding. To set the maximum hot water temperature of your faucet, all you need to do is adjust the setting on the HOT LIMIT SAFETY STOP.
- Remove HANDLE, CAP and HOT LIMIT STOP. Follow "A" or "B" to adjust maximum discharge temperature.

**"A"**  
PRY UPWARD TO UNLOCK AND  
ROTATE CLOCKWISE.



**ADJUSTMENT WHEN  
WATER IS TOO COLD**

**"B"**  
PRY UPWARD TO UNLOCK AND  
ROTATE COUNTER-CLOCKWISE ONE CLICK.



**ADJUSTMENT WHEN  
WATER IS TOO HOT**

## 5

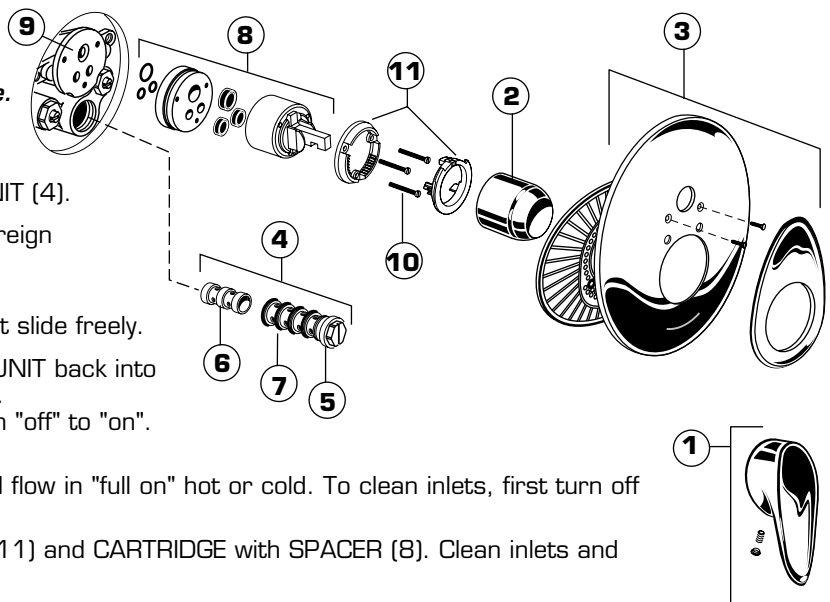
### SERVICE

*If valve is unable to maintain constant temperature.*

- Remove HANDLE (1), CAP (2) and ESCUTCHEON ASSEMBLY (3).
- Unscrew and remove PRESSURE BALANCING UNIT (4).
- Examine holes in SLEEVE (5) for chips or other foreign materials.
- Remove SPOOL (6) and clean thoroughly.
- Insert SPOOL (6) into SLEEVE (5), SPOOL (6) must slide freely.
- Make sure all O-RINGS (7) are in place. Replace UNIT back into VALVE. Turn on water supply and check for leaks.

*If faucet drips,* operate handle several times from "off" to "on". Do not apply excessive force.

- Clogged CARTRIDGE (8) inlets may cause reduced flow in "full on" hot or cold. To clean inlets, first turn off water supply, then:
- Remove HANDLE (1), CAP (2), HOT LIMIT STOP (11) and CARTRIDGE with SPACER (8). Clean inlets and MANIFOLD (9).
- Reassemble CARTRIDGE and SPACER (8), alternately tightening SCREWS (10). Replace HOT LIMIT STOP (11), CAP (2) and HANDLE (1). Check flow.



M968783A