

**Hi-Arc® Single-Lever Kitchen Faucet
Model LKE4122****FEATURES**

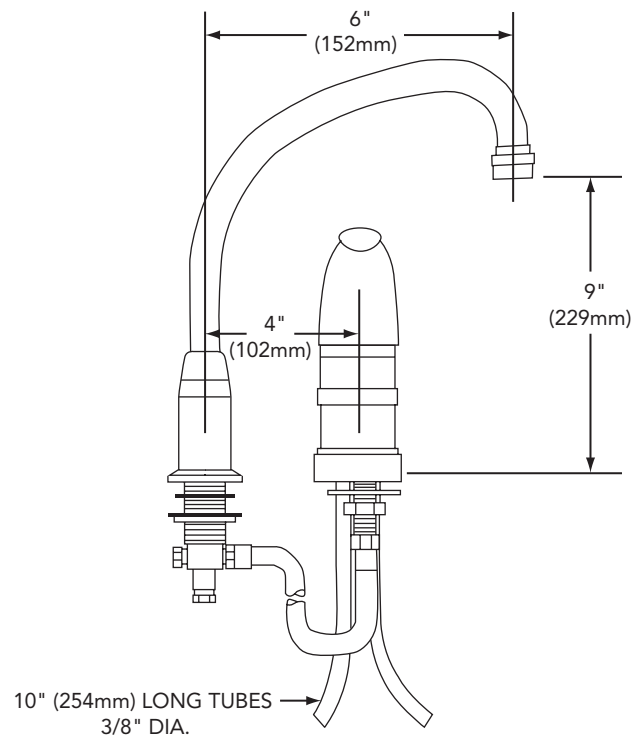
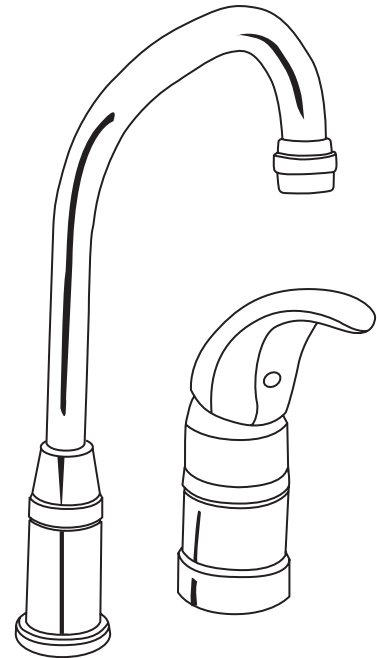
- Two hole, single- lever top mount kitchen faucet
 - Two 1-1/2" (38.8mm) diameter faucet holes required
 - Maximum counter top thickness is 1" (25.4mm)
- Temperature and flow controlled by one movement of the single-lever handle
- Tubular high-arc, 360° swing spout with restricted flow aerator and brass escutcheon
- Highly polished, chrome plated finish
- Removable cartridge
- 3/8" (10mm) O.D.; 10" (254mm) long; copper tube connections
- Ship Wt. 4-1/4 lbs. (1.9Kg)
- Maximum flow rate
 - 2.5 GPM/9.5 L/min at 80 P.S.I.G.
 - 2.2 GPM/8.3 L/min at 60 P.S.I.G.

WARRANTY

- Limited Lifetime

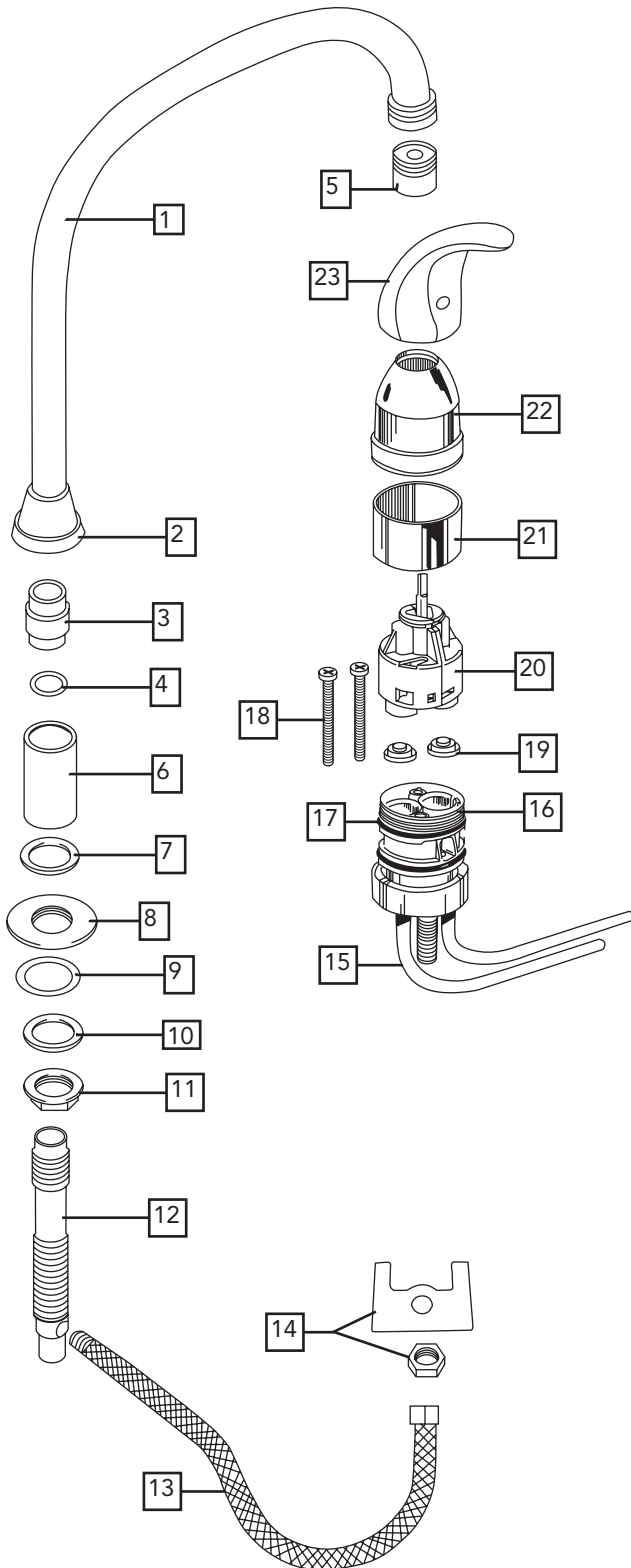
COMPLIES WITH:

- ADA
- ANSI/NSF61 - Certified
- ASME A112.18.1/CSA B125.1
- CA AB1953/VT S152



SEE OTHER SIDE FOR REPLACEMENT PARTS

**Hi-Arc® Single-Lever Kitchen Faucet
Model LKE4122**



ITEM	IND. PART	KIT PART	DESCRIPTION
1	N/A	A52722R	SPOUT ASSEMBLY
2	N/A		
3	N/A		
4	N/A		
5	P05101		
6	P02116	A52814R	ESCUTCHEON SLEEVE ASSEMBLY
7	P35168		
8	P02114	N/A	FLANGE
9	P37119	N/A	O-RING
10	P35174	N/A	WASHER
11	P02119	N/A	LOCKNUT
12	P47088	N/A	WATERWAY
13	P48017	N/A	HOSE
14	P35102	N/A	MOUNTING HARDWARE
15	P37122	N/A	O-RING
16	P47011	N/A	BASE
17	P47070	N/A	HOUSING
18	P36108	N/A	SCREW
19	A53226R	A52399R	CARTRIDGE ASSEMBLY
20	N/A		
21	P47063		
22	P47045	N/A	HUB
		N/A	DOME
23	N/A	A53080R	HANDLE ASSEMBLY