



# SERVICE PARTS LIST

**BULLETIN NO.**  
**55-40-0376**

<b>SPECIFY CATALOG NO. AND SERIAL NO. WHEN ORDERING PARTS</b>		REVISED BULLETIN 55-40-0375	DATE Nov. '98
<b>ORBITAL JIG SAW</b>			
<b>CATALOG NO.</b> 6266-51	<b>STARTING SERIAL NO.</b> 857B	WIRING INSTRUCTION <b>58-03-0335</b>	

00  
0

**EXAMPLE:**  
Component Parts  
(Small #) Are Included  
When Ordering The  
Assembly (Large #).

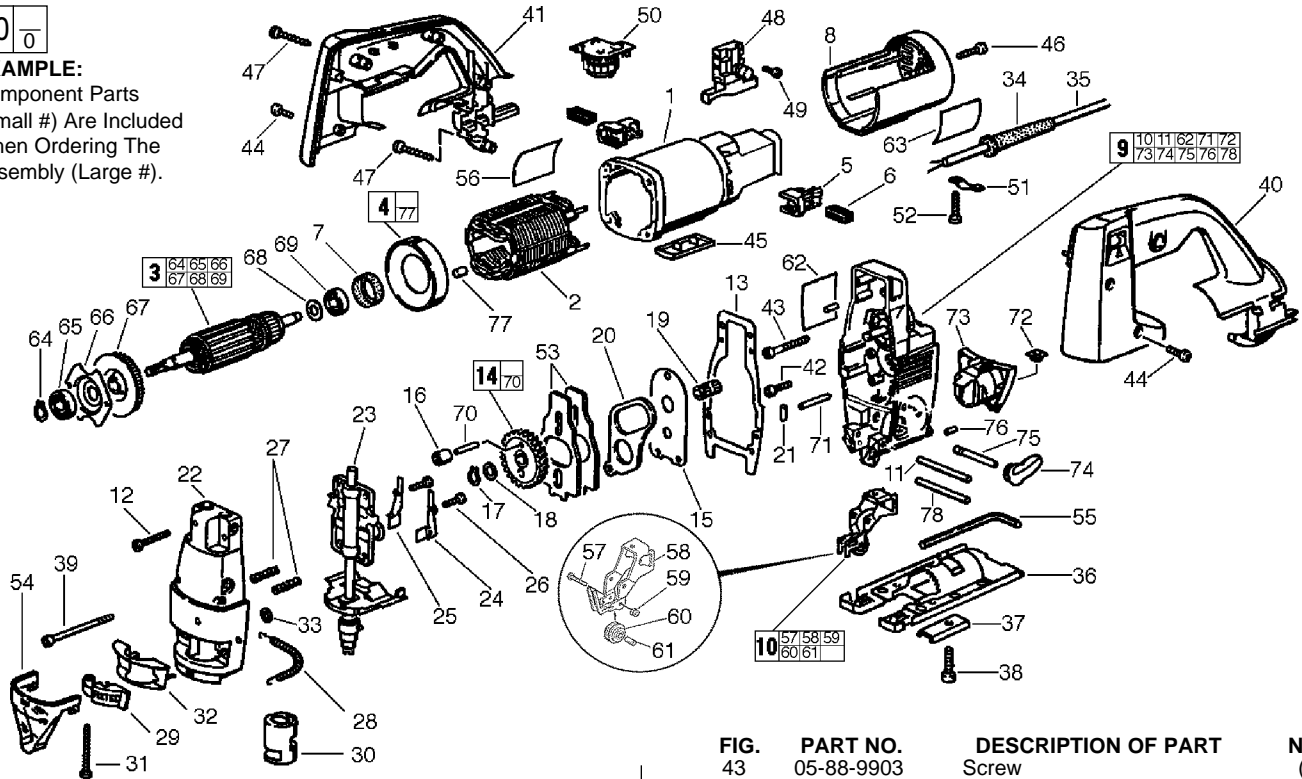


FIG.	PART NO.	DESCRIPTION OF PART	NO. REQ.
1	31-50-1230	Motor Housing	(1)
2	18-06-0110	230 Volt Field	(1)
3	16-06-0110	230 Volt Armature Assembly	(1)
4	31-05-0200	Air Deflector Plate	(1)
5	22-20-0870	Brush Holder	(2)
6	22-18-0861	Carbon Brush	(2)
7	45-22-0540	Rubber Sleeve	(1)
8	31-15-0480	Cover	(1)
9	14-30-0790	Gear Case Complete	(1)
10	42-36-1785	Support Bracket Complete	(1)
11	06-65-3735	Support Bracket Pin	(1)
12	05-88-9750	Screw	(2)
★ 13	43-44-1070	Gasket	(1)
14	32-30-0131	Gear Assembly	(1)
15	44-66-6165	Spacer Plate	(1)
16	02-50-9996	Needle Bearing	(1)
17	34-60-3670	Ring	(1)
18	45-88-8600	Washer	(1)
19	02-50-9990	Needle Bearing	(1)
20	42-09-0140	Rocker Arm	(1)
21	44-60-1420	Linkage Pin	(1)
22	14-38-0670	Gear Case Cover	(1)
23	38-50-6050	Spindle Assembly	(1)
24	42-68-1020	Left Clamp	(1)
25	42-68-1010	Right Clamp	(1)
26	05-88-9751	Screw	(2)
27	40-50-8790	Pressure Spring	(2)
28	40-50-8800	Tension Spring	(1)
29	44-10-0350	Blade Clamp Lever	(1)
30	45-22-0530	Index Sleeve	(1)
31	05-88-9752	Screw	(1)
32	45-03-0160	Screen	(1)
33	44-90-4390	Ring	(1)
34	44-76-0270	Cord Protector	(1)
35	22-64-0892	Cord	(1)
36	45-16-0630	Shoe	(1)
37	44-86-0580	Thrust Piece	(1)
38	05-74-0675	Screw	(1)
39	05-88-9901	Screw	(2)
40	31-44-1920	Left Handle Half	(1)
41	31-44-1930	Right Handle Half	(1)
42	05-88-9902	Screw	(2)

FIG.	PART NO.	DESCRIPTION OF PART	NO. REQ.
43	05-88-9903	Screw	(2)
44	05-88-9753	Screw	(4)
45	31-15-0490	Housing Cap	(1)
46	05-81-0925	Screw	(1)
47	05-88-9601	Screw	(4)
48	23-66-1010	Switch (Terminal Screws Not Included)	(1)
49	05-81-0932	Screw	(2)
50	14-20-0791	Speed Dial Assembly	(1)
51	31-17-0240	Cord Clamp	(1)
52	05-81-0930	Screw	(2)
53	42-87-0120	Counter Balance	(2)
54	45-12-0530	Front Shield	(1)
55	45-96-0075	Hex Key	(1)
56	12-25-1161	Nameplate	(1)
57	05-81-0935	Screw	(1)
58	42-36-1800	Support Bracket	(1)
59	05-55-0035	Nut	(1)
60	44-96-0175	Support Roller	(1)
61	42-40-1025	Bushing	(1)
62	10-15-9502	Instruction Label	(1)
63	10-15-9505	Logo Label	(1)
64	44-90-4405	Retaining Ring	(1)
65	02-04-1805	Ball Bearing	(1)
66	44-86-0205	Bearing Retainer	(1)
67	22-84-0930	Fan	(1)
68	45-88-1220	Washer	(1)
69	02-04-1800	Ball Bearing	(1)
70	44-60-1506	Pin	(1)
71	44-60-1510	Pin	(1)
72	05-55-0055	Nut	(1)
73	45-22-0060	Dust Sleeve	(1)
74	30-58-0060	Orbit Lever	(1)
75	36-10-0830	Cam Shaft	(1)
76	44-60-1500	Pin	(1)
77	45-30-0055	Slug	(2)
78	06-65-0560	Pin	(1)
	22-33-0440	Suppressor (Not Shown)	(1)

**FIG. LUBRICATION**  
9 3/4 oz. type "L" grease, No. 49-08-4170.

**MILWAUKEE ELECTRIC TOOL CORPORATION**  
13135 W. LISBON RD., BROOKFIELD, WI 53005