



# SERVICE PARTS LIST

**BULLETIN NO.  
54-12-1403**

SPECIFY CATALOG NO. AND SERIAL NO. WHEN ORDERING PARTS		REVISED BULLETIN 54-12-1402	DATE June '87
<b>SUPER HOLE-SHOOTER</b>			
<b>CATALOG NO. 2404-1</b>	STARTING SERIAL NO. 568-4300	WIRING INSTRUCTION <b>58-01-0940</b>	

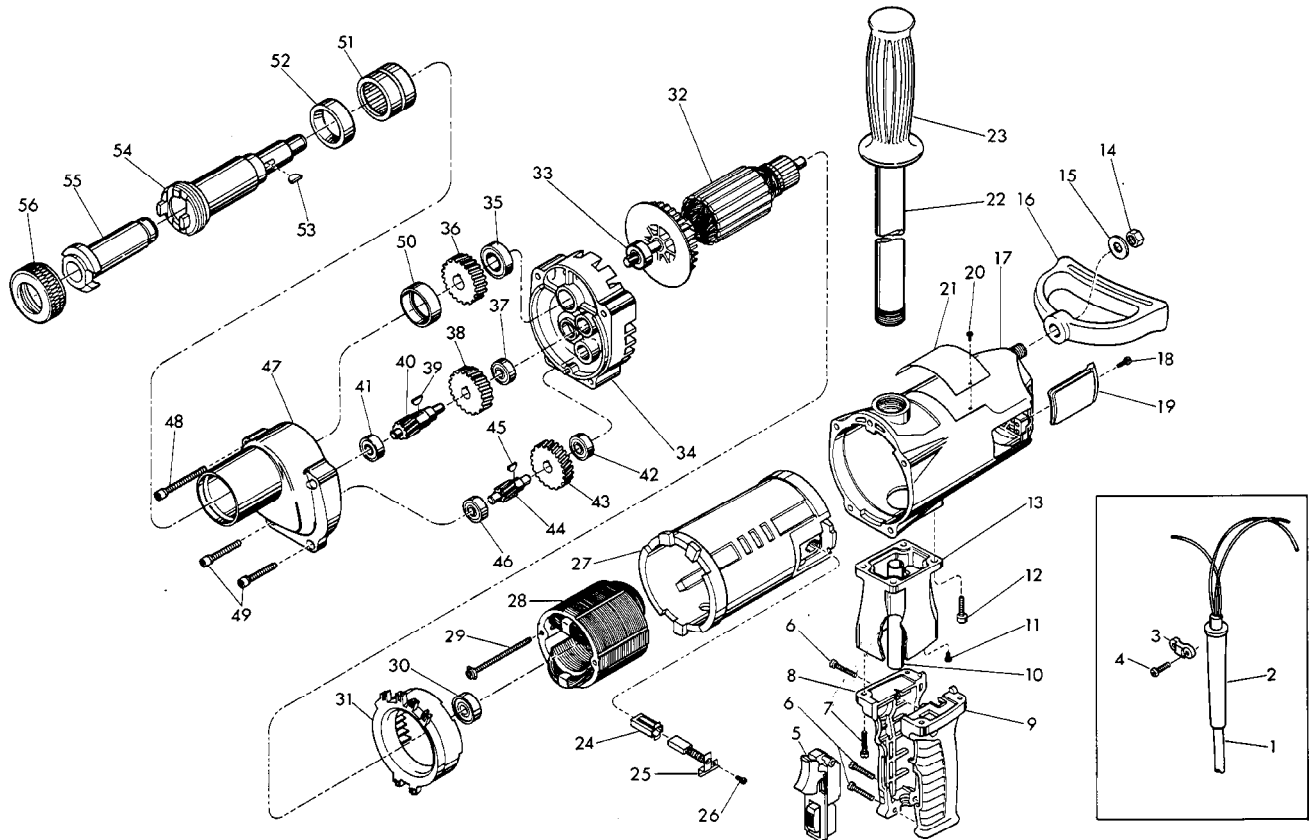


FIG. CAT. NO.	DESCRIPTION OF PART	NO. REQ.	FIG. CAT. NO.	DESCRIPTION OF PART	NO. REQ.
1	Cord Set	(1)	★ 31	42-14-0291 Baffle	(1)
★ 2	44-76-0140 Cord Protector	(1)	★ 32	16-70-0360 120 Volt Armature	(1)
3	31-17-0156 Cord Clamp	(1)	★	22-84-0790 Fan	(1)
★ 4	06-82-7270 8-16x5/8" Slotted Torx Plast. Screw	(2)	★ 33	02-04-1229 Ball Bearing	(1)
★ 5	23-66-1420 Switch	(1)	★ 34	14-13-0230 Diaphragm	(1)
6	06-82-7326 8-16x1" Slotted Torx Plast. Screw	(3)	★	06-65-1155 Pin	(1)
7	06-82-5358 12-24x3/4" Pan Hd. Taptite Screw	(4)	★ 35	02-04-1710 Ball Bearing	(1)
8	31-44-1440 Right Handle Half	(1)	36	32-75-1261 Spindle Gear	(1)
9	31-44-1445 Left Handle Half	(1)	★ 37	02-04-1022 Ball Bearing	(1)
★ 10	23-16-1440 Insulating Tub	(1)	38	32-44-1101 Intermediate Gear	(1)
★ 11	06-95-5200 8-32 x 5/16" Ground Screw	(1)	39	06-42-2000 Woodruff Key	(1)
★ 12	06-95-5645 1/4-20x3/4" Pan Hd. Taptite Screw	(4)	40	36-66-0571 Intermediate Shaft	(1)
★ 13	28-86-1611 Handle Spacer	(1)	41	02-04-1210 Ball Bearing	(1)
★ 14	06-55-2850 1/2 - 13 Hex Nut	(1)	42	02-04-0910 Ball Bearing	(1)
★ 15	45-88-7150 Thrust Washer	(1)	43	32-42-1201 Intermediate Gear	(1)
★ 16	31-44-1450 Spade Handle	(1)	44	36-66-0551 Intermediate Pinion Shaft	(1)
★ 17	28-50-6365 Motor Housing	(1)	45	06-42-1200 Woodruff Key	(1)
★	06-14-0010 1/2 x 13 x 1-3/8" Hex Hd. Bolt	(1)	46	02-04-0910 Ball Bearing	(1)
★ 18	06-82-7252 8-32x3/8" Slotted Pan Hd. Taptite Screw	(2)	47	28-14-1940 Gear Case	(1)
★ 19	22-32-0350 Brush Cover	(2)	★ 48	06-82-8550 1/4-20x3-1/8" Fil. Taptite Torx Sems	(2)
20	06-85-0200 Nameplate Screw	(2)	★ 49	06-82-8396 1/4-20x2-1/4" Fil. Taptite Torx Sems	(2)
★ 21	12-15-7010 Service Nameplate	(1)	50	42-24-0070 Thrust Bearing	(1)
★ 22	43-62-0121 Pipe Handle	(1)	51	02-50-9970 Needle Bearing	(1)
23	43-62-0246 Handle Grip	(1)	52	45-06-0380 Oil Seal	(1)
★ 24	22-20-0680 Brush Tube	(2)	53	06-42-2400 Woodruff Key	(1)
★ 25	22-18-0700 Carbon Brush Assembly	(2)	54	38-50-5460 Spindle	(1)
★ 26	06-82-8835 8-32 x 5/16" Pan Torx Sems	(2)	★ 55	45-34-0110 No. 3 Taper Socket	(1)
★ 27	23-16-1420 Insulated Housing	(1)	56	42-52-0050 Taper Socket Cap	(1)
★ 28	18-70-0310 120 Volt Field	(1)			
★ 29	06-82-9072 10-24x2-1/8" Pan Hd. Sems	(2)			
★ 30	02-04-1041 Ball Bearing	(1)			

**FIG. 12 NOTES**  
Tighten one screw until lockwasher is touching handle spacer. Tighten the diagonally opposite screw (70 - 80 lbs./in. on new motor housing) and then sequentially tighten the other screws.  
48 & 49 Apply Type 242 Blue Loctite.

**FIG. 47 LUBRICATION**  
7 - 3/4 oz. "E" Grease, No. 49-08-4121.