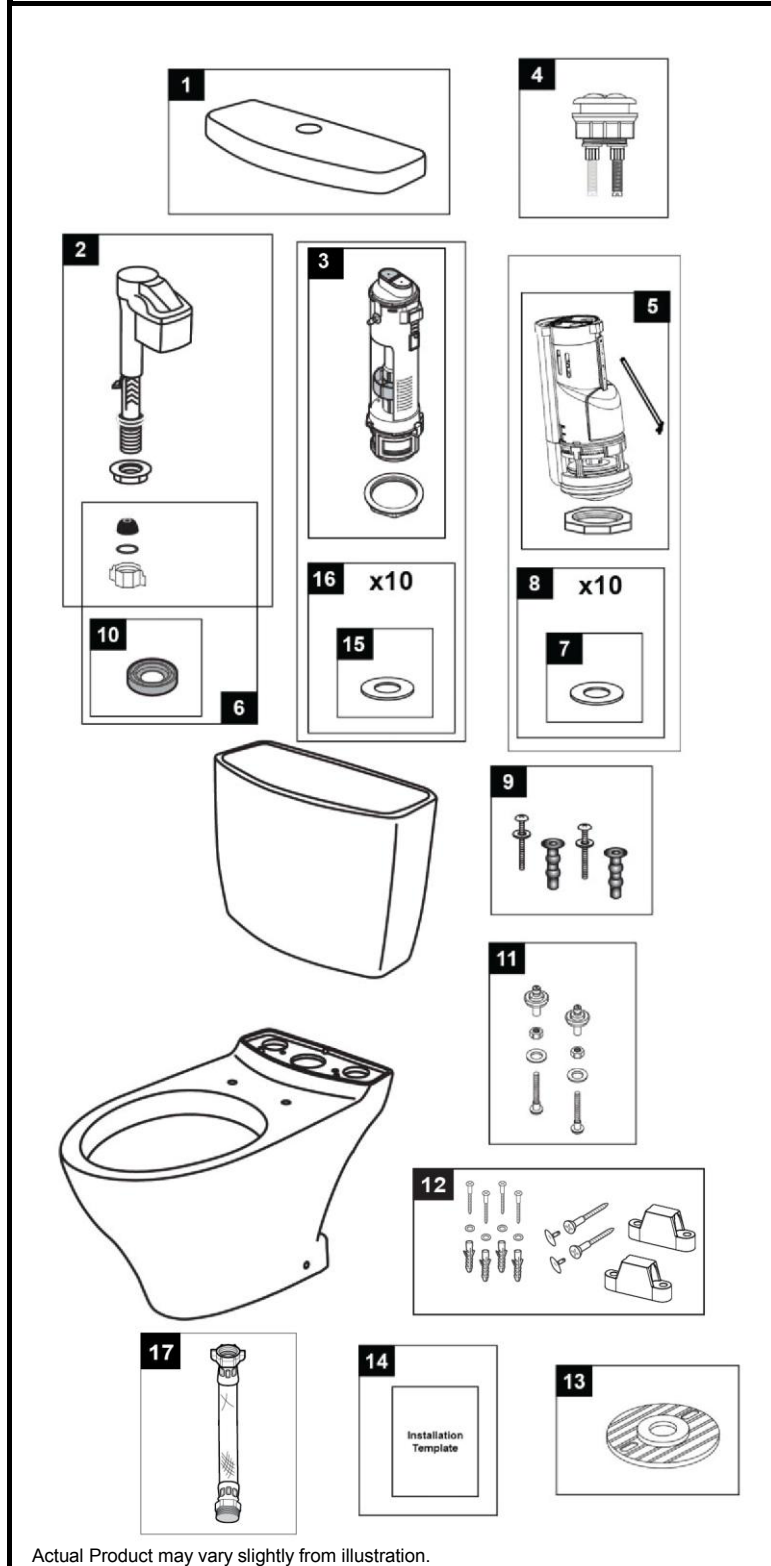


Aquia® II
1.6 & 0.9 Gpf Toilet, Elongated,
Dual Max®, 12" Rough-In

CST416M
CT416
ST416M



Item	Part	Description
1	TCU416CR#01	Tank Lid w/ Velcro Tape - Cotton
	TCU416CR#03	Tank Lid w/ Velcro Tape - Bone
	TCU416CR#11	Tank Lid w/ Velcro Tape - Colonial White
	TCU416CR#12	Tank Lid w/ Velcro Tape - Sedona Beige
	TCU416CR#51	Tank Lid w/ Velcro Tape - Ebony
2	TSU99A.X	Fill Valve
3	THU224	Flush Valve
4	THU314#01	Push Button Assembly - Cotton
	THU314#CP	Push Button Assembly - Chrome Plated
	THU314#BN	Push Button Assembly - Brushed Nickel
	THU314#PN	Push Button Assembly - Polished Nickel
5	THU435	Flush Valve
6	THU238	Parts Bag Assembly
7	9BU088E	Flush Valve Gasket (1 piece)
8	THU348	Flush Valve Gasket (10 pieces)
9	THU651N	Top Mounting Seat Hardware
10	9BU062E	Tank to Bowl Gasket
11	TS810DV3	Tank Top Mounting Kit
12	THU427#01	Toilet Mounting Hardware - Cotton & Colonial White
	THU427#03	Toilet Mounting Hardware - Bone
	THU427#12	Toilet Mounting Hardware - Sedona Beige
	THU427#51	Toilet Mounting Hardware - Ebony
13	THU291	Socket Rough In
14	0GU147-1	Installation Template
15	9BU102E	Flush Valve Gasket (1 piece)
16	THU227	Flush Valve Gasket (10 pieces)
17	THU9090R	Washlet Adapter Hose Kit (required for Washlet installation)

Note:

Items 7 and 8 are used with THU435 Flush Valve as shown.
Items 15 and 16 are used with THU224 Flush Valve as shown.

Product Number Explanations

<u>Two-Piece Toilet</u>	<u>Tank</u>	<u>Bowl</u>
(CST) Gravity Type Toilet	(ST) Tank	(CT) Bowl
(416) Model	(416) Model	(416) Model
(M) Dual Max®	(M) Dual Max®	