

## **4" Two Handle Bar Faucet**

# **Product Spec Sheet**



### **FEATURES & BENEFITS**

- This Product Contains Less Than 0.25% Weighted Average Lead Content On Wetted Surfaces
- Metal Lever Handles
- Ceramic Cartridges
- Max Flow Rate 2.2 GPM(8.5 LPM) at 60 PSI (ASME.A112.18.1)

PO-320C  
Chrome Finish

PO-320SS  
Stainless Steel Finish

### **APPROVALS:**

**Meets or Exceeds The Following:**

- \* ANSI/ASME A112.18.1
- \* ANSI/NSF 61 – Sec. 9
- \* IAPMO/UPC
- \* CA AB1953



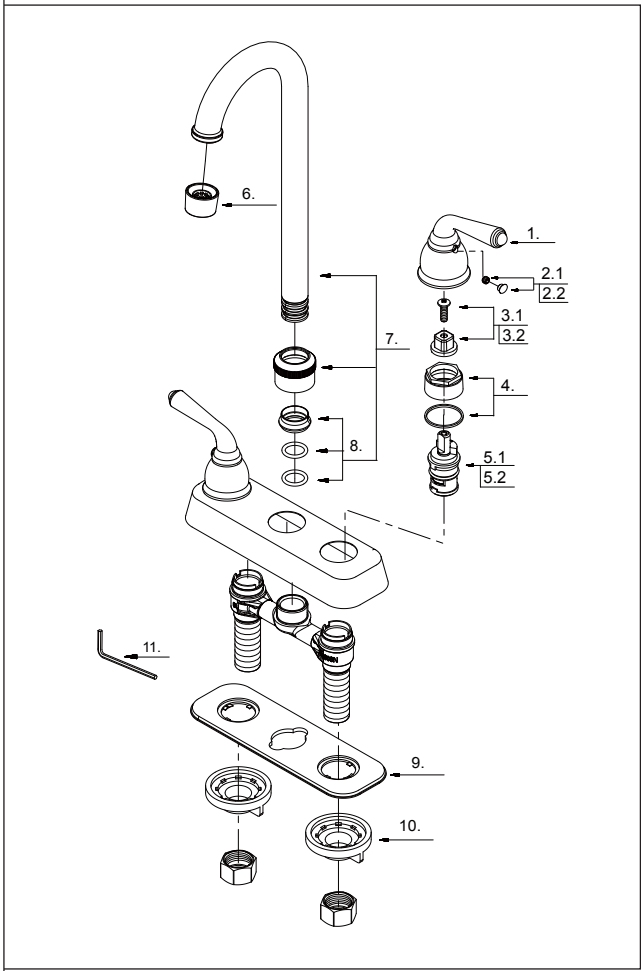
**CALIFORNIA:**  
**TEXAS:**  
**NEW YORK:**

**TEL: 866-532-8306**  
**TEL: 800-935-5456**  
**TEL: 800-431-2082**

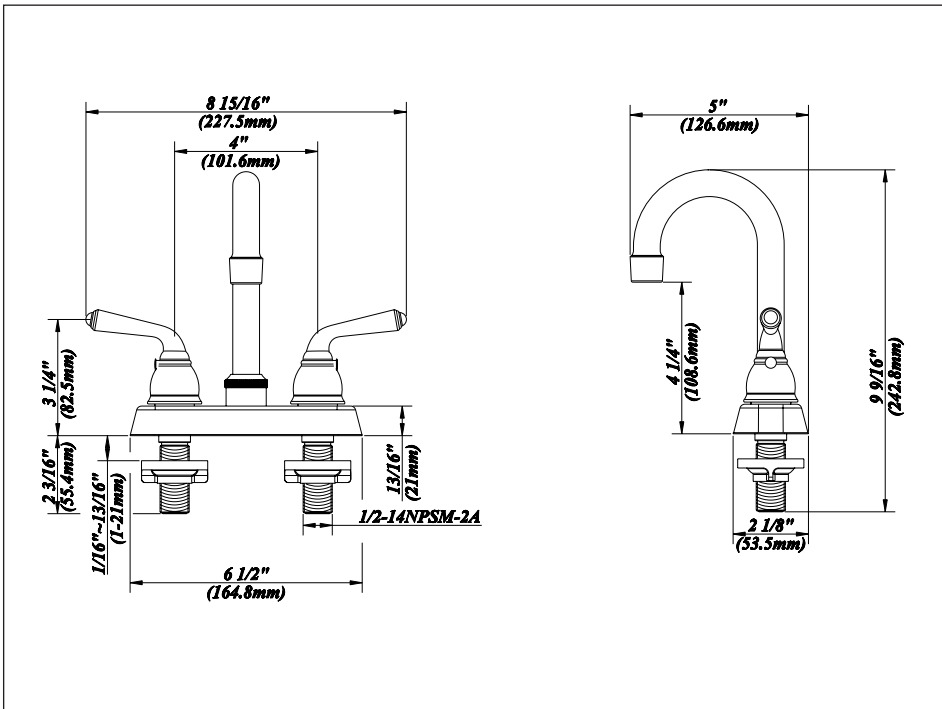
**FAX: 866-532-8307**  
**FAX: 800-683-4247**  
**FAX: 800-640-2252**

# 4" Two Handle Bar Faucet

No.	Name	Material
1	Metal Handle	Zinc Alloy
2.1	Index Button-Cold	Plastic
2.2	Index Button-Hot	Plastic
3.1	Handle Adaptor-Cold	Plastic
3.2	Handle Adaptor-Hot	Plastic
4	Retainer Nut & Washer	Brass
5.1	Ceramic Disc Cartridge-Cold	Ceramic & Brass
5.2	Ceramic Disc cartridge-Hot	Ceramic & Brass
6	Aerator	Plastic & Brass
7	Spout Assembly	Brass
8	Spout Seal Kit	Plastic
9	Putty Plate	Plastic
10	Lock Nut Set	Plastic
11	Hex Wrench (H2.5 * 19 mm L * 53 mm L)	Stainless Steel



**Product Spec Sheet**



**APPROVALS:**  
Meets or Exceeds The Following:

- \* ANSI/ASME A112.18.1
- \* ANSI/NSF 61 – Sec. 9
- \* IAPMO/UPC
- \* CA AB1953

CALIFORNIA: TEL: 866-532-8306 FAX: 866-532-8307  
 TEXAS: TEL: 800-935-5456 FAX: 800-683-4247  
 NEW YORK: TEL: 800-431-2082 FAX: 800-640-2252