

**PD-900C**

**PD-900BN**



## **Two Handle Roman Tub Faucet**

# Product Spec Sheet



### **FEATURES & BENEFITS**

- Metal Lever Handles
- Ceramic Cartridges
- Min Flow Rate 4.0 GPM(15.1 LPM) at 60 PSI (ASME.A112.18.1)

PD-900C  
Chrome Finish

PD-900BN  
Brushed Nickel Finish

#### **APPROVALS:**

**Meets or Exceeds The Following:**

- \* ANSI/ASME A112.18.1
- \* IAPMO/UPC



**CALIFORNIA:**  
**TEXAS:**  
**NEW YORK:**

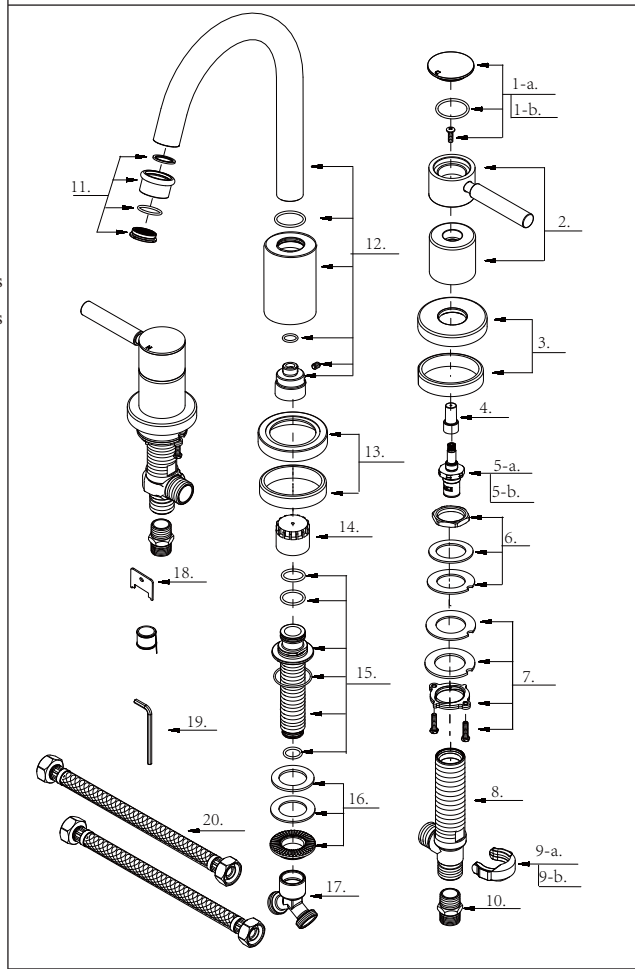
**TEL: 866-532-8306**  
**TEL: 800-935-5456**  
**TEL: 800-431-2082**

**FAX: 866-532-8307**  
**FAX: 800-683-4247**  
**FAX: 800-640-2252**

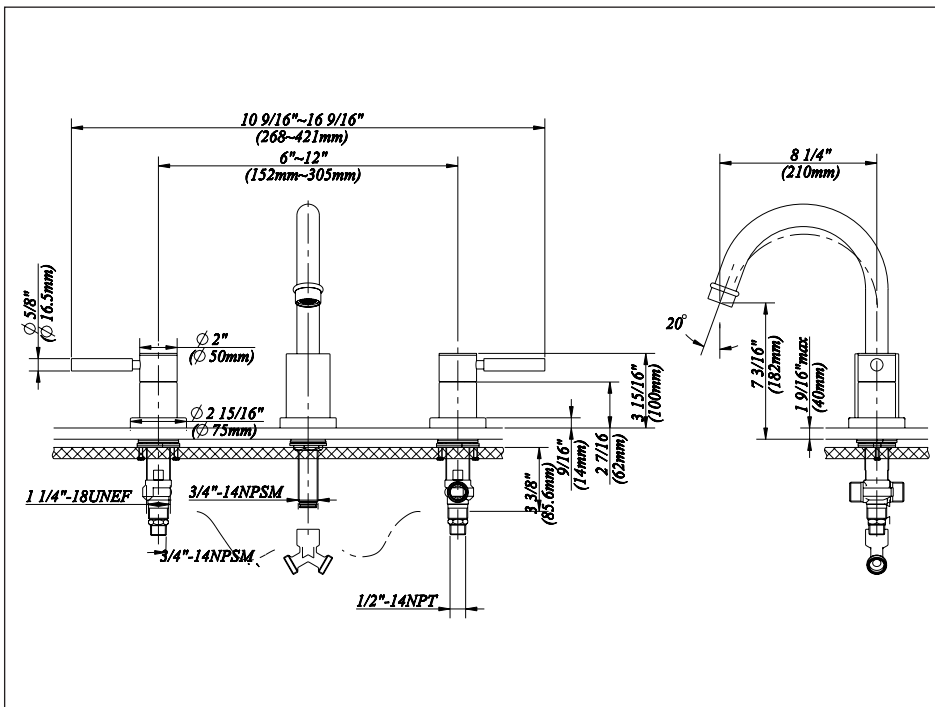
Visit Our Web Site : [www.matco-norca.com](http://www.matco-norca.com)

# Two Handle Roman Tub Faucet

No.	Name	Material
1-a	Index Button-Cold	Brass
1-b	Index Button-Hot	Brass
2	Metal Handle Assembly	Brass
3	Handle Trim Ring	Brass & Rubber
4	Rough In Cap	Brass
5-a	Ceramic Disc Cartridge-Cold	Ceramic & Brass
5-b	Ceramic Disc Cartridge-Hot	Ceramic & Brass
6	Mounting Hardware	Stainless Steel
7	Mounting Hardware Assembly	Stainless Steel
8	Handle Valve Body	Brass
9-a	Handle Valve Body Indicator Clip-Cold	Plastic
9-b	Handle Valve Body Indicator Clip-Hot	Plastic
10	Threaded Connector	Brass
11	Flow Straightener	Brass & Plastic
12	Spout Assembly	Brass
13	Spout Trim Ring	Brass & Plastic
14	Spout Rough In Cap	Plastic
15	Spout Body	Brass
16	Mounting Hardware	Brass & Rubber
17	"Y" Adaptor	Brass
18	Flow Straightener Wrench	Stainless Steel
19	Hex Wrench (H3.18 *20 mm L * 90 mm L)	Stainless Steel
20	Supply Hose	Stainless Steel



**Product Spec Sheet**



**APPROVALS:**

Meets or Exceeds The Following:

- \* ANSI/ASME A112.18.1
- \* IAPMO/UPC

**CALIFORNIA:** TEL: 866-532-8306 FAX: 866-532-8307  
**TEXAS:** TEL: 800-935-5456 FAX: 800-683-4247  
**NEW YORK:** TEL: 800-431-2082 FAX: 800-640-2252