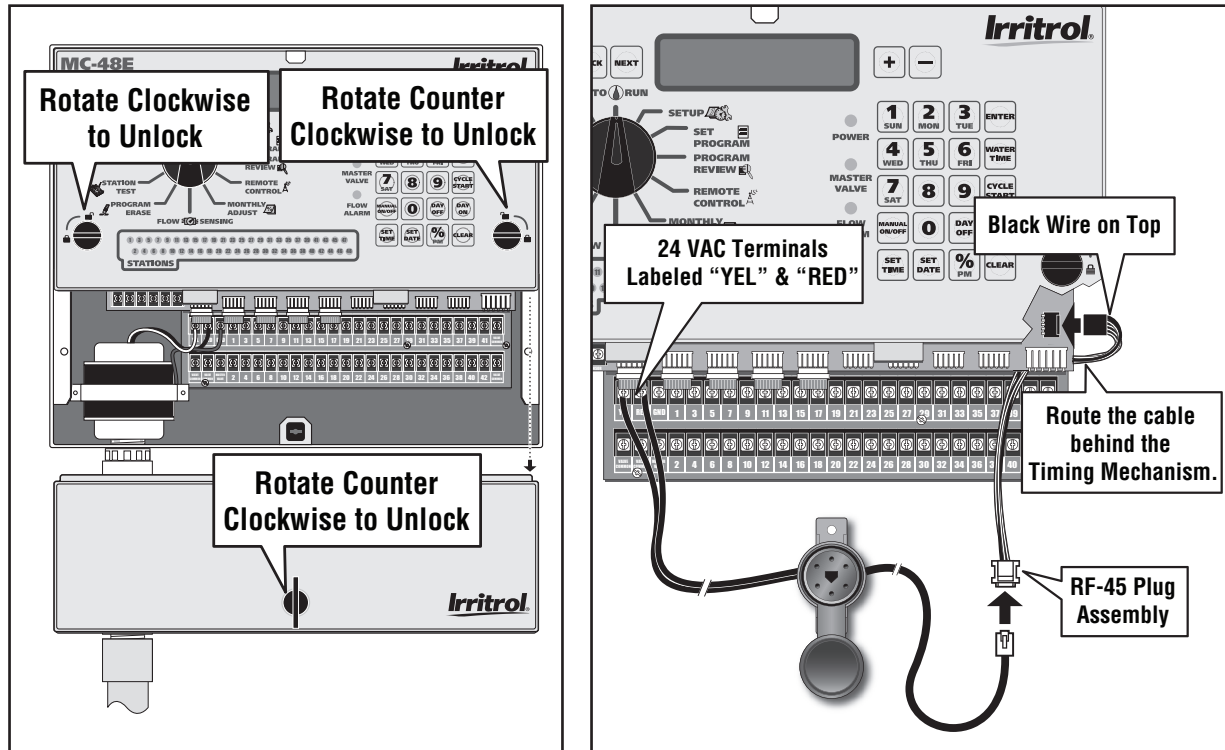


CMR-Kit Installation – MC-E Controller

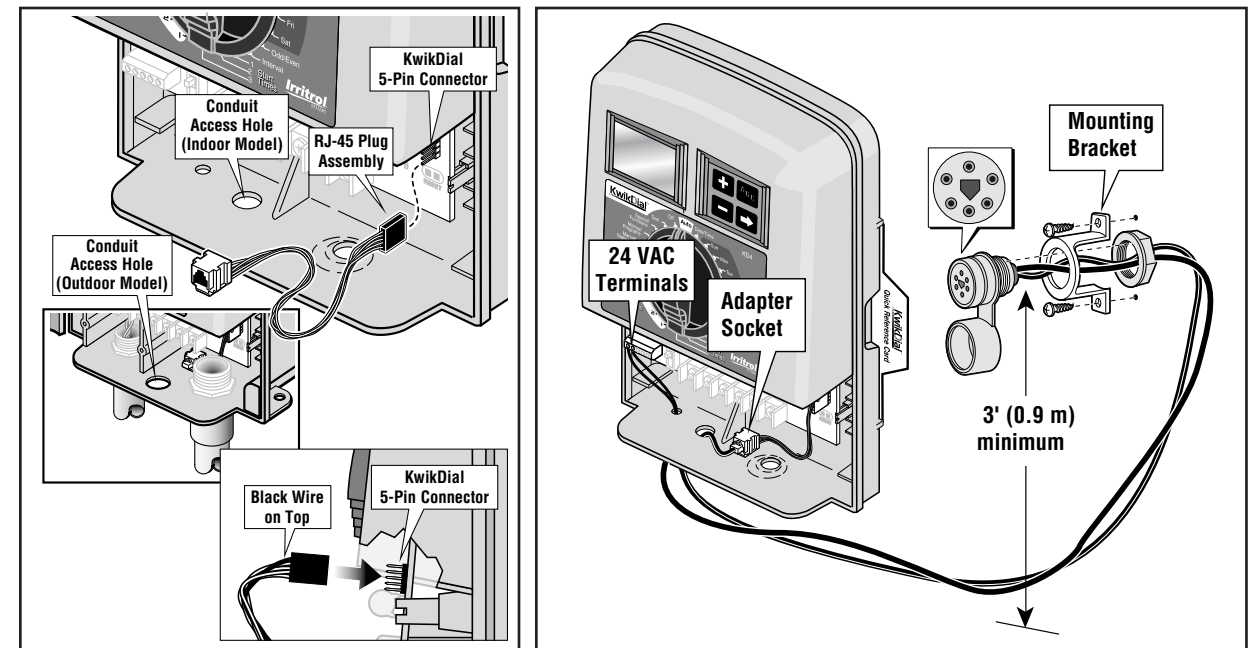
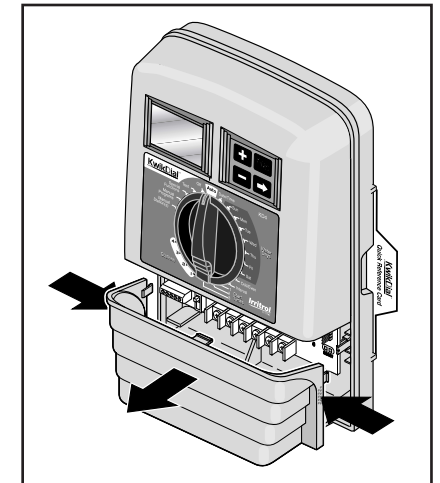
- Step – 1 Open the MC-E cabinet door and remove the lower panel door to access the terminal board.
- Step – 2 Unlock the timing mechanism to access the 5-pin remote connector. Carefully lift the timing mechanism to access the circuit board at the rear.
- Step – 3 Locate the 5-pin connector at the lower right side of the timing mechanism board. The 5-pin connector is accessed from the side and not to be confused with the much larger 6-pin connector that is accessed from the bottom. Connect the adapter cable to the 5-pin connector with the black wire in the uppermost position.
- Step – 4 Carefully route the cable downwards and behind the timing mechanism. Reinstall the timing mechanism without pinching the cable assembly.
- Step – 5 Route the two CMR-CC cables into the controller. Without disturbing any of the existing wires, connect the power wires to the terminals labeled **YEL** and **RED**. Wire polarity is unimportant in this application.
- Step – 6 Connect the RJ-45 plug into the adapter socket. The MC-E controller is now remote ready. Connect the remote receiver to the CMR-CC.



Irritrol Contractor Maintenance Remote (CMR-Kit) Controller Compatibility Guide

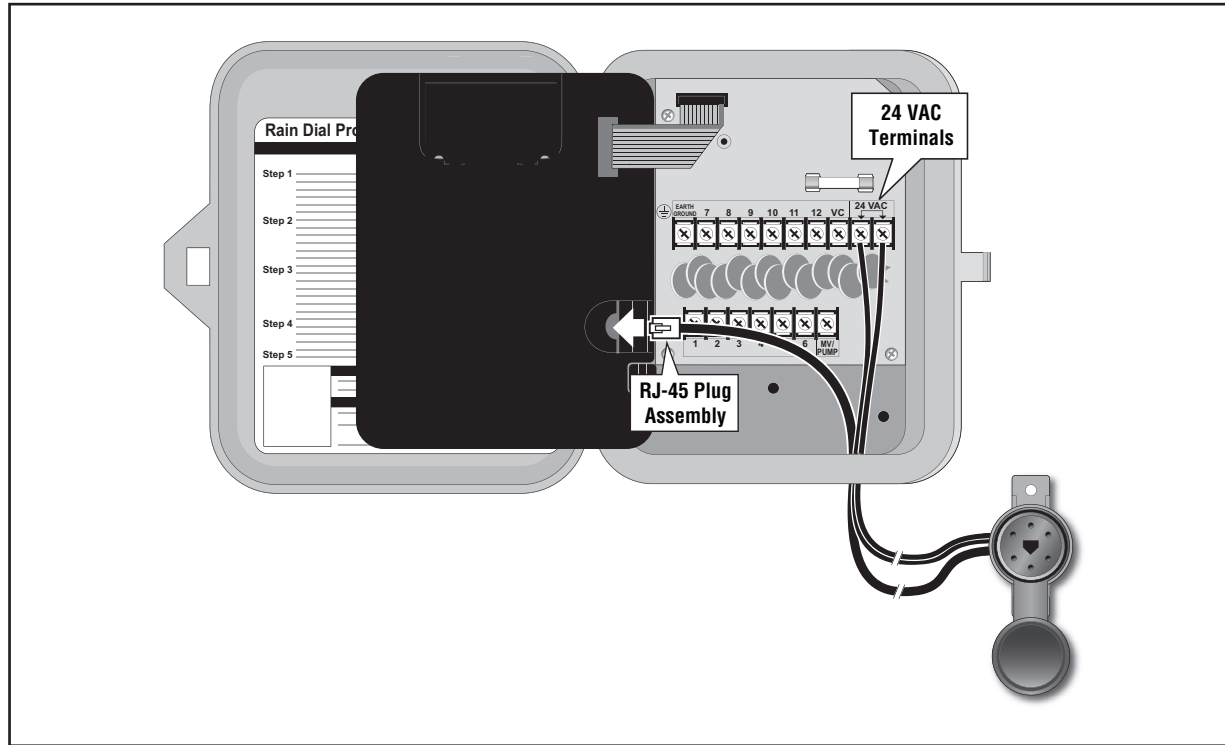
CMR-Kit Installation – KwikDial™

- Step – 1 Remove the bottom panel door to access the terminal board.
- Step – 2 Locate the 5-pin connector above the terminal block on the bottom right corner of the board. Plug in the cable adaptor and make sure to orient the cable so the black wire is on top.
- Step – 3 Route the CMR-CC cables into the controller. Without disturbing any of the existing wires, connect the power wires to the terminals labeled **24 VAC**. Wire polarity is unimportant in this application.
- Step – 4 Connect the RJ-45 plug into the cable adapter socket.



CMR-Kit Installation – Rain Dial® (New Model, Blue Front Panel) Controller

- Step – 1 Open the Rain Dial's cabinet door and swing open the timing mechanism to access the terminal board.
- Step – 2 Route the two CMR-CC cables into the controller. Without disturbing any of the existing wires, connect the power wires to the **24 VAC** terminals. Wire polarity is unimportant in this application.
- Step – 3 Connect the RJ-45 plug into the controller's cable socket located at the back on the timing mechanism. The new Rain Dial controller is now remote ready. Connect the remote receiver to the CMR-CC*.

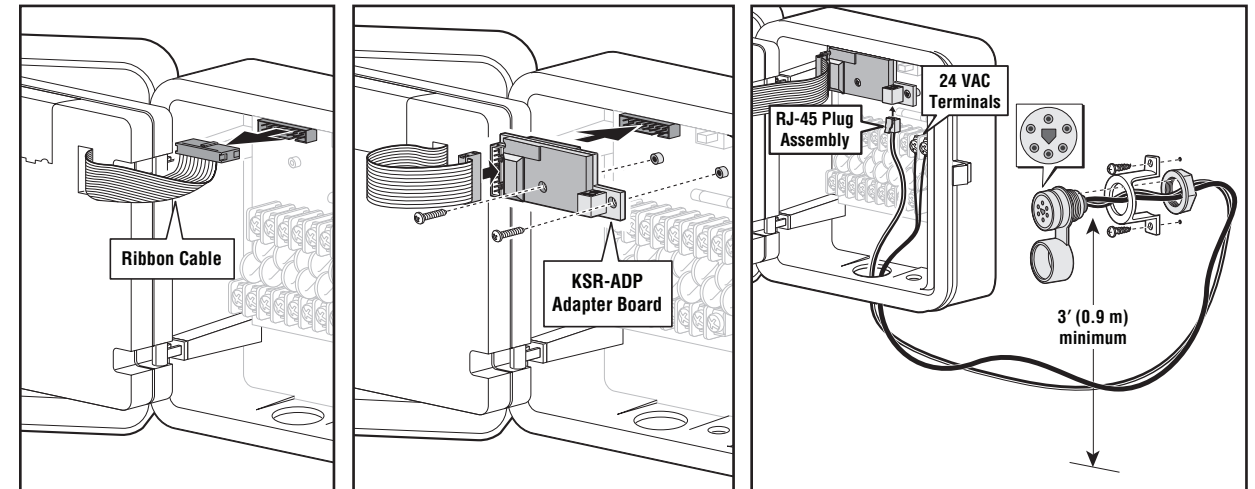


* If you need extra connectors for permanent mounting, the CMR-CC connector and cable assemblies are available separately through your Irritrol distributor.

CMR-Kit Installation – Rain Dial® PLUS

⚠ IMPORTANT! Only Rain Dial Plus with date code (located inside the battery compartment) 10/04/2000 (100400) or newer are compatible with the CMR remote kit. Rain Dial Plus controllers will need the KSR-ADP adapter board (available separately) to connect the CMR-Kit.

- Step – 1 Open the controller's cabinet door and swing open the timing mechanism to access the terminal board.
- Step – 2 Carefully disconnect the ribbon cable from the terminal board.
- Step – 3 Connect the ribbon cable to the KSR-ADP adapter board. Push the connector firmly to the adapter socket to properly secure it.
- Step – 4 Secure the adapter board to the terminal board's ribbon cable socket. To permanently mount the adapter board, secure it to the terminal board with the provided screws.
- Step – 5 Route the two CMR-CC cables into the controller. Without disturbing any of the existing wires, connect the power wires to the **24 VAC** terminals. Wire polarity is unimportant in this application.
- Step – 6 Connect the RJ-45 plug into the adapter board's adapter socket. The Rain Dial Plus controller is now remote ready. Connect the remote receiver to the CMR-CC*.



* If you need extra connectors for permanent mounting, the CMR-CC connector and cable assemblies are available separately through your Irritrol distributor.