

NAT.
GAS
& LP

10
YEAR
LIMITED
WARRANTY



COZY

HI-EFFICIENT DIRECT-VENT WALL FURNACE

Cozy High-Efficient Direct Vent Furnaces are a perfect heating solution for single-family residential, rental, vacation homes, apartment and below grade heating applications. They mount easily on any outside wall or, if vent extensions are used, on inside walls for central placement within the living space. The sealed combustion chamber draws air for combustion from outside and exhausts through a concentric vent-pipe system to the outside - retaining heat and maintaining interior air quality. The 24 volt, draft induced units include a standard vent kit that can be cut to fit wall thicknesses from 5"- 32" and includes an external vent cap which eliminates the need for expensive venting and unnecessary labor. Enjoy 80+% AFUE efficiency by selecting a High-Efficient Direct Vent Furnace from Cozy, the trusted name in zone heating.



Cozy Heating Systems LLC
phone - 502.589.5380
fax - 502.589.5382
www.cozyheaters.com



Made in the USA

HI - EFFICIENT DIRECT - VENT WALL FURNACE

COZY

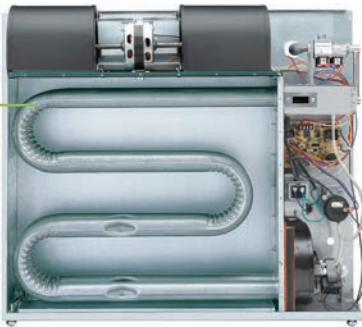


Model #	HEDV253A	HEDV403A
Type Gas	Natural*	Natural*
BTU Input / Hr	25,000	40,000
Dimensions (W x D x H)	24 1/2" x 9 3/4"*** x 32 1/4"	34 5/8" x 9 3/4"*** x 30 1/2"
Weight	100 lbs	125 lbs
Type Control	24 Volt	24 Volt
Amps	1.88	2.18
CFM	200	500
Center Vent to Floor	12 1/2" adj.	12 1/2" adj.
Gas Connection	3/8"	3/8"
AFUE	80%	80.1%
LP Conversion Kit #	49615	49613

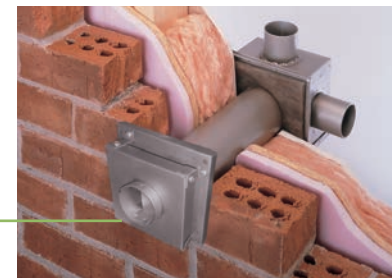
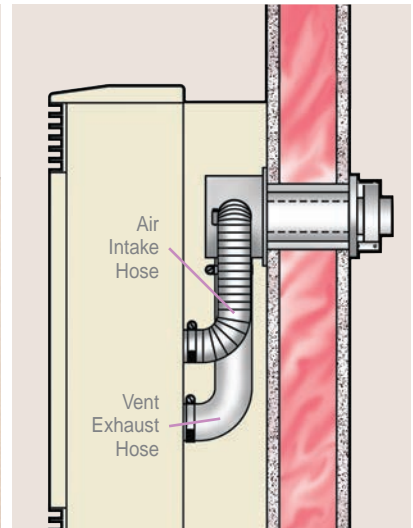
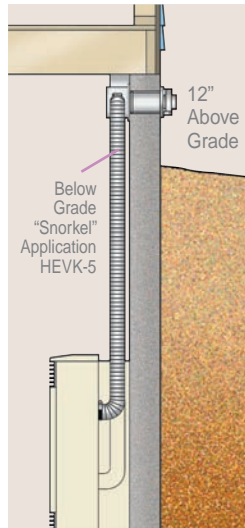
*Propane conversion kits available. Specify altitude if other than 2,000 ft elevation.

**Dimensions do not include 5" Trim Kit. Total Depth = 14-3/4"

Tubular Aluminized Heat Exchanger enhances efficiencies and carries a 10 year warranty with no pro rata.



Optional HEVK-5 Vent Exhaust Kit - Includes one 6' Black Flex Intake Pipe, one 5' Flocked Exhaust Tube, two 3" Couplings, three Support Brackets, three 2" Hose Clamps. (Note: 15' maximum with three vent exhaust kits).



Standard Above Grade Vent Kit - Can be cut to fit 5" to 32" wall thickness. Diameter of wall opening is only 3-1/2".



Optional HEVE-5 Vent Enclosure Kit Includes one (1) 5' Enclosure body, (1) End Cap, (1) 24" Section Flexible Trim Strip.

Other Optional Accessories:

HEEL-1 90° ELBOW KIT - Contains one 90°, 2-inch aluminized, silicon wrapped steel elbow. (Note: May not use more than three on any unit installation - one comes with the unit).