



# TurboTorch®

## Professional

# DELUXE PORTABLE TORCH KIT

*The Choice for Plumbing and HVAC Professionals*

### KIT INCLUDES:

- Durable Tool Bag
- Self Lighting PL-3T Tip
- Ergonomic Torch Handle
- STK-R Regulator (CGA-600)
- 12 ft. Hose
- Hose Clamp

### BONUS ITEMS:

- PL-4T Tip
- PL-812 Heat Shield
- Viper SX Solder



COMFORTABLE  
CARRYING HANDLE

EASILY STORE  
2 GAS CYLINDERS  
GAS CYLINDERS NOT INCLUDED

EASY STORAGE  
OF GAS HOSE

MULTIPLE  
STORAGE POCKETS

METAL SLEEVE FOR  
HOT TIP STORAGE

ADJUSTABLE  
SHOULDER STRAP

**BEFORE**



**AFTER**



Model #: PL-DLXPT Kit  
P/N: 0386-1397





# TurboTorch®

## Professional

**Maximize your work range with a wide variety of TurboTorch Accessory Tips**

TIP NO.	TIP SIZE		AIR PROPANE	AIR MAP//Pro™	COPPER TUBING SIZE CAPACITY PROPANE GAS				COPPER TUBING SIZE CAPACITY MAP//Pro™ GAS				REPLACEMENT		BTU
	IN.	MM	@24 PSI LBS/HR	@42 PSI LBS/HR	SOFT SOLDER		SILVER BRAZE		SOFT SOLDER		SILVER BRAZE		ORIFICE MODEL	TIP ENDS	
			IN.	MM.	IN.	MM	IN.	MM	IN.	MM					
PL-3T	3/8	9.5	.33	.46	1/4 - 1	6 - 25	1/8 - 1/2	3 - 10	1/4 - 1 1/2	10 - 40	1/4 - 1/2	6 - 15	OR-T-3	3T-TE	1,300
PL-4T	7/16	11.1	.52	.69	1/4 - 1 1/2	10 - 40	1/4 - 3/4	6 - 15	1/4 - 2 1/2	10-60	1/4 - 1 1/4	6 - 35	OR-PL4T	4T-TE	1,400
PL-5T	5/8	15.9	.71	1.41	1 1/2 - 2 1/2	40 - 60	1/2 - 1 1/4	15 - 35	1 - 4	25 - 100	1/2 - 2	15-50	OR-PL5T	5T-TE	2,000



**PL-3T**  
0386-0821

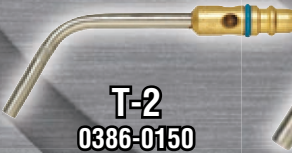


**PL-4T**  
0386-0822

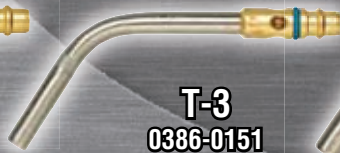


**PL-5T**  
0386-0823

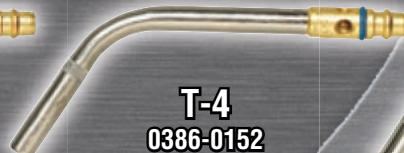
TIP NO.	TIP SIZE		GAS FLOW		COPPER TUBING SIZE CAPACITY PROPANE GAS				COPPER TUBING SIZE CAPACITY MAP//Pro™ GAS				REPLACEMENT ORIFICE MODEL	
	IN.	MM	@24 PSI LBS/HR	@42 PSI LBS/HR	SOFT SOLDER		SILVER BRAZE		SOFT SOLDER		SILVER BRAZE			
			IN.	MM.	IN.	MM	IN.	MM	IN.	MM				
T-2	5/16	8.0	.14	.17	1/8 - 1/4	3 - 10	1/16 - 1/4	1 - 6	1/8 - 1/2	3 - 12	1/8 - 1/4	3 - 10	OR-A2	0386-1000
T-3	7/16	11.1	.20	.25	1/4 - 1	6 - 25	1/8 - 1/2	3 - 10	1/4 - 1 1/2	10 - 40	1/4 - 1/2	6 - 15	OR-T3	0386-1021
T-4	1/2	12.7	.39	.48	1/4 - 1 1/2	10 - 40	1/4 - 3/4	6 - 15	1/4 - 2 1/2	10 - 60	1/4 - 1 1/4	6 - 35	OR-A3	0386-1001
T-5	3/4	19.0	1.10	1.3	1 1/2 - 2 1/2	25 - 60	1/2 - 1 1/4	15 - 35	1 - 4	25 - 100	1/2 - 2	15 - 50	OR-A8	0386-1003



**T-2**  
0386-0150



**T-3**  
0386-0151



**T-4**  
0386-0152



**T-5**  
0386-0153

**U.S. Customer Care: 800-238-0282 / FAX 800-535-0557 • Canada Customer Care: 905-827-4515 / FAX 800-588-1714**  
**International Customer Care: 905-827-9777 / FAX 905-827-9797 • www.turbotorch.com**



**WORLD HEADQUARTERS: 16052 Swingley Ridge Road, Suite 300 • St. Louis, Missouri 63017 U.S.A.**

**A Global Cutting & Welding Market Leader™**

**THE AMERICAS**

Denton, TX USA  
U.S. Customer Care  
Ph: (1) 800-426-1888  
Fax: (1) 800-535-0557  
  
Miami, FL USA  
Sales Office, Latin America  
Ph: (1) 954-727-8371  
Fax: (1) 954-727-8376

Oakville, Ontario, Canada  
Canada Customer Care  
Ph: (1) 905-827-4515  
Fax: (1) 800-588-1714  
International Customer Care  
Ph: (1) 905-827-9777  
Fax: (1) 905-827-9777

**EUROPE**

Chorley, United Kingdom  
Customer Care  
Ph: (44) 1257-261755  
Fax: (44) 1257-224800  
  
Milan, Italy  
Customer Care  
Ph: (39) 0236546801  
Fax: (39) 0236546840

**ASIA/PACIFIC**

Cikarang, Indonesia  
Customer Care  
Ph: 62 21+ 8983-0011 / 0012  
Fax: 62 21+ 893-6067  
  
Osaka, Japan  
Sales Office  
Ph: 816-4809-8411  
Fax: 816-4809-8412

Melbourne, Australia  
Australia Customer Care:  
Ph: 1300-654-674  
Fax: 613+ 9474-7391  
International:  
Ph: 613+ 9474-7508  
Fax: 613+ 9474-7488

Rawang, Malaysia  
Customer Care  
Ph: 603+ 6092-2988  
Fax: 603+ 6092-1085

Shanghai, China  
Sales Office  
Ph: 86 21+ 6280-1273  
Fax: 86 21+ 3226-0955

Singapore  
Sales Office  
Ph: 65+ 6832-8066  
Fax: 65+ 6763-5812