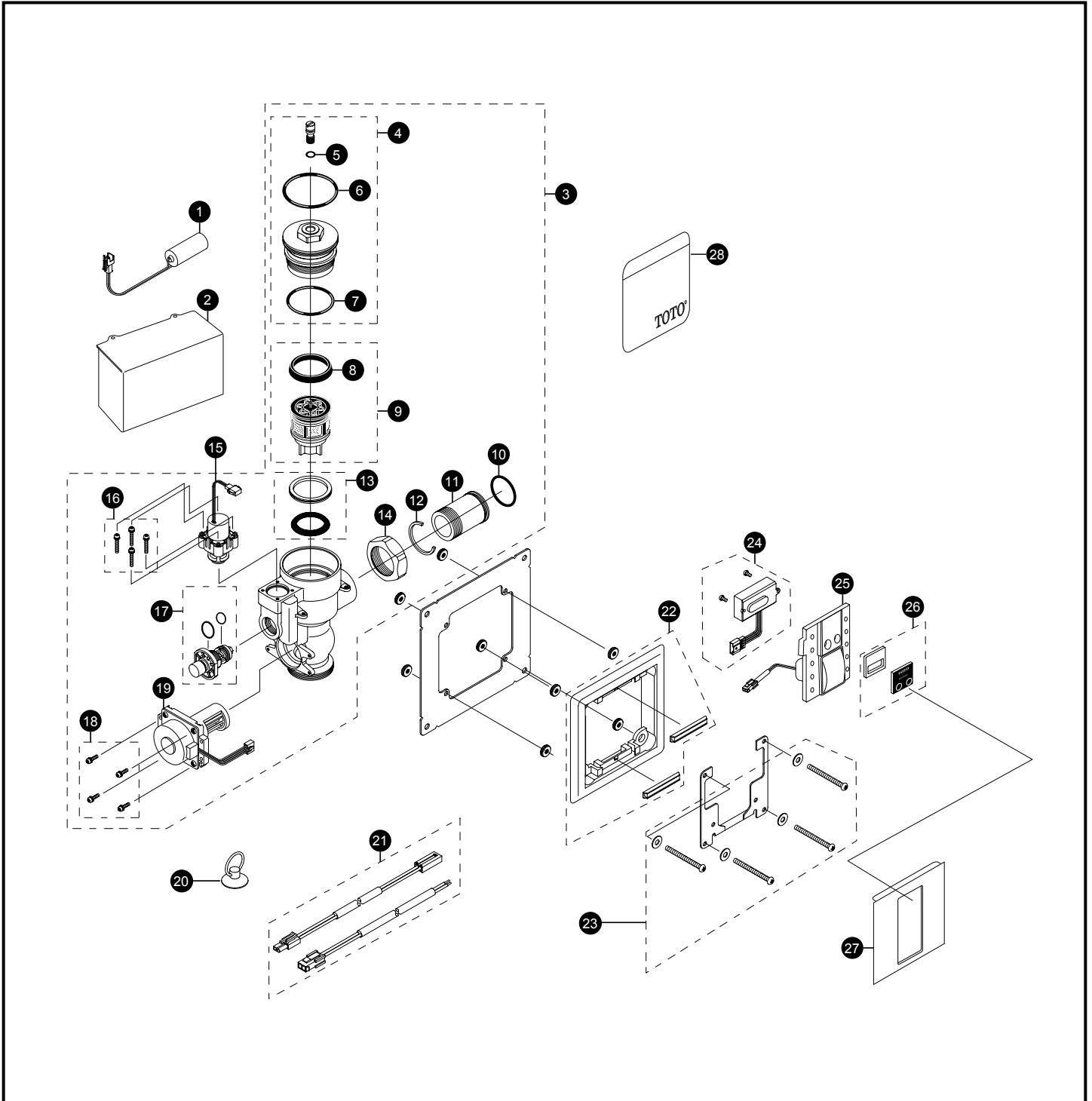


TET3LN#SS Series

TET3LN31#SS
TET3LN32#SS
TET3LN33#SS
TET3LN#SS

EcoPower® Sensor High Efficiency Toilet Flush Valve Concealed (4" x 4") - 1.28 Gpf Hydro-Power Charge



TET3LN#SS Series

TET3LN31#SS
 TET3LN32#SS
 TET3LN33#SS
 TET3LN#SS

EcoPower® Sensor High Efficiency Toilet Flush Valve Concealed (4" x 4") - 1.28 Gpf Hydro-Power Charge

Item	Part	Description	Item	Part	Description
1	TH559EDV410R	Back-Up Battery	Vacuum Breaker Sets		
2	TH559EDV548	Toilet Valve Controller	VB13RB-31		Concealed - Back Spud (1-1/2" Outlet)
3	TH559EDV557	HET Valve Body Assembly	VB9RB-32		Concealed - Top Spud (1-1/2" Outlet)
4	TH559EDV507	Valve Cap Assembly (Toilet 1.6/1.28 GPF)	VB13RB-33		Concealed - Back Spud Floor Mount (1-1/2" Outlet)
5	TH305SV111	O-Rings (Cap Screw) (10 Pieces)	Note: For additional information, refer to the individual vacuum breaker parts sheets.		
6	TH305SV120	O-Rings (Valve Cap) (10 Pieces)			
7	TH305SV112	O-Rings (Valve Guide) (10 Pieces)			
8	TH305SV103	U-Packing (For Piston) (10 Pieces)			
9	TH323V103R	Piston Assembly (1.6/1.28 GPF)			
10	TH305SV106	O-Rings (Tail Piece) (10 Pieces)			
11	TH305SV114	Tail Piece			
12	TH305SV105	Locking Rings (10 Pieces)			
13	TH321	Seal Washer Kit			
14	TH305SV113	Nut			
15	TH559EDV510	Solenoid Unit & Diaphragm Assy			
16	TH559EDV301	Double Sems Screws M3 (4 Pieces)			
17	TH559EDV558	Manual Flushing Button			
18	TH559EDV505	Double Sems Screws M3 (4 Pieces)			
19	TH559EDV503	Hydro-Power Generator (Toilet)			
20	TH559EDV346	Suction Tool Set			
21	TH559EDV556	Extension Wire Set			
22	TH559EDV347	Surface Mounting Frame			
23	TH559EDV350	Adjusting Screw Set			
24	TH559EDV550	Sensor Controller & Screws Set			
25	TH559EDV552	Touch Button Assembly Unit			
26	TH559EDV553	Cover Glass			
27	TH559EDV555	4" x 4" Front Panel			
28	0EU3020	1.28 Water Saving Sticker			

Product Number Explanations

Flush Valve

(T) Fitting
 (E) Electronic
 (T) Toilet 1.28
 (3) Concealed 4"x4" Plate
 (G) Dynamo (Hydro Generator)
 (N) Neutral Rough-In
 (31) 1-1/2" Outlet_Back Spud
 (32) 1-1/2" Outlet_Top Spud
 (33) 1-1/2" Outlet_Back Spud Floor Mount
 (#SS) Stainless Finish