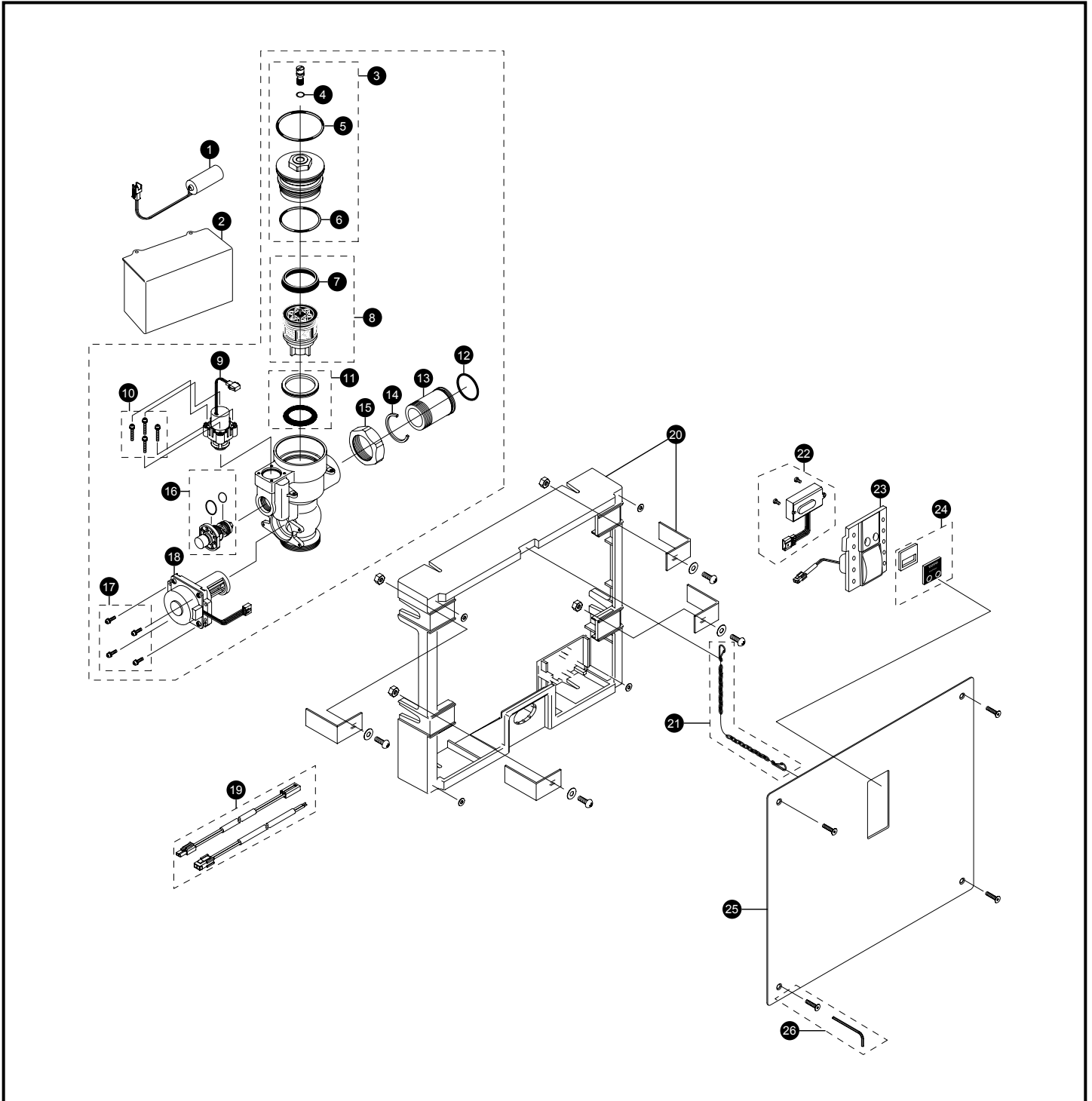


TET2GN#SS Series

TET2GN31#SS
TET2GN32#SS
TET2GN33#SS
TET2GN#SS

EcoPower® Sensor Toilet Flush Valve Concealed (14" x 12") - 1.6 Gpf Hydro-Power Charge



TET2GN#SS Series

TET2GN31#SS
 TET2GN32#SS
 TET2GN33#SS
 TET2GN#SS

EcoPower® Sensor Toilet Flush Valve Concealed (14" x 12") - 1.6 Gpf Hydro-Power Charge

Item	Part	Description	Item	Part	Description
1	TH559EDV410R	Back-Up Battery	Vacuum Breaker Sets		
2	TH559EDV548	Toilet Valve Controller	VB13RB-31		Concealed - Back Spud (1-1/2" Outlet)
3	TH559EDV507	Valve Cap Assy (Toilet 1.6/1.28 GPF)	VB9RB-32		Concealed - Top Spud (1-1/2" Outlet)
4	TH305SV111	O-Rings (Cap Screw) (10 Pieces)	VB13RB-33		Concealed - Back Spud Floor Mount (1-1/2" Outlet)
5	TH305SV120	O-Rings (Valve Cap) (10 Pieces)	Note: For additional information, refer to the individual vacuum breaker parts sheets.		
6	TH305SV112	O-Rings (Valve Guide) (10 Pieces)			
7	TH305SV103	U-Packing (For Piston) (10 Pieces)			
8	TH323V103R	Piston Assembly (1.6/1.28 GPF)			
9	TH559EDV510	Solenoid Unit & Diaphragm Assembly			
10	TH559EDV301	Double Sems Screws M3 (4 pieces)			
11	TH321	Seal Washer Kit			
12	TH305SV106	O-Rings (Tail Piece) (10 Pieces)			
13	TH305SV114	Tail Piece			
14	TH305SV105	Locking Rings (10 Pieces)			
15	TH305SV113	Nut			
16	TH559EDV558	Manual Flushing Button			
17	TH559EDV505	Double Sems Screws M3 (4 pieces)			
18	TH559EDV503	Hydro-Power Generator (Toilet)			
19	TH559EDV556	Extension Wire Set			
20	TH559EDV341	Wall Frame			
21	TH559EDV345	Chain Set			
22	TH559EDV550	Sensor Controller & Screws Set			
23	TH559EDV552	Touch Button Assembly Unit			
24	TH559EDV553	Cover Glass			
25	TH559EDV554	Big Cover Plate			
26	8HU5019	4 Vandal Resist Screws With Wrench			

Product Number Explanations

Flush Valve

(T) Fitting
 (E) Electronic
 (T) Toilet 1.6
 (2) Concealed Large Plate
 (G) Dynamo (Hydro Generator)
 (N) Neutral Rough-In
 (31) 1-1/2" Outlet_Back Spud
 (32) 1-1/2" Outlet_Top Spud
 (33) 1-1/2" Outlet_Back Spud Floor Mount
 (#SS) Stainless Finish