



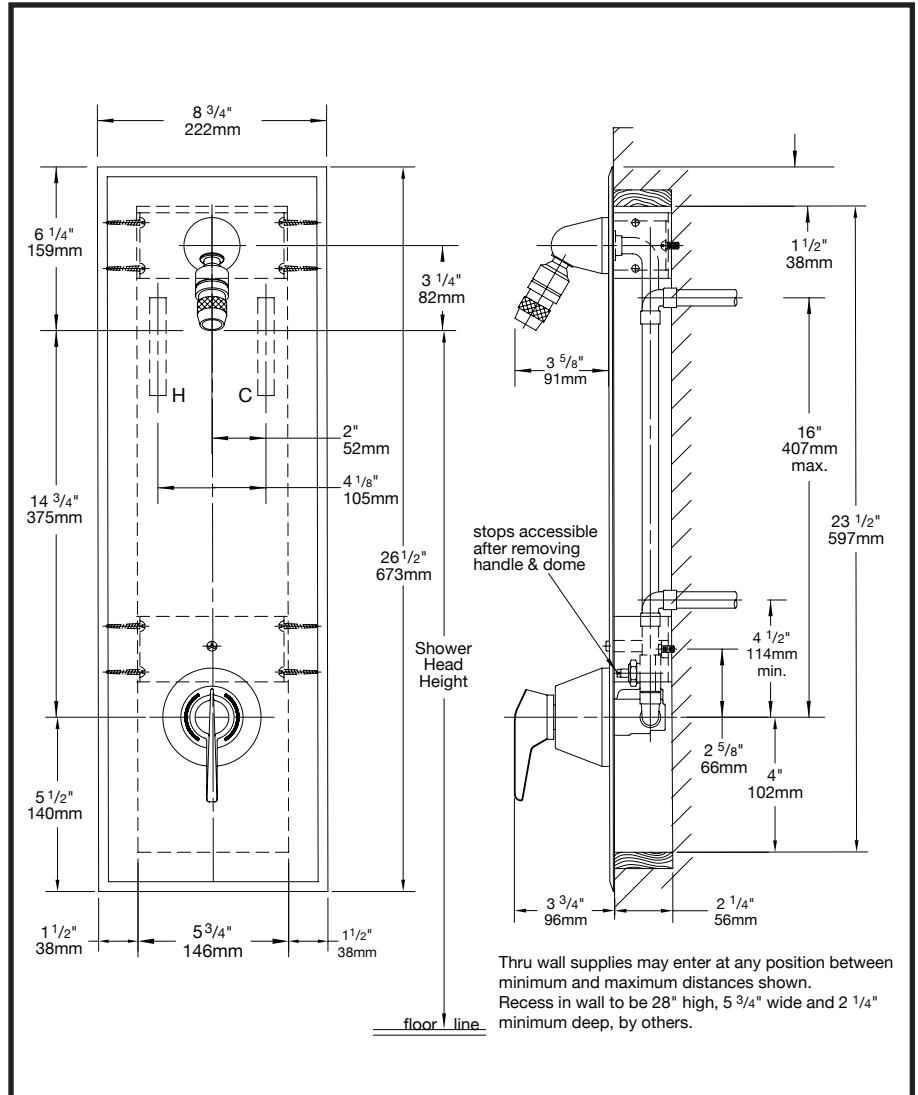
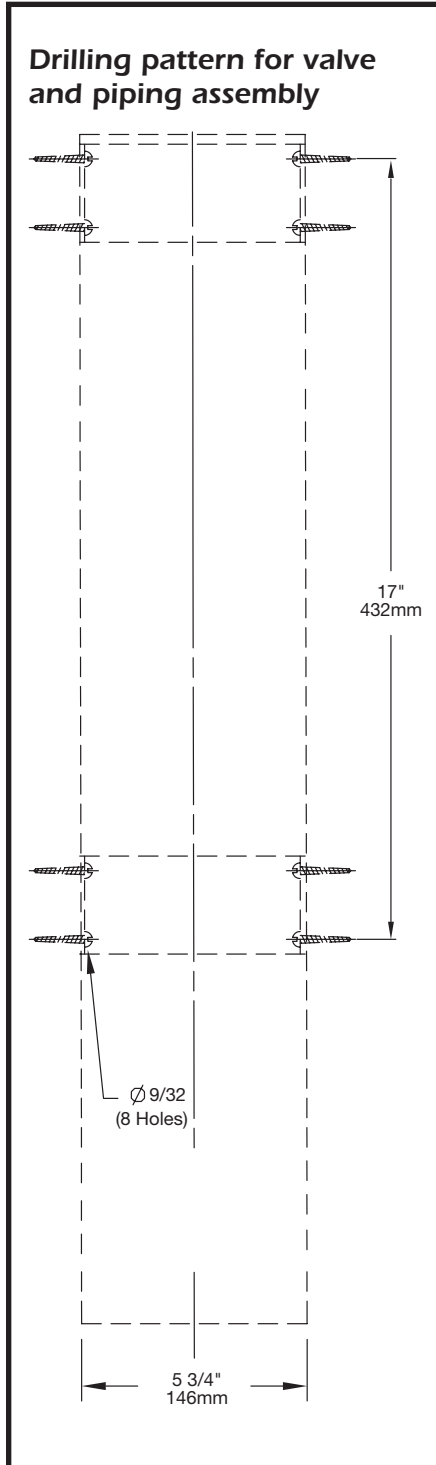
SYMMONS® Hydapipe®

1-911 & 1-912 Series

INSTALLATION INSTRUCTIONS

Product meets ANSI A112.18.1M

Flow rate: 2.5 gpm (9.5 L/min)



Recommended head heights

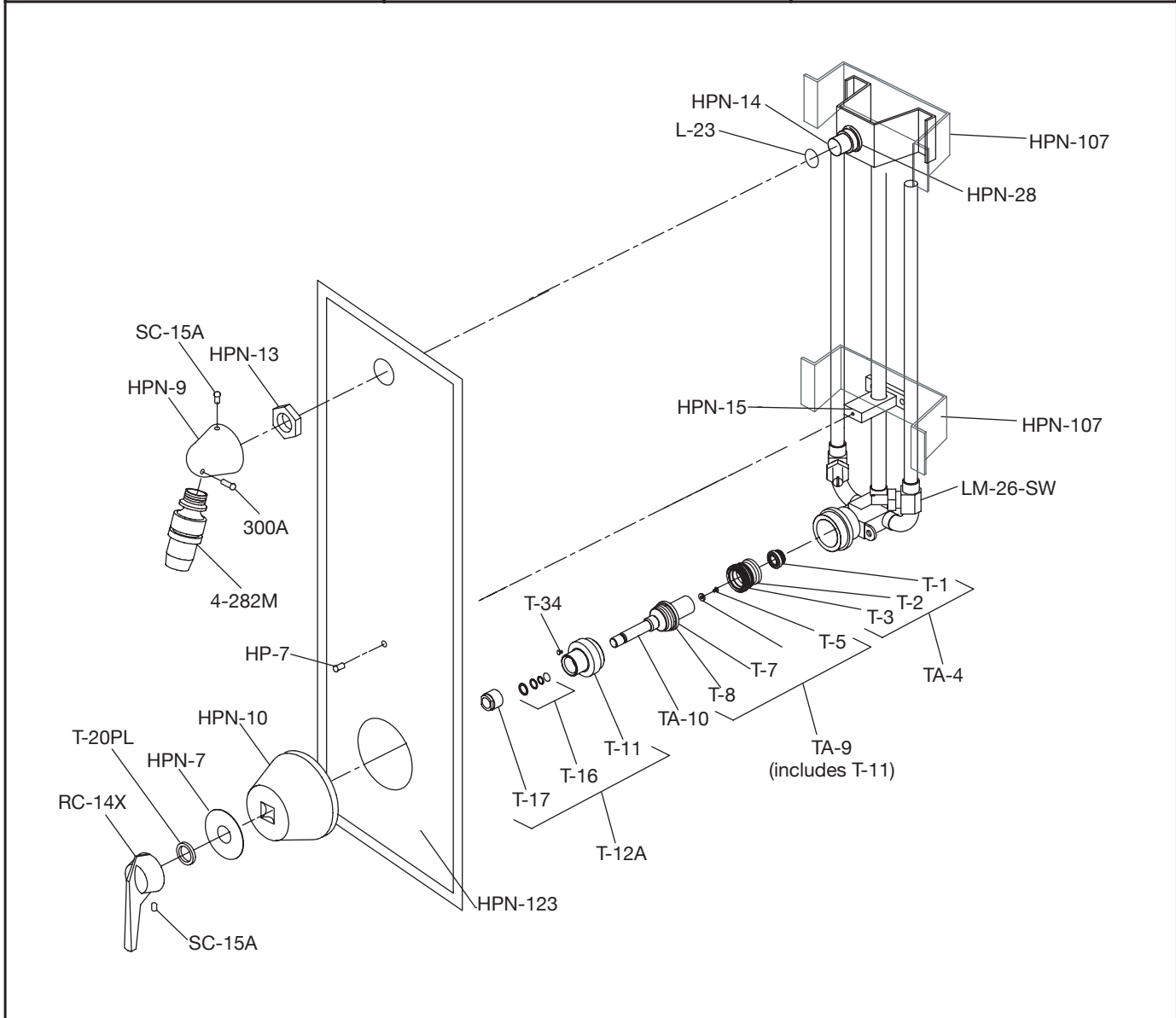
Men	_____	6'4"
Boys, Senior High	_____	6'0"
Boys, Junior High	_____	5'7"
Boys, Elementary	_____	5'4"
Women	_____	6'0"
Girls, Senior High	_____	5'8"
Girls, Junior High	_____	5'5"
Girls, Elementary	_____	4'2"

INSTALLATION:

1. With special screwdriver provided remove screw located on shield above valve, remove head bracket with hex socket key, remove large locking nut, remove valve handle with hex socket key, remove dome and nameplate with locking ring. Remove unit cover.
2. You will have to frame in the opening per the drawing dimensions
3. Mount valve and piping assembly to frame with screws and anchors provided. Connect supply piping.
4. Replace unit cover and reassemble in reverse order.
5. Install shower head.

INDIVIDUAL PARTS		INDIVIDUAL PARTS		COMPOSITE PARTS	
HP-7	Screw	T-1	Hot renewable seat	TA-4	Hot seat (T-1)
HPN-7	Nameplate	T-2	Cold seat o-ring		Cold seat (T-3)
HPN-9	Shower head bracket	T-3	Cold renewable seat		Cold seat O-ring (T-2)
HPN-10	Dome cover	T-5	Hot washer screw	TA-9	Hot washer screw (T-5)
HPN-11	Head mounting bracket	T-6	Hot washer		Hot washer (T-6),
HPN-13	Mounting bracket nut	T-7	Cold washer retainer		Cold water retainer (T-7)
HPN-14	Head bracket stud	T-8	Cold washer		Cold washer (T-8),
HPN-15	Pipe and shield bracket	TA-10	Flow control spindle		Cap gasket (T-11)
HPN-28	Locking nut	T-11	Cap gasket	TA-10	Spindle assembly
HPN-107	Recessed wall bracket	T-12A	Cap assembly		
HPN-123	Unit cover	T-16	Packing, o-ring and washer		
L-23	O-ring	T-17	Packing nut		
LM-26 SW	Service stop complete	T-20PL	Dome lock nut		
RC-14X	Handle	T-34	Limit stop with o-ring		
SC-15A	Set screw	300A	Set screw		
		4-282M	Fre-Flo shower head		

Tools required for installation:
 Slotted screwdriver, Phillips screwdriver, soldering equipment, adjustable wrench, channel lock pliers, hex socket keys (1/8" and 3/32"), electric drill with 1/4" drill bit, HY-50 screwdriver (provided)



Symmons Industries, Inc. ■ 31 Brooks Drive ■ Braintree, MA 02184
 (800) 796-6667, (781) 848-2250 ■ Fax (800) 961-9621, (781) 843-3849
 Website: www.symmons.com ■ Email: customerservice@symmons.com

©2007, 2008 Symmons Industries, Inc. Printed in U.S.A. ■ ZV-484 ■ 050208

