

► **Code Number**

3018110

► **Description**

Concealed Water Closet Flushometer, for Stainless Steel Combination Fixtures. For use with: Acorn® Bradley® Metcraft® (Series 3000) Willoughby® and similar fixtures.

► **Flush Cycle**

1.6 gpf/6.0Lpf

► **Specifications**

Quiet, Concealed, Rough Brass Closet Flushometer for either left or right hand supply with the following features:

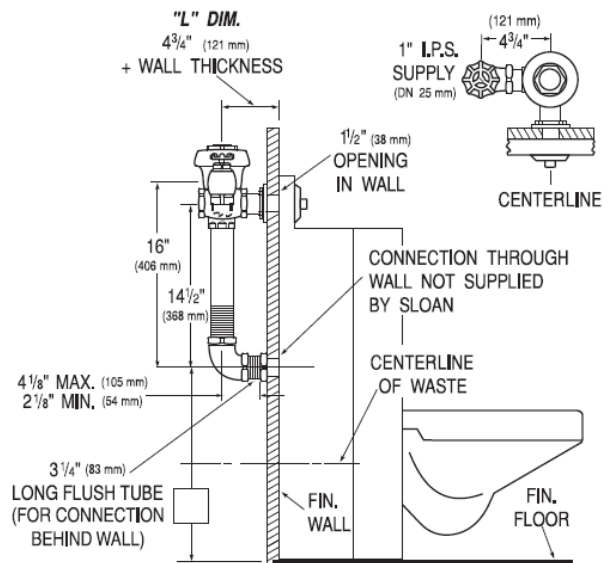
- PERMEX® Synthetic Rubber Diaphragm with Dual Filtered Fixed Bypass
- Metal Direct Acting, Non-Hold-Open Push Button with a Triple Seal Handle Packing
- Vacuum Breaker
- Chrome Plated Exposed Flushometer Parts
- Non-Hold-Open Handle, Fixed Metering Bypass and No External Volume Adjustment to Ensure Water Conservation
- Flush accuracy controlled by CID® technology

Valve Body, Cover, Tailpiece and Control Stop shall be in conformance with ASTM Alloy Classification for Red Brass. Valve shall be in compliance to the applicable sections of ASSE 1037 and ANSI/ASME 112.19.2.

- 1" I.P.S. Wheel Handle Bak-Chek® Angle Stop
- Diaphragm, Stop Seat and Vacuum Breaker to be molded from PERMEX® rubber compound for Chloramine resistance
- Elbow Flush Connection and Coupling for 1/2" NPT Back Inlet (for connection in the pipe chase — flush connection through the wall not provided by Sloan)

► **L Dimension**

Specify the "L" Dimension for the proper length of the flush connection. The "L" Dimension is equal to the Wall Thickness (to nearest whole inch) plus 4-3/4".



► **Compliance & Certifications**



**Made In The  
USA**

This space for Architect/Engineer Approval