



ENGINEERING EXCELLENCE

Cabrillo Series #3CB100

PARTS BREAKDOWN SHEET

DESCRIPTION

- Two Handle Lavatory Faucet
- Metal Handles
- 4-1/8" Reach, 3-3/4" from Deck to Aerator
- Ceramic Disc Cartridges
- 3-Hole 4" Installation
- Brass Pop-Up Drain Assembly

FINISHES

- PC PVD Polished Chrome
- BN PVD Brushed Nickel
- SS PVD Stainless Steel
- PN PVD Polished Nickel



#3CB100 SHOWN * ADA 

STANDARDS APPLICABLE

- ASME A112.18.1
- ANSI A117.1
- ANSI / NSF 61, SECTION 9
- CUPC / IAPMO LISTED / ADA COMPLIANT
- CONTAINS NO MORE THAN 0.25% WEIGHTED AVERAGE LEAD CONTENT

FLOW

- Aerator Limited to 1.5 GPM

Model #: _____

Specific Features: _____

Project Name: _____

Submitted For: _____

Model	Description	Finishes	
#3CB100	Two Handle Lavatory Faucet	<input type="checkbox"/> PC	<input type="checkbox"/> Other__
#3CB101	Two Handle Lavatory Faucet-Less Pop-Up Drain	<input type="checkbox"/> PC	<input type="checkbox"/> Other__



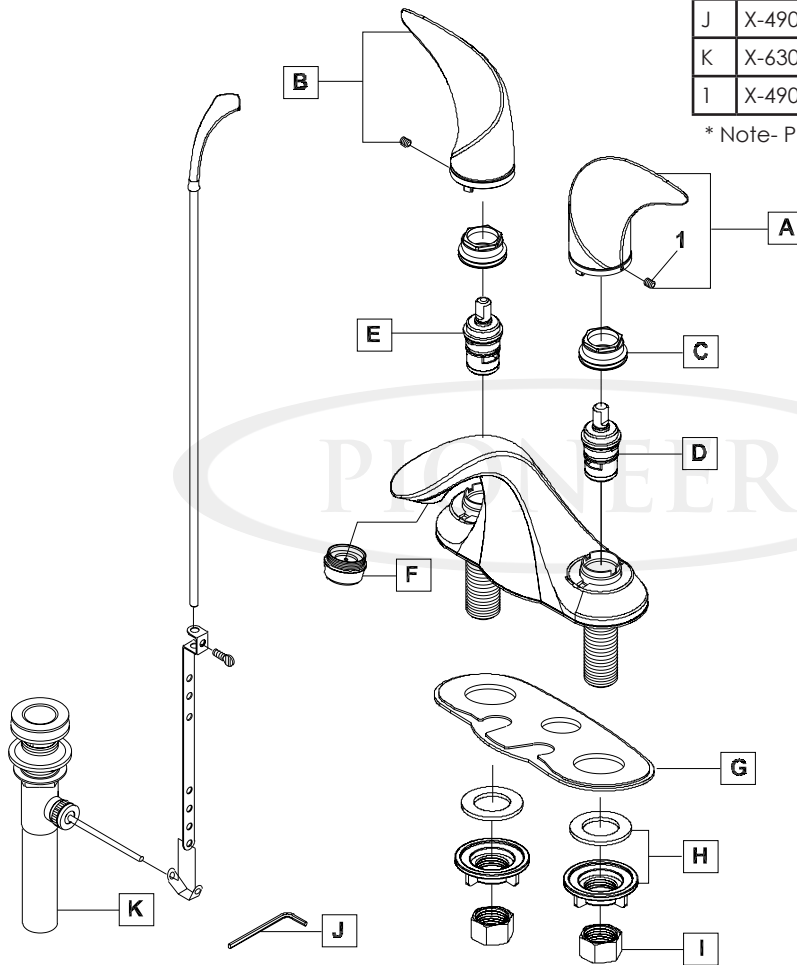
ENGINEERING EXCELLENCE

Pioneer: 1-800-338-9468
 Commerce, CA 90040
 www.pioneerind.com
 Pioneer Industries, Inc. © 2013

DMPB3CB100/REV. 12 2012
 Page 1 of 2

	ITEM#	DESCRIPTION
A	X-1300008C*	Cabrillo Lavatory Handle-Cold
B	X-1300008H*	Cabrillo Lavatory Handle-Hot
C	X-4300049	Bonnet Nut
D	X-3900002C	Ceramic Stem - Cold
E	X-3900002H	Ceramic Stem - Hot
F	X-4900079*	1.5 GPM Aerator
G	X-4300050	Base Gasket
H	X-4900008	Mounting Kit
I	X-4900004	Supply Nut
J	X-4900075	1/16" Allen Wrench
K	X-6300013*	Brass Pop-Up Drain Assembly
1	X-4900076	1/16" Allen Screw

* Note- Please specify finish/color code while ordering.



Product Diagram



ENGINEERING EXCELLENCE

Pioneer: 1-800-338-9468
 Commerce, CA 90040
 www.pioneerind.com
 Pioneer Industries, Inc. © 2009