



ENGINEERING EXCELLENCE

Installation Guide

Single Handle Kitchen Faucet:

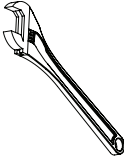



- 2LG160
- 2LG161
- 2LG170
- 2LG162
- 2LG171
- 2LG160B
- 2LG161B
- 2LG172
- 2LG170B
- 2LG160H
- 2LG161H

This product meets the following standards:

- ASME A112.18.1
- ANSI A117.1
- ANSI / NSF 61, SECTION 9
- CUPC / IAPMO LISTED / ADA COMPLIANT
- CONTAINS NO MORE THAN 0.25% WEIGHTED AVERAGE LEAD CONTENT

Thank you for purchasing this Pioneer quality product.

Tools Required

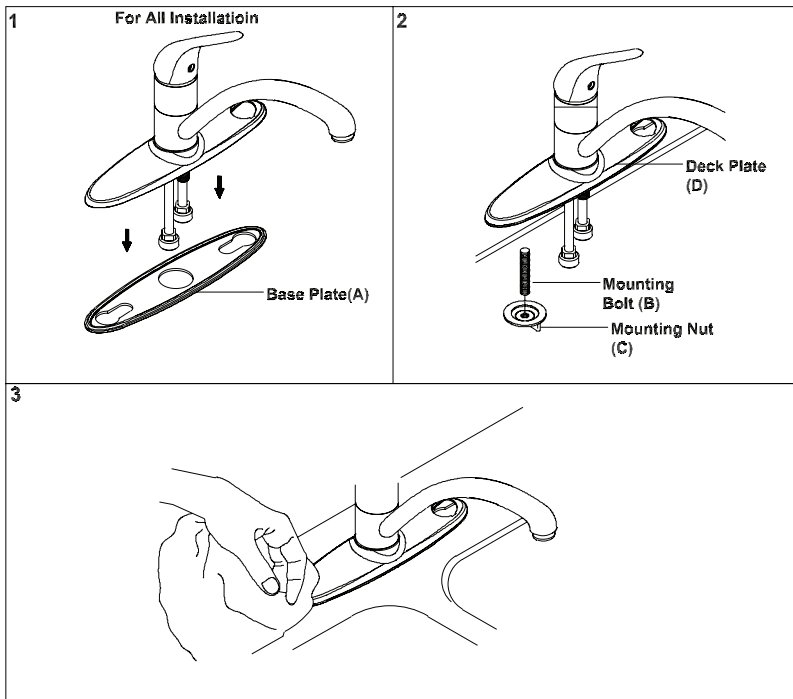
				
Adjustable Wrench	Teflon Tape	Rags	3/32" Allen Wrench	

Prior to Installation

- Observe all local plumbing and building codes before you begin installation.
- Carefully shut off both hot and cold water supplies from under the sink.
- Plug the sink drain with a soft cloth to prevent intrusion of debris or the loss of any faucet parts.
- For replacement installations, carefully remove the existing faucet and clean the entire surface of the sink mounting holes.
- Pioneer reserves the right to make changes in the design of faucets without notice as specified in the pricebook.

Faucet Installation

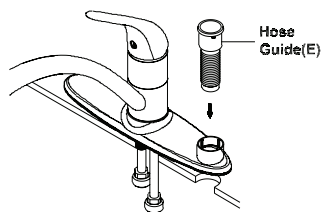
1. Slide the base plate (A) to the underside of the faucet. Apply adequate plumbers putty or sealant along the boundary of the base plate (A).
2. Thread the mounting bolt (B) to the deck plate (D) from underside. Clean the mounting surface. If necessary, insert the faucet through sink hole. Thread the mounting nut (C) from underside. Secure the faucet to the sink with mounting nut (C) supplied with the faucet. For 2LG162 & 2LG172 only install the mounting bolt (B) and mounting Nut (C) on left side. For all the other ensure the mounting bolt (B) and mounting nut (C) are installed on both side.
3. Remove the excess plumbers putty or sealant from the faucet.



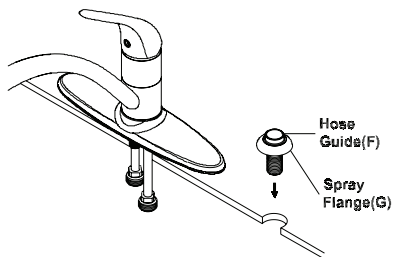
Side Spray Installation

4. For side spray on deck slide the hose guide (E) through the deck plate hole.
5. For separate side spray place the spray flange (G) underneath of the hose guide (F). Then insert the hose guide (F) through the sink hole. Apply adequate plumbers putty or sealant along the boundary of the side spray flange (G).
6. Hand tighten the locknut (H) from underside of the sink.
7. Insert the side spray and hose (I) through the hose guide (E or F). Place the Teflon tape or sealant tape on the side spray port if necessary. Thread the hose (I) to the side spray port (J). Do not overtighten.

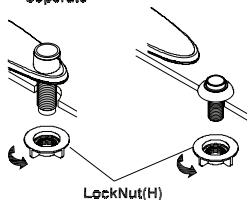
4 For Side Spray On Deck



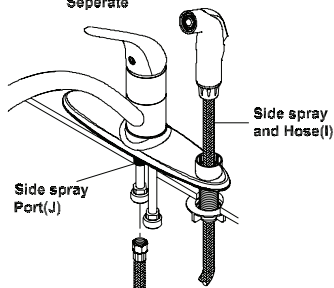
5 For Seperate Side Spray



6 For Side Spray On Deck Or Seperate

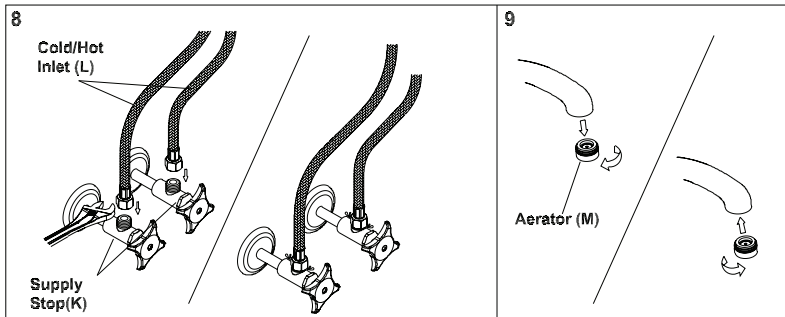


7 For Side Spray On Deck Or Seperate



Main Supply Connection

8. Connect the faucet inlet tubes to inlet supply lines (L). Connect the supply stops (K) to the inlet supply lines (L) (left is hot water supply and right is cold water supply). Make sure inlet supply lines (L) are securely tighten. Do not over-tighten. Turn on water. Check for any leaks. Make sure all the connections are secure.
9. Remove aerator (M). Open the handle. Flush and allow water to run at full flow for at least one minute. Replace aerator (M).

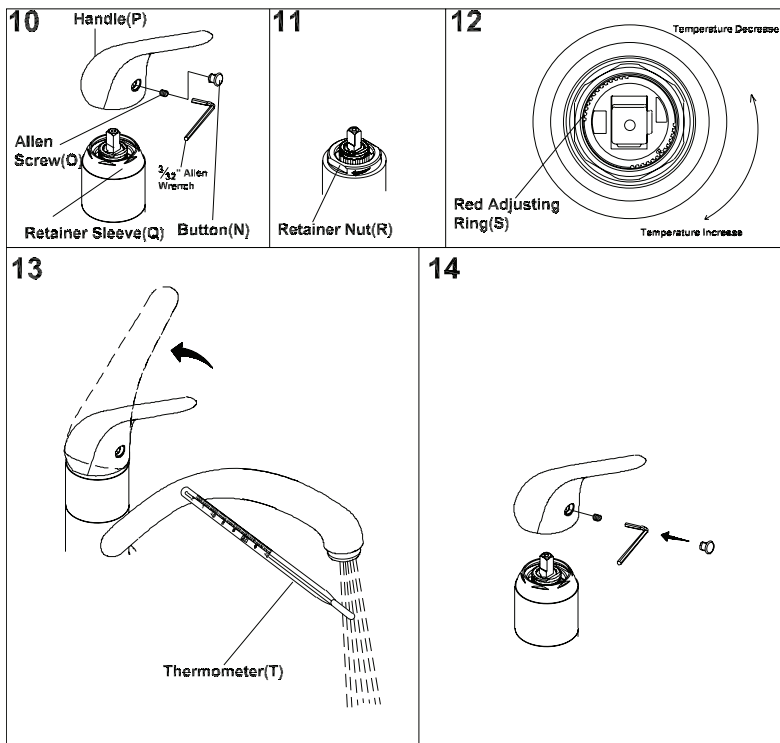


To Set or Adjust Temperature Limit Stop

Caution: Ceramic Cartridge is preset at the factory at maximum temperature. Adjust as necessary. Please see the instructions below:

10. Turn off water and relieve the pressure. Remove handle (P) by removing button (N) and loosening Allen screw (O) and lift off the handle (P).
11. Unscrew retainer sleeve (Q) and retaining nut (R) counter clockwise.
12. Use two fingers raise the red adjustment ring (S). Turn adjustment ring (S) counterclockwise to decrease the temperature setting and clockwise to increase the temperature. Replace.
- 13 & 14. Reassemble and test until desired safe temperature is reached. (Note: Ensure proper alignment of cartridge with notch in valve body.)

To Set or Adjust Temperature Limit Stop



For more care information or trouble shooting inquiries about your Pioneer Product, please see the contact information on the back page.



ENGINEERING EXCELLENCE

3325 S. Garfield Ave. | Commerce, CA 90040
Telephone: (800) 338-9468 | (323) 888-8873 | Fax: (323) 888-9515
Hours: M - F, 7:30am to 5:00pm PST
www.pioneerind.com