

# Tubing Tools

MARS SERIES **650 & 790**



## Reamers, Swaging Tools, Wrenches & Tube Adapters

Imperial inner/outer reamers and deburring tools ream both inside and outside edges of tube with three hollow ground tool steel cutters. Fits comfortably in hand. MARS #65066, inner/outer reamer and deburring tool is used for copper, aluminum and brass tubing and has a blue finish.

Swaging tools are to be used on soft copper, aluminum and brass tubing. Our punch-type swaging tools make tubing connections without the use of fittings. Simply enlarge end of tube, insert another tube and solder like a sweat fitting. MARS #65069 swaging punch tool is for 1/2" OD tubing. The swaging punch kit, MARS #65070, contains four swaging punches - 1/4", 3/8", 1/2" and 5/8" OD. Packaged in vinyl case.

Imperial's tube adapter is used for charging and testing. To connect a hermetic system, pinch-off tube is cut off and adapter is slipped over cut end of tube and tightened. Synthetic rubber seal of adapter grips outside of tube. This gives a 1/4" male flare connection to system for purging, charging or testing. After system is recharged, tube is pinched off next to adapter. Adapter is then removed and tube is cut off and sealed with solder. Adapter can be used repeatedly.

MARS #65082 is a combination wrench with the four sizes most needed for servicing air conditioning units. MARS #65083 is for use on compressors with access valves in hard to reach places. This reversible ratchet is chrome plated.

MARS NO.	MFG. NO.	DESCRIPTION	CASE QTY.
65066	208F	Inner/outer reamer and deburring tool	10
65069	94S	1/2", 5/8", 7/8" OD swaging punch tool	1
65070	193S	swaging punch kit	20
65085	93S03	3/16" OD swaging punch	20
65086	93S04	1/4" OD swaging punch	1
65089	93S05	5/16" OD swaging punch	1
65093	93S12	3/4" OD swaging punch	1
65094	93S14	7/8" OD swaging punch	1
65051	241F04	Tube adapter 1/4" O.D.	1
65082	124C	9/16" and 1/2" hex; 3/16" & 1/4" sq. ratchet	1
65083	127C	1/4", 3/8", 3/16", 5/16" square ratchet	1

## SURE CUT Ratchet Tubing Cutter

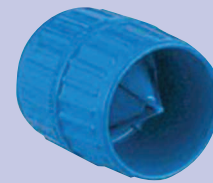
- Cuts copper, brass, aluminum tubing and thin-wall conduit
- Ratchets for fast, easy cuts in tight areas
- Self feeding action for automatic cutting
- Strong, lightweight nylon & fiberglass handle
- Spare cutting wheel is supplied in the handle

MARS NO.	DESCRIPTION	MARS PACK	CASE QTY.
65201	5/16" to 1 1/8" OD	1	12
65202	1/4" to 7/8" OD	1	12
65203	Replacement Blades	1	12

## EASY BEND Ratcheting Tubing Bender

- For bending OD tubing sizes from 3/8" to 7/8"
- Use on soft copper, coated soft copper, thin wall hydraulic tubing and plastic coated aluminum composite pipe
- Kit includes impact resistant carry case, tubing cutter and ID/OD reamer
- Single-hand manual ratchet operation

MARS NO.	DESCRIPTION	MARS PACK	CASE QTY.
65210	Tubing Bender	1	3



65066



65070



65069



65051



65082



65083



65201



65210