

1013-1012 Maverick™ 1.0

Round Front, Vitreous China, Two-Piece Toilet



Features

- Uses 38% less water than conventional toilets
- High efficiency 1.0 gpf / 3.8 lpf low water consumption
- Round front bowl
- HET 3" flush valve
- Pilot operated anti-siphon fill valve
- 12" rough-in
- Chrome-plated, metal push button actuator
- 2-1/8" glazed trapway
- The Mansfield® limited lifetime warranty
- Available in White only






Round Front



Model 1013-1012
Toilet seat not included

Components




| Model # | Description | Codes/Standards |
|-----------|--|---|
| 1013-1012 | Round front, two-piece toilet. Includes top metal push button actuator. Less toilet seat and supply. |    |
| 1013 | Round front toilet bowl only. | |
| 1012 | Tank and cover only, with top metal push button actuator. Less supply. | |

1013-1012 Maverick™ 1.0

Round Front, Vitreous China, Two-Piece Toilet

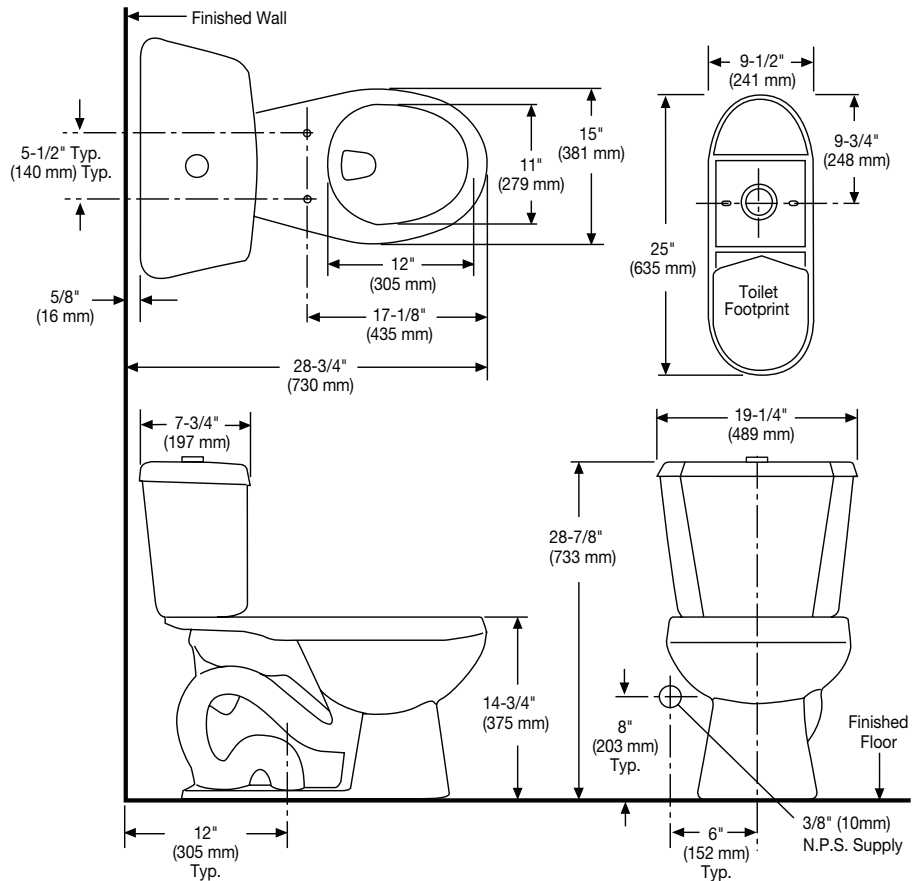


Specifications

| Model # | Description | Codes/Standards |
|-----------|--|---|
| 1013-1012 | Round front (1.0 gpf/3.8 lpf) two-piece toilet |    |

| Specification | Description | Specification | Description |
|----------------------|-------------------|-----------------|---|
| Material | Vitreous China | Trap Diameter | 2-1/8" |
| Water Pressure Range | 20 to 80 PSI | Trap Seal | 3-1/8" |
| Flush System | 3" Flush Valve | Rough-in | 12" |
| Water Usage | 1.0 gpf / 3.8 lpf | Shipping Weight | Model 1013 - 58 lbs. (26 kg) |
| Water Surface Area | 7-3/4" X 10-3/4" | | Model 1012 - 34 lbs. (15 kg) |
| MaP Rating | 500 grams | Warranty | Vitreous China - Limited Lifetime Tank Trim - Limited One Year |

Technical Information



See our complete line of acrylic and vitreous china bathroom fixtures, plastic tank trim and plumbing products.

These dimensions are nominal and subject to change without notice.

Fixture performance and specifications meet or exceed ASME A112.19.2-2008/CSA B45.1-08 standards, and other state and local codes.