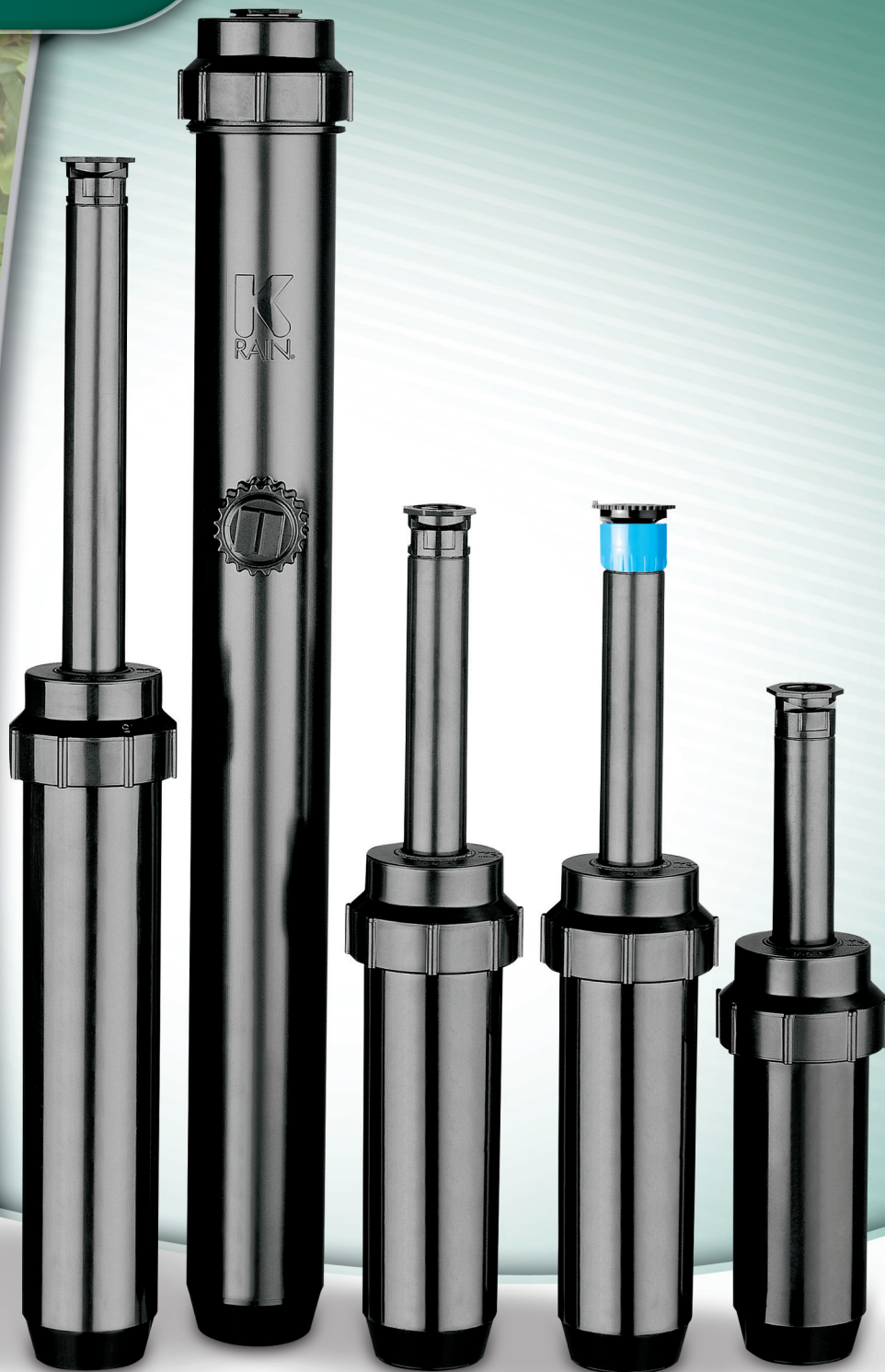


K-SPRAYS



Ideal for watering smaller areas, ground cover and shrub areas.

- ▶ **Available in 3", 4", 6" and 12" Models** – Provides flexibility in system design.
- ▶ **Accepts Male Threaded Nozzles** (Except Model 74001-M).
- ▶ **Stainless Steel Retraction Spring** – Provides reliable retraction of the riser in all soil conditions.
- ▶ **Ratcheting Riser** – Allows for easy pattern alignment by turning the riser.
- ▶ **Heavy Duty Wiper Seal** – Ensures leak free, full pop-up operation even under low-pressure situations.
- ▶ **Optional Purple Cap for Reclaimed Water use** – Highly visible for identification of reclaimed water systems reducing liability.



**IRRIGATION SOLUTIONS
WORLDWIDE™**

K-SPRAYS

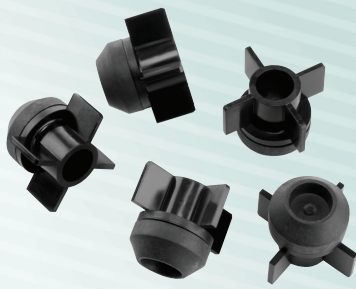


MODELS

- 73001** 3" Pop-Up
- 74001** 4" Pop-Up
- 74001-M** 4" Pop-Up w/Male Thread Riser – Accepts Female Threaded Nozzles
- 76001** 6" Pop-Up
- 71201** 12" Pop-Up

OTHER OPTIONS: ADD TO PART NUMBER

-RCW Reclaimed Water Use / Purple Cap



SPRAY HEAD CHECK VALVES

PART # 53426 (OPTIONAL)



SHRUB ADAPTER

PART # PSA

HOW TO SPECIFY

73001

Model Number

SPECIFICATIONS

- ▶ Pressure Rating: 20 - 50 PSI
- ▶ Flow Range: .5 - 4.6 GPM
- ▶ Precipitation Rate: .4 - 1.91 in./hr
- ▶ Inlet: 1/2" NPT Female Thread

K-RAIN VARIABLE ARC NOZZLES

PERFORMANCE SPECIFICATIONS FOR KV & KVf NOZZLES

ARC	PRESSURE (PSI)	8' GREEN		10' BLUE		12' BROWN		15' BLACK		17' GRAY-KV ONLY	
		RADIUS (FT)	FLOW (GPM)	RADIUS (FT)	FLOW (GPM)	RADIUS (FT)	FLOW (GPM)	RADIUS (FT)	FLOW (GPM)	RADIUS (FT)	FLOW (GPM)
45	20	9	0.5	12	0.5	12	0.8	16	0.9	19	1.2
	30	10	0.8	13	0.8	14	0.9	17	1.1	19	1.3
	40	10	1.0	13	1.0	14	1.1	18	1.3	20	1.4
	50	11	1.1	14	1.1	15	1.2	19	1.4	20	1.6
90	20	9	0.7	12	0.7	12	1.1	15	1.3	18	1.7
	30	9	1.1	12	1.1	13	1.3	17	1.6	18	1.8
	40	10	1.4	13	1.4	14	1.5	18	1.8	19	2.0
	50	11	1.5	14	1.5	15	1.7	19	2.0	20	2.2
120	20	8	1.1	11	1.1	11	1.4	14	1.7	17	1.8
	30	9	1.4	12	1.4	12	1.6	16	2.1	18	2.2
	40	10	1.7	13	1.7	13	2.0	17	2.3	19	2.3
	50	10	1.9	13	1.9	14	2.2	18	2.6	19	2.6
180	20	8	1.4	11	1.4	11	1.6	14	1.8	17	1.9
	30	8	1.6	11	1.6	12	1.8	15	2.3	18	2.4
	40	9	1.8	12	1.8	13	2.2	16	2.6	19	2.6
	50	10	2.0	13	2.0	14	2.4	18	2.8	19	2.9
240	20	8	1.3	10	1.3	11	1.8	14	2.4	16	2.5
	30	8	1.9	11	1.9	12	2.3	15	2.9	17	3.1
	40	9	2.2	12	2.2	13	2.4	16	3.2	18	3.2
	50	9	2.5	12	2.5	13	2.9	17	3.7	18	3.6
270	20	8	1.7	10	1.7	11	1.9	14	2.7	16	2.9
	30	8	2.0	10	2.0	12	2.4	15	3.2	17	3.4
	40	8	2.3	11	2.3	12	2.6	16	3.6	18	4.0
	50	9	2.6	12	2.6	13	3.0	16	4.0	18	4.5
360	20	8	2.2	10	2.2	11	2.8	13	3.4	15	3.5
	30	8	2.7	10	2.7	12	3.1	15	4.2	17	4.4
	40	8	3.0	11	3.0	12	3.5	15	4.7	17	4.9
	50	8	3.5	12	3.5	13	3.9	16	5.3	18	5.4

METRIC

ARC	PRESSURE		8' GREEN		10' BLUE		12' BROWN		15' BLACK		17' GRAY-KV ONLY	
	KPA	BARS	RADIUS (M)	FLOW (L/M)	RADIUS (M)	FLOW (L/M)	RADIUS (M)	FLOW (L/M)	RADIUS (M)	FLOW (L/M)	RADIUS (M)	FLOW (L/M)
45	138	1.38	2.7	1.9	3.7	1.9	3.7	3.0	4.9	3.4	5.8	4.5
	207	2.07	3.0	3.0	4.0	3.0	4.3	3.4	5.2	4.2	5.8	4.9
	276	2.76	3.0	3.8	4.0	3.8	4.3	4.2	5.5	4.9	6.1	5.3
	345	3.45	3.4	4.2	4.3	4.2	4.6	4.5	5.8	5.3	6.1	6.1
90	138	1.38	2.7	2.6	3.7	2.6	3.7	4.2	4.6	4.9	3.7	2.6
	207	2.07	2.7	4.2	3.7	4.0	4.0	4.9	5.2	6.1	5.5	6.8
	276	2.76	3.0	5.3	4.0	5.3	4.3	5.7	5.5	6.8	5.8	7.6
	345	3.45	3.4	5.7	4.3	5.7	4.6	6.4	5.8	7.6	6.1	8.3
120	138	1.38	2.4	4.2	3.4	4.2	3.4	5.3	4.3	6.4	5.2	6.8
	207	2.07	2.7	5.3	3.7	5.3	3.7	6.1	4.9	7.9	5.5	8.3
	276	2.76	3.0	6.4	4.0	6.4	4.0	7.6	5.2	8.7	5.8	8.7
	345	3.45	3.0	7.2	4.0	7.2	4.3	8.3	5.5	9.8	6.1	9.8
180	138	1.38	2.4	5.3	3.4	5.3	3.4	6.1	4.3	6.8	5.2	7.2
	207	2.07	2.4	6.1	3.4	6.1	3.7	6.8	4.6	8.7	5.5	9.1
	276	2.76	2.7	6.8	3.7	6.8	4.0	8.3	4.9	9.8	5.8	9.8
	345	3.45	3.0	7.6	4.0	7.6	4.3	9.1	5.5	10.6	5.8	11.0
240	138	1.38	2.4	4.9	3.0	4.9	3.4	6.8	4.3	9.1	4.9	9.5
	207	2.07	2.4	7.2	3.4	7.2	3.7	8.7	4.6	11.0	5.2	11.7
	276	2.76	2.7	8.3	3.7	8.3	4.0	9.1	4.9	12.1	5.5	12.1
	345	3.45	2.7	9.5	3.7	9.5	4.0	11.0	5.2	14.0	5.5	13.6
270	138	1.38	2.4	6.4	3.0	6.4	3.4	7.2	4.3	10.2	4.9	11.0
	207	2.07	2.4	7.6	3.0	7.6	3.7	9.1	4.6	12.1	5.2	12.9
	276	2.76	2.4	8.7	3.4	8.7	3.7	9.8	4.9	13.6	5.5	15.1
	345	3.45	2.7	9.8	3.7	9.8	4.0	11.4	4.9	15.1	5.5	17.0
360	138	1.38	2.4	8.3	3.0	8.3	3.4	10.6	4.0	12.9	4.6	13.2
	207	2.07	2.4	10.2	3.0	10.2	3.7	11.7	4.6	15.9	5.2	16.7
	276	2.76	2.4	11.4	3.4	11.4	3.7	13.2	4.6	17.8	5.2	18.5
	345	3.45	2.4	13.2	3.7	13.2	4.0	14.8	4.9	20.1	5.5	20.4



K-Rain Manufacturing Corp.

1640 Australian Avenue
Riviera Beach, FL 33404 USA
+1 561 844-1002

FAX: +1 561 842-9493

1.800.735.7246 | www.krain.com