

COMMERCIAL WEIGHT WITHOUT THE INSTITUTIONAL LOOK



Sleek contour design
for a contemporary look

- Injection molded durable polypropylene plastic with UV protection
- EZ Close™ feature replaces the need for self-sustaining
- Four built-in bumpers for stability
- Non-skid rubberized pads to minimize movement and potential for seat loosening
- Molded in bumpers
- Matching adjustable hinge
- Corrosion proof POM nuts, bolts and washers
- Stainless steel pintels for durability
- Top mount design for ease of installation and maintenance

a perfect
fit for the
imperfect
bowl



Elongated Closed Front
with Cover

- Position bolt in front, center or back hole
- Three (3) lockdown positions



- Accepts steel (C200HPM) and 304 stainless (C200HPSS) hardware

HEAVY DUTY EZ CLOSE™

Contemporary Design Plastic Commercial Toilet Seats

Model No. C8019S-00

Elongated Plastic Closed Front with Cover
Commercial Seat

Available January 2013:

Model No. C8019-OS-00

Elongated Plastic Open Front with Cover Commercial Seat

00865-01

comfort™ seats
a Jones Stephens Brand

Seat shall be Comfort[™] Seats

Model Number C8019S Closed Front with Cover

C8019-OS Open Front with Cover

(Available January 2013)

Heavy Duty Commercial Toilet Seat

Elongated Closed Front with Cover

Category

LIGHT COMMERCIAL & RESIDENTIAL

Features

- Injection molded durable polypropylene plastic with UV protection
- EZ Close[™] feature replaces the need for self-sustaining
- Four built-in bumpers for stability
- Non-skid rubberized pads to minimize movement and potential for seat loosening
- Molded in bumpers
- Matching adjustable hinge
- Corrosion proof POM nuts, bolts and washers
- Stainless steel pintels for durability
- Top mount design for ease of installation and maintenance
- Accepts steel (C200HPM) and 304 stainless (C200HPSS) hardware

Seat Color/Finish

Specify white

Hinge Color/Finish

Specify white

Product Specifications

Hinge Design: Color-matched hinge containing stainless steel pintels

Ring Thickness: 7/8"

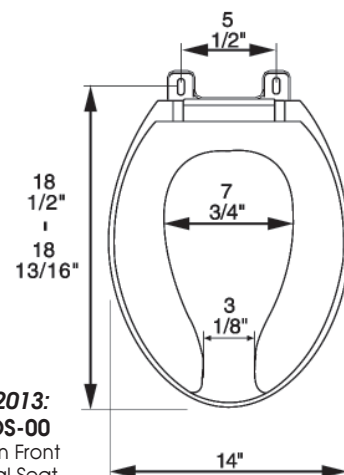
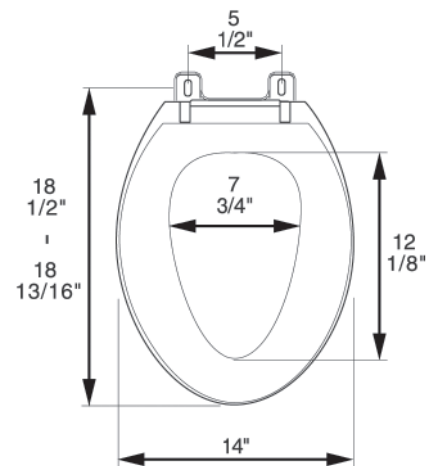
Ring Thickness with Bumper: 1"

Height of Seat with Cover: 2 3/4"

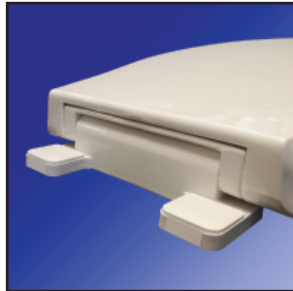
Size: ANSI Standard Toilet - Meets Z124.5 Section 5.1.2

Additional Information

Stainless Steel (Model #C200-HPSS) or Metal (Model #C200-HPM) installation hardware for commercial/hospitality installations. All seats feature UV protection.



Corrosion proof, self-aligning hardware



Factory-installed "living" hinge covers

Available January 2013:
Model No. C8019-OS-00
Elongated Plastic Open Front
with Cover Commercial Seat