

# electric tankless hot water heater

## Six Module, Commercial/Industrial for Emergency Eye/Face Applications

### EEMAX SERIES SIX MODELS

- Commercial/Industrial
- Capacity 6 to 12 GPM
- Eye/Face Combo “Tepid” Water option (EF)  
**Meets ANSI Z358.1** “Tepid” Water Requirements for Emergency Eye/Face wash range of (65°-90°F)
- Boosters applications to 180°F (S option)



| EX MODEL  | THERMOSTATIC OPTIONS | VOLTS    | kW | AMPS       | TURN-ON (GPM) |
|-----------|----------------------|----------|----|------------|---------------|
| EX360T24T | EF, S, FS            | 208v/3 Ø | 36 | 100A/phase | 1             |
| EX360T6   | EF, S, FS            | 208v/3 Ø | 36 | 100A/phase | 3.5           |
| EX480T24T | EF, S, FS            | 208v/3 Ø | 48 | 133A/phase | 1             |
| EX480T6   | EF, S, FS            | 208v/3 Ø | 48 | 133A/phase | 3.5           |

| ED MODEL     | THERMOSTATIC OPTIONS | VOLTS      | kW | AMPS      | TURN-ON (GPM) |
|--------------|----------------------|------------|----|-----------|---------------|
| ED039480T24T | EF, S, FS            | 480v Delta | 39 | 47A/phase | 1             |
| ED048480T24T | EF, S, FS            | 480v Delta | 48 | 58A/phase | 1             |
| ED054480T24T | EF, S, FS            | 480v Delta | 54 | 65A/phase | 1             |
| ED063480T24T | EF, S, FS            | 480v Delta | 63 | 76A/phase | 1             |



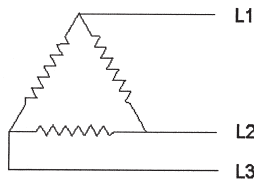
**Eye/Face Wash**

### ELECTRICAL CONFIGURATIONS AND REQUIREMENTS:

All Eemax three phase units are custom made to order and as such, are non-returnable and non-refundable. We urge you, therefore, to check your electrical supply, making sure all criteria for operating your Eemax water heater are met.

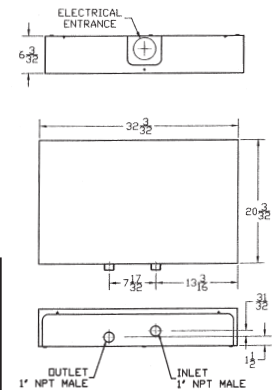
**EEMAX 480v and 208v Three Phase Units Delta Configuration**  
Requires: 3 Lives and 1 Ground (earth)

Three Phase Delta Three-wire



### PRODUCT SPECIFICATIONS:

- Dimensions: 32<sup>3</sup>/<sub>32</sub>" H x 20<sup>3</sup>/<sub>32</sub>" W x 6<sup>3</sup>/<sub>32</sub>" D
- Weight: 42 lbs.
- Cover: Powder Coated Steel
- Color: Yellow
- Element: Six replaceable cartridge elements plus two spares
- Fittings: 1" NPT fittings at BOTTOM of unit
- Pressure: Min. 40psi, Max. 150psi
- UL Listed: E86887(m)
- U.S. PATENT #4.762.980, #4.960.976



### NEMA OPTIONS

- NEMA 4** = Optional waterproof cabinet - hinged cover. Powder coated finish.
- NEMA 4x** = Optional stainless steel waterproof corrosion-resistant cabinet.

### QUALITY FEATURES

- **Cut Energy Waste** – Flow switch activates heater only on demand (no standby heat loss) – 99% efficient.
- **Save Water** – Install at specific location.
- **Continuous Hot Water** – No storage capacity to run out.
- **Factory Set Temperature Available** – Range ambient to 180°F.
- **Capacity to 12 GPM (T6 only), 6 GPM (T24T).**
- **Meets ANSI Z358.1 Tepid Water Requirements.**
- **Reduced Installation Material Cost** – No T&P relief needed (check local codes).
- **Microprocessor Control** – Ensures accurate output temperatures, standard temp of 140°F.
- **Reduces Calcification, Liming and Sedimentation.**
- **Field Serviceable Element** – Replaceable cartridge element (1 year warranty).
- **Warranty** – Heaters are warrantied against failure due to leaks of “Heater Body/Element Assembly” for a period of FIVE YEARS. One year on parts.

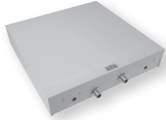


353 Christian Street, Oxford, CT 06478  
(800) 543-6163 info@eemaxinc.com  
**eemax.com**



\* The wetted surface of this product contacted by water contains less than 0.25% lead and meets California and Vermont Lead Free laws.

*SERIES Six*



|  | VOLTAGE  | POWER (KW) | AMPS | RECOMMENDED WIRE SIZE | TURN-ON (GPM) | PHASE | NPT FITTING | # HEATING MODULES | TEMPERATURE RISE IN GPM (F) |     |     |     |     |      |      |
|--|----------|------------|------|-----------------------|---------------|-------|-------------|-------------------|-----------------------------|-----|-----|-----|-----|------|------|
|  |          |            |      |                       |               |       |             |                   | 4.0                         | 5.0 | 6.0 | 7.5 | 8.0 | 10.0 | 12.0 |
| <b>SIX MODULE, THREE PHASE MODELS – 208v DELTA</b> |          |            |      |                       |               |       |             |                   |                             |     |     |     |     |      |      |
| EX360T24T  | 208v/3 Ø | 36         | 100A | 1 AWG                 | 1             | Three | 1"          | 6                 | 61°                         | 49° | 41° | -   | -   | -    | -    |
| EX360T24T EF                                       | 208v/3 Ø | 36         | 100A | 1 AWG                 | 1             | Three | 1"          | 6                 | 61°                         | 49° | 41° | -   | -   | -    | -    |
| EX360T24T S  | 208v/3 Ø | 36         | 100A | 1 AWG                 | 1             | Three | 1"          | 6                 | 61°                         | 49° | 41° | -   | -   | -    | -    |
| EX360T24T FS                                       | 208v/3 Ø | 36         | 100A | 1 AWG                 | 1             | Three | 1"          | 6                 | 61°                         | 49° | 41° | -   | -   | -    | -    |
| EX360T6  | 208v/3 Ø | 36         | 100A | 1 AWG                 | 3.5           | Three | 1"          | 6                 | 61°                         | 49° | 41° | 32° | 30° | 24°  | 20°  |
| EX360T6 EF   | 208v/3 Ø | 36         | 100A | 1 AWG                 | 3.5           | Three | 1"          | 6                 | 61°                         | 49° | 41° | 32° | 30° | 24°  | 20°  |
| EX360T6 S  | 208v/3 Ø | 36         | 100A | 1 AWG                 | 3.5           | Three | 1"          | 6                 | 61°                         | 49° | 41° | 32° | 30° | 24°  | 20°  |
| EX360T6 FS   | 208v/3 Ø | 36         | 100A | 1 AWG                 | 3.5           | Three | 1"          | 6                 | 61°                         | 49° | 41° | 32° | 30° | 24°  | 20°  |
| EX480T24T  | 208v/3 Ø | 48         | 133A | 2/0 AWG               | 1             | Three | 1"          | 6                 | 82°                         | 65° | 54° | -   | -   | -    | -    |
| EX480T24T EF                                       | 208v/3 Ø | 48         | 133A | 2/0 AWG               | 1             | Three | 1"          | 6                 | 82°                         | 65° | 54° | -   | -   | -    | -    |
| EX480T24T S  | 208v/3 Ø | 48         | 133A | 2/0 AWG               | 1             | Three | 1"          | 6                 | 82°                         | 65° | 54° | -   | -   | -    | -    |
| EX480T24T FS                                       | 208v/3 Ø | 48         | 133A | 2/0 AWG               | 1             | Three | 1"          | 6                 | 82°                         | 65° | 54° | -   | -   | -    | -    |
| EX480T6  | 208v/3 Ø | 48         | 133A | 2/0 AWG               | 3.5           | Three | 1"          | 6                 | 82°                         | 65° | 54° | 43° | 41° | 32°  | 27°  |
| EX480T6 EF   | 208v/3 Ø | 48         | 133A | 2/0 AWG               | 3.5           | Three | 1"          | 6                 | 82°                         | 65° | 54° | 43° | 41° | 32°  | 27°  |
| EX480T6 S  | 208v/3 Ø | 48         | 133A | 2/0 AWG               | 3.5           | Three | 1"          | 6                 | 82°                         | 65° | 54° | 43° | 41° | 32°  | 27°  |
| EX480T6 FS   | 208v/3 Ø | 48         | 133A | 2/0 AWG               | 3.5           | Three | 1"          | 6                 | 82°                         | 65° | 54° | 43° | 41° | 32°  | 27°  |

|  |            |    |           |       |   |       |    |   |      |     |     |   |   |   |   |
|--|------------|----|-----------|-------|---|-------|----|---|------|-----|-----|---|---|---|---|
| <b>SIX MODULE, THREE PHASE MODELS – 480v DELTA</b> |            |    |           |       |   |       |    |   |      |     |     |   |   |   |   |
| ED039480T24T                                       | 480v Delta | 39 | 47A/phase | 6 AWG | 1 | Three | 1" | 6 | 67°  | 53° | 44° | - | - | - | - |
| ED039480T24T EF                                    | 480v Delta | 39 | 47A/phase | 6 AWG | 1 | Three | 1" | 6 | 67°  | 53° | 44° | - | - | - | - |
| ED039480T24T S                                     | 480v Delta | 39 | 47A/phase | 6 AWG | 1 | Three | 1" | 6 | 67°  | 53° | 44° | - | - | - | - |
| ED039480T24T FS                                    | 480v Delta | 39 | 47A/phase | 6 AWG | 1 | Three | 1" | 6 | 67°  | 53° | 44° | - | - | - | - |
| ED048480T24T                                       | 480v Delta | 48 | 58A/phase | 4 AWG | 1 | Three | 1" | 6 | 82°  | 66° | 55° | - | - | - | - |
| ED048480T24T EF                                    | 480v Delta | 48 | 58A/phase | 4 AWG | 1 | Three | 1" | 6 | 82°  | 66° | 55° | - | - | - | - |
| ED048480T24T S                                     | 480v Delta | 48 | 58A/phase | 4 AWG | 1 | Three | 1" | 6 | 82°  | 66° | 55° | - | - | - | - |
| ED048480T24T FS                                    | 480v Delta | 48 | 58A/phase | 4 AWG | 1 | Three | 1" | 6 | 82°  | 66° | 55° | - | - | - | - |
| ED054480T24T                                       | 480v Delta | 54 | 65A/phase | 4 AWG | 1 | Three | 1" | 6 | 92°  | 74° | 61° | - | - | - | - |
| ED054480T24T EF                                    | 480v Delta | 54 | 65A/phase | 4 AWG | 1 | Three | 1" | 6 | 92°  | 74° | 61° | - | - | - | - |
| ED054480T24T S                                     | 480v Delta | 54 | 65A/phase | 4 AWG | 1 | Three | 1" | 6 | 92°  | 74° | 61° | - | - | - | - |
| ED054480T24T FS                                    | 480v Delta | 54 | 65A/phase | 4 AWG | 1 | Three | 1" | 6 | 92°  | 74° | 61° | - | - | - | - |
| ED063480T24T                                       | 480v Delta | 63 | 76A/phase | 3 AWG | 1 | Three | 1" | 6 | 109° | 86° | 72° | - | - | - | - |
| ED063480T24T EF                                    | 480v Delta | 63 | 76A/phase | 3 AWG | 1 | Three | 1" | 6 | 109° | 86° | 72° | - | - | - | - |
| ED063480T24T S                                     | 480v Delta | 63 | 76A/phase | 3 AWG | 1 | Three | 1" | 6 | 109° | 86° | 72° | - | - | - | - |
| ED063480T24T FS                                    | 480v Delta | 63 | 76A/phase | 3 AWG | 1 | Three | 1" | 6 | 109° | 86° | 72° | - | - | - | - |

**EEMAX SUBMITTAL**

Engineer/Architect: \_\_\_\_\_  
 Job Name/Customer: \_\_\_\_\_  
 Location: \_\_\_\_\_  
 Contractor: \_\_\_\_\_  
 Representative: \_\_\_\_\_  
 HEATER SPECIFICATIONS:  
 Series Six Model # \_\_\_\_\_

| Quantity | kW | Voltage | AMPS | GPM |
|----------|----|---------|------|-----|
|          |    |         |      |     |

**SUFFIX DEFINITION**

- S = Sanitation 180°F
- EF = Tepid water emergency eye/face wash
- FS = Factory Set (Ambient to 180°F)
- T6 = Parallel turns on 3.5 GPM max flow 12 GPM
- T24T = Turns on in stages, first stage 1 GPM, second stage 1.8 GPM, third stage 3.2 GPM, max 6 GPM

**SUGGESTED SPECIFICATION**

Tankless Water Heater shall be an Eemax, \_\_\_\_\_, with \_\_\_\_\_ kW, \_\_\_\_\_ vac, and \_\_\_\_\_ to heat \_\_\_\_\_ GPM @ a temperature rise of \_\_\_\_\_ degrees F.  
 Element shall be replaceable cartridge insert. Element shall be iron free, Nickel Chrome material. Heater shall be fitted with 1" NPT. Heater shall be installed upright with water connections on bottom. Hot water storage tanks prohibited. Unit shall be Eemax or approved equal. NOTE: Refer to rating chart for product information.



353 Christian Street, Oxford, CT 06478  
 (800) 543-6163 info@eemaxinc.com  
**eemax.com**



\* The wetted surface of this product contacted by water contains less than 0.25% lead and meets California and Vermont Lead Free laws.