

CHICAGO FAUCETS
a Geberit company

2100 South Clearwater Drive
Des Plaines, IL 60018
Phone: 847-803-5000
Fax: 847-803-5454
www.chicagofaucets.com

REPAIR PARTS

FITTING NO.

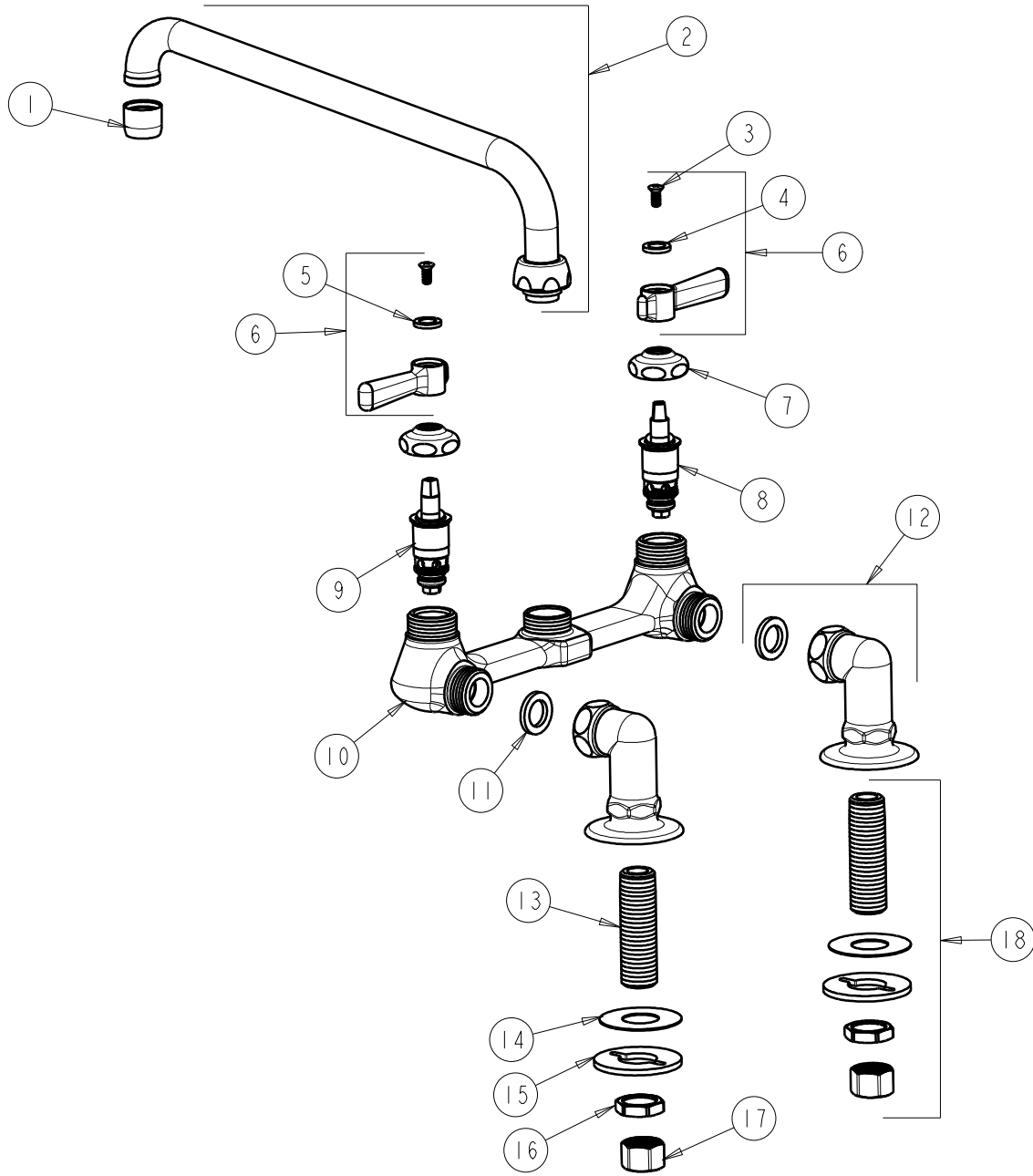
946-L12-369CP

SUBMITTED MODEL NO.

ITEM NO.

FOR TECHNICAL ASSISTANCE
1-800-TEC-TRUE (1-800-832-8783)

BY: SID DATE: 09-28-09
CHK: *[Signature]* REV:



ITEM	PART NO.	DESCRIPTION	ITEM	PART NO.	DESCRIPTION
1	E3JKCP	SOFTFLO AERATOR OUTLET	11	1-011JKNF	WASHER, .97 X .62 X .12
2	L12JKCP	FOR PARTS SEE L12JKCP	12	SSJKCP	ANGLE SHANK ASSEMBLY w/ WASHER
3	420-010JKRCF	SCREW, 10-32 UNC PH 1/2	13	748-002JKRBF	INLET SHANK 1/2-NPSM
4	633-023JKNF	INDEX BUTTON (RED)	14	52-007JKNF	WASHER, RUBBER
5	633-123JKNF	INDEX BUTTON (BLUE)	15	807-112JKNF	WASHER
6	369-PRJKCP	LEVER HANDLE ASSEMBLY (PAIR)	16	49-004JKRBF	LOCKNUT
7	1-214JKCP	CAP	17	49-005JKRBF	COUPLING NUT
8	1-100XTJKNF	QUATURN UNIT (LH)	18	748-002JKRBF	SHANK ASSEMBLY
9	1-099XTJKNF	QUATURN UNIT (RH)			
10	---	VALVE BODY (NOT SOLD SEPARATELY)			