

CHICAGO FAUCETS®

a Geberit company

FOR TECHNICAL ASSISTANCE
1-800-TEC-TRUE (1-800-832-8783)

2100 South Clearwater Drive
Des Plaines, IL 60018
Phone: 847-803-5000
Fax: 847-803-5454
www.chicagofaucets.com

REPAIR PARTS

BY: JAR DATE: 01-19-12
CHK: *[Signature]* REV: 02-28-13

FITTING NO.

SEE SCHEDULE

SUBMITTED MODEL NO.

ITEM NO.

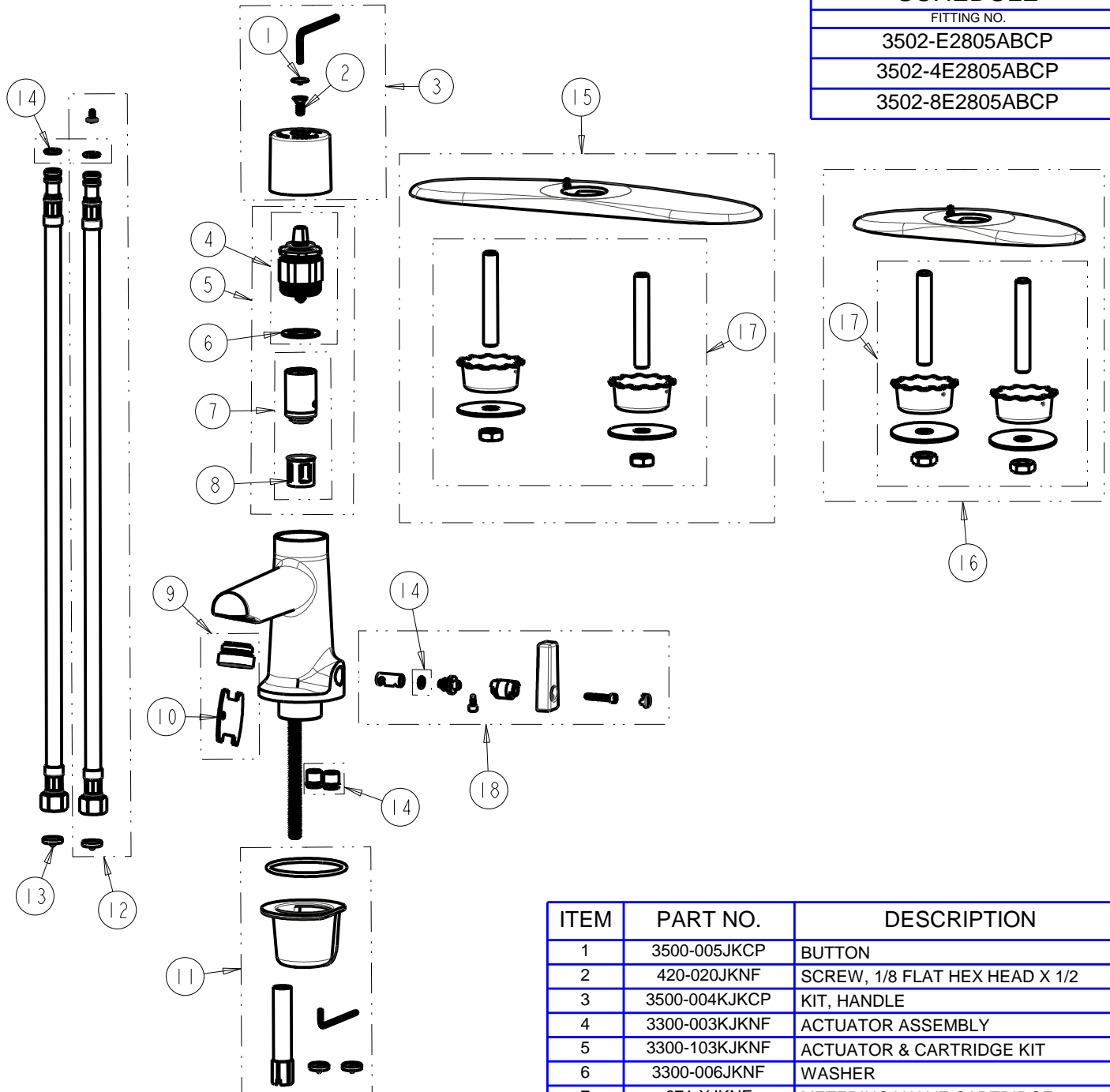
SCHEDULE

FITTING NO.

3502-E2805ABCP

3502-4E2805ABCP

3502-8E2805ABCP



ITEM	PART NO.	DESCRIPTION
1	3500-005JKCP	BUTTON
2	420-020JKNF	SCREW, 1/8 FLAT HEX HEAD X 1/2
3	3500-004KJKCP	KIT, HANDLE
4	3300-003KJKNF	ACTUATOR ASSEMBLY
5	3300-103KJKNF	ACTUATOR & CARTRIDGE KIT
6	3300-006JKNF	WASHER
7	671-XJKNF	METERING VALVE CARTRIDGE
8	667-402JKNF	MVP FILTER
9	E2805JKCP	VP ECONOFLO SPRAY OUTLET w/KEY
10	3-024JKRCF	KEY, VP
11	171-PPJKNF	KIT, DECK MOUNTING HARDWARE
12	240.693.00.1	KIT, SS BRAIDED HOSE (QTY 1)
13	3300-005JKNF	FILTER/SCREEN
14	241.653.00.1	KIT, CHECK VALVES AND O-RINGS
15	3500-002KJKCP	KIT, COVER PLATE 8 IN
16	3500-001KJKCP	KIT, COVER PLATE 4 IN
17	242.872.21.1	KIT, COVER PLATE MOUNTING
18	3500-003KJKNF	KIT, MIXING