

2600CBDWP – EVERYDAY BATHS

inches (mm)

60 x 60 x 21 1/2 (1525 x 1525 x 545) • Fax on Demand #5076

SOAKER MODEL #2600CBD

WHIRLPOOL MODEL #2600CBDWP



FEATURES

- Corner design
- Integral arm rests
- Ergonomic backrest
- Integral tiling flange (2T)
- Integral skirt
- Molded toiletry shelf
- Slip-resistant textured bottom
- Center rear drain
- Gelcoat surface
- 5-year limited warranty

Whirlpool Features:

- .75hp motor
- 4 adjusta-flow whirlpool jets
- Color matched or clear trim
- Pneumatic on/off control
- Advanced safety suction system

OPTIONS

- Removable access panel (whirlpool models)
- In-line heater (whirlpool models)
- Mood light (whirlpool models)
- Designer drain, waste & overflow

AQUATIC ADVANTAGE

- National distribution
- 5 manufacturing facilities
- Private fleet
- Centralized customer service
- Field support
- 24-hour fax-on-demand

COLOR & TRIM OPTIONS

| Stock | Premium |
|---------------------|--------------------|
| Almond (C) | Black (C) |
| Biscuit (C) | Mexican Sand* (NA) |
| Bone (C) | Sand Bar* (NA) |
| Linen (C) | |
| Sterling Silver (C) | |
| White (C) | |

C = color matched trim

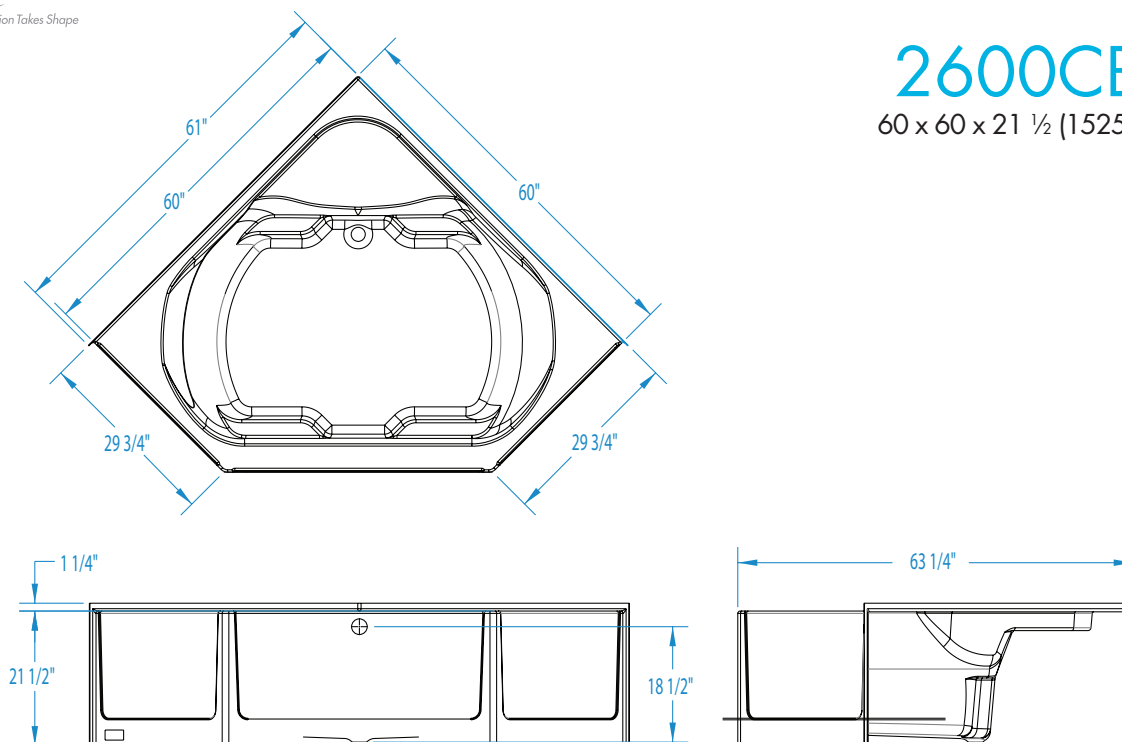
NA = not applicable

* color not available for whirlpool models



2600CBDWP

60 x 60 x 21 1/2 (1525 x 1525 x 545)
inches (mm)



FEATURES lbs (kg) Dimensional Tolerance $\pm \frac{3}{8}$ ". Dimensions needed for site preparation should be measured from the unit. Aquatic assumes no responsibility for preparatory work.

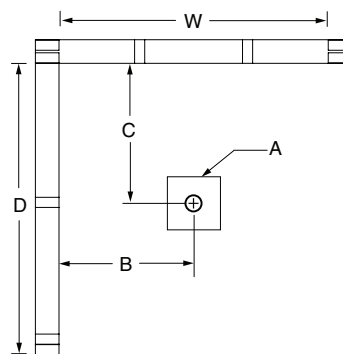
| Model # | Material | Jets | Motor | Controls | Drain | Net Wt. | Pkg. Wt. |
|----------------------|----------|------|---------|-----------|-------------|----------|----------|
| Soaker #2600CBD | Gelcoat | 0 | - | - | Center Rear | 112 (51) | 117 (53) |
| Whirlpool #2600CBDWP | Gelcoat | 4 | 0.75 HP | Pneumatic | Center Rear | 162 (73) | 167 (76) |

DIMENSIONS

| Specifications | inches (mm) |
|---------------------------------|-----------------------------|
| Width: Overall / Net | 61 1/2 (1560) / 60 (1525) |
| Depth: Overall / Net | 28 (710) |
| Height: Overall / Net | 22 3/4 (580) / 21 1/2 (545) |
| Enclosure Opening | - |
| Skirt Height | 21 1/2 (545) |
| Drain Rough-In (from Back Wall) | 18 (460) |
| Drain Rough-In (from Side Wall) | 18 (460) |
| Drain: Diameter / Clearance | 2 (50) / 1/2 (15) |

FRAMING DIMENSIONS inches (mm)

| Type | D Depth | W Width | H Height | A | B | C |
|--------|---------------|---------------|--------------|---------|----------|----------|
| Alcove | 58 1/2 (1485) | 58 1/2 (1485) | 21 1/4 (540) | Box Out | 18 (460) | 18 (460) |



SUMP DATA

| Top of Drain to Bottom of Overflow | Capacity to Overflow gal (ltr) | Min. Operating Capacity gal (ltr) | WIDTH @ centerline | | DEPTH @ centerline | |
|------------------------------------|--------------------------------|-----------------------------------|--------------------|-----------|--------------------|--------------|
| | | | Top | Bottom | Top | Bottom |
| 13 1/4 (335) | 90 (341) | 50 (189) | 62 (1575) | 45 (1145) | 37 1/2 (950) | 34 1/2 (875) |