

# ALANA II – EVERYDAY BATHS

inches (mm)

60 x 42 x 20 ¼ (1525 x 1070 x 515) • Fax on Demand #5061

SOAKER MODEL #2760410

WHIRLPOOL MODEL #2760411



## FEATURES

- Alcove bath
- Integral armrests
- Ergonomic backrest
- Integral tiling flange (3T)
- Integral skirt
- Slip-resistant textured bottom
- Left or right hand drain
- Gelcoat surface
- 5-year limited warranty

### Whirlpool Features:

- .75hp motor
- 4 adjusta-flow whirlpool jets
- Color matched or clear trim
- 1 air control
- Pneumatic on/off control
- Advanced safety suction system

## OPTIONS

- In-line heater (whirlpool models)
- Mood light (whirlpool models)
- Designer drain, waste & overflow

## AQUATIC ADVANTAGE

- National distribution
- 5 manufacturing facilities
- Private fleet
- Centralized customer service
- Field support
- 24-hour fax-on-demand

## COLOR & TRIM OPTIONS

Stock	Premium
Almond (C)	Black (C)
Biscuit (C)	Mexican Sand* (NA)
Bone (C)	Sand Bar* (NA)
Linen (C)	
Sterling Silver (C)	
White (C)	

C = color matched trim

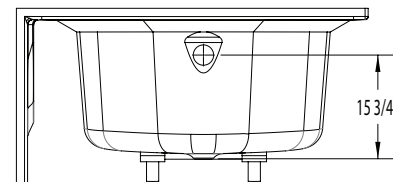
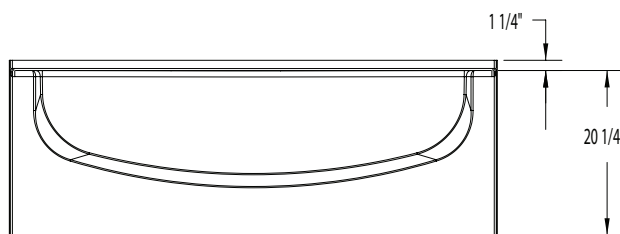
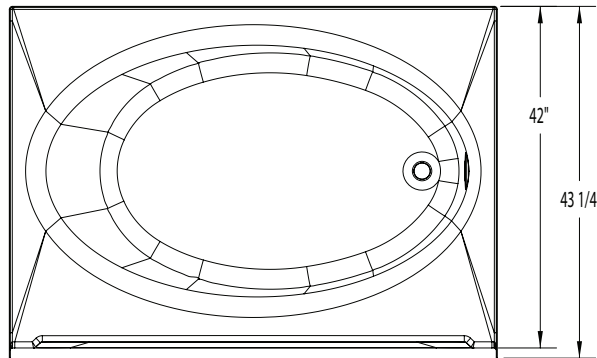
NA = not applicable

\* color not available for whirlpool models



# ALANA II

60 x 42 x 20 1/4 (1525 x 1070 x 515)  
inches (mm)



**FEATURES** lbs (kg) Dimensional Tolerance  $\pm \frac{3}{8}$ ". Dimensions needed for site preparation should be measured from the unit. Aquatic assumes no responsibility for preparatory work.

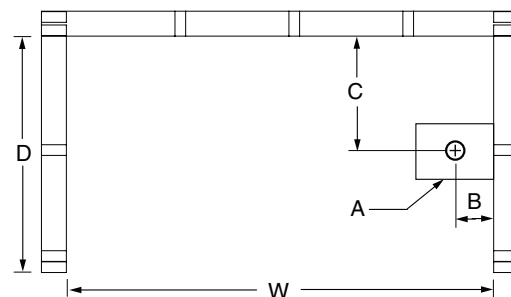
Model #	Material	Jets	Motor	Controls	Drain	Net Wt.	Pkg. Wt.
Soaker #2760410	Gelcoat	0	-	-	LH or RH	80 (36)	85 (39)
Whirlpool #2760411	Gelcoat	4	0.75 HP	Pneumatic	LH or RH	130 (59)	135 (61)

## DIMENSIONS

Specifications	inches (mm)
Width: Overall / Net	60 (1525)
Depth: Overall / Net	43 1/4 (1100) / 42 (1070)
Height: Overall / Net	21 1/2 (545) / 20 1/4 (515)
Enclosure Opening	-
Skirt Height	20 1/4 (515)
Drain Rough-In (from Back Wall)	20 1/4 (515)
Drain Rough-In (from Side Wall)	2 1/2 (65)
Drain: Diameter / Clearance	2 (50) / 3 (75)

## FRAMING DIMENSIONS inches (mm)

Type	D Depth	W Width	H Height	A	B	C
Alcove	43 1/4 (1100)	60 1/8 (1525)	19 3/4 (500)	Box Out	2 1/2 (65)	20 1/4 (515)



## SUMP DATA

Top of Drain to Bottom of Overflow	Capacity to Overflow gal (ltr)	Min. Operating Capacity gal (ltr)	WIDTH @ centerline		DEPTH @ centerline	
			Top	Bottom	Top	Bottom
10 5/8 (270)	55 (208)	50 (189)	52 (1320)	42 (1070)	29 1/2 (750)	27 1/2 (700)